

# CERTIFICATE OF LOCATION OF GOVERNMENT CORNER

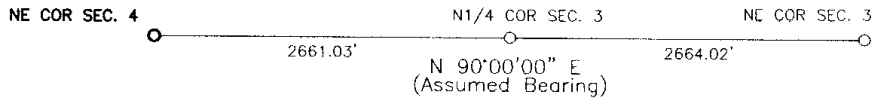
Northeast Corner of Section 4, Township 114, Range 41, 5th P.M.

STATE OF MINNESOTA, County of Yellow Medicine

At the corner location shown on the sketch:

- On Oct. 27, 2003 found a R.R. spike 1 foot down (see back)  
DATE
- left monument as found,  lowered monument,  removed monument (explain)
- On Oct. 28, 2003 placed a 1" iron pipe over R.R. spike  
DATE

### SKETCH OF REFERENCE TIES



Nothing to tie to

Statement of evidence relative to this corner location is on back of page.

I hereby certify that this document and the data contained herein was prepared by me or under my direct supervision.

Lyle C. Mosing 1-28-04  
SIGNATURE DATE

Registration No. 11943

- Land Surveyor,  Professional Engineer
- County Surveyor,  County Engineer

OFFICE OF THE COUNTY RECORDER  
County of \_\_\_\_\_

I hereby certify that this document was filed in the Co. Recorders office at \_\_\_\_\_ M on the \_\_\_\_\_ day of \_\_\_\_\_ A.D. 19 \_\_\_\_\_

County Recorder \_\_\_\_\_

By \_\_\_\_\_, Deputy

DOCUMENT NO. \_\_\_\_\_

Statement of Evidence

On November 8, 1900, John Norguaard, County Surveyor, set a stone at the NE corner of Section 4.

On October 27, 2003, Moseng Land Surveying dug with a backhoe in center of intersection. Found a R.R. spike 1 foot down. Tied out and continued digging and found nothing. There was evidence that the corner had been ug for earlier. Set a 1" iron pipe with seal #11943 at road surface, over the found R.R. spike.

Doc# 236989      Fee: \$.00      2 Pages  
Office of County Recorder, Yellow Medicine County, Minnesota  
I hereby certify that the within instrument was  
filed on January 4, 2005 at 02:00 PM

Kay Zempel, Yellow Medicine County Recorder  
BY Paul Rustik Deputy