

CERTIFICATE OF LOCATION OF GOVERNMENT CORNER

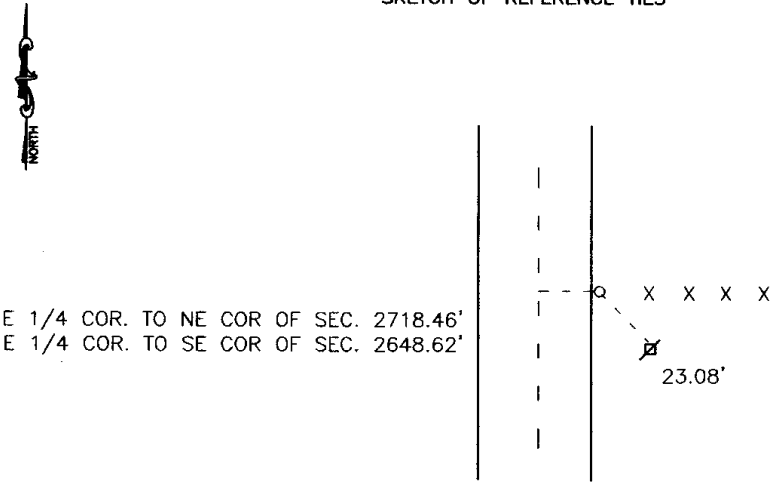
East Quarter _____ Corner of Section 3, Township 113, Range 39, 5th P.M.

STATE OF MINNESOTA, County of Yellow Medicine

At the corner location shown on the sketch:

- On _____ found a _____
- left monument as found, lowered monument, removed monument (explain)
- On 12-26-01 placed a 1" pipe w/seal #11943

SKETCH OF REFERENCE TIES



Nail and Seal powerpole East Southeast 23.08'
To the centerline of the road 10.08'

Statement of evidence relative to this corner location is on back of page.

I hereby certify that this document and the data contained herein was prepared by me or under my direct supervision.

Lyle E. Moring 1-25-05
SIGNATURE DATE
Registration No. 11943

- Land Surveyor, Professional Engineer
- County Surveyor, County Engineer

OFFICE OF THE COUNTY RECORDER
County of _____

I hereby certify that this document was filed in the Co. Recorders office at _____ M on the _____ day of _____ A.D. 19 _____

County Recorder _____
By _____, Deputy

DOCUMENT NO. _____

Statement of Evidence

Original corner set September 3, 1864 by C. Edie Davise, 40 chains from southeast corner. Total mile measured 80.50 chains.

On July 26, 2001 Moseng Land Surveying, tried setting corner by the single proportionate method, but it fell 18 feet north of the existing fence line. We set a 1" pipe with a seal #11943 on line with section corners in line with fence to the East. The corner falls on the shoulder of the road.

Doc# 237125
Fee: \$.00 2 Pages
Office of County Recorder,
Yellow Medicine County, Minnesota
I hereby certify that the within
instrument was filed on
January 25, 2005 at 09:15 AM

Kay Zempel, Yellow Medicine County Recorder
BY Hail Kohlik Deputy