

CERTIFICATE OF LOCATION OF GOVERNMENT CORNER

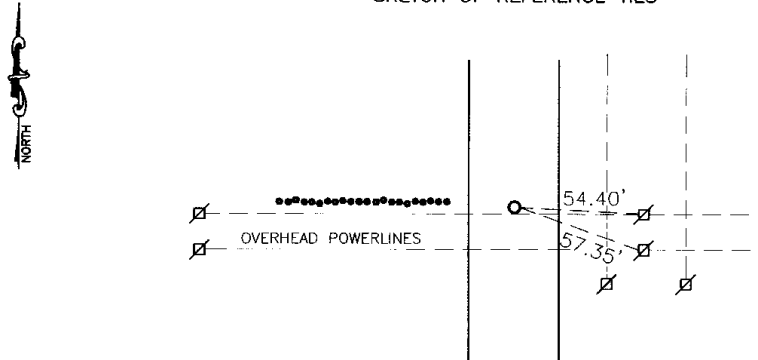
EAST QUARTER Corner of Section 25, Township 115, Range 41, 5th P.M.

STATE OF MINNESOTA, County of YELLOW MEDICINE

At the corner location shown on the sketch:

- On _____ found a _____
DATE
- left monument as found, lowered monument, removed monument (explain)
- On 6-20-2005 placed a 1" PIPE WITH SEAL
DATE

SKETCH OF REFERENCE TIES



Nail and Seal in Power Pole ESE 54.40'
Nail and Seal in Power Pole SE 57.35'

Statement of evidence relative to this corner location is on back of page.

I hereby certify that this document and the data contained herein was prepared by me or under my direct supervision.

Dyle C. Moring 12-16-05
SIGNATURE DATE
Registration No. 11943

- Land Surveyor, Professional Engineer
- County Surveyor, County Engineer

OFFICE OF THE COUNTY RECORDER
County of _____

I hereby certify that this document was filed in the Co. Recorders office at _____ M on the _____ day of _____ A.D. 20 _____

County Recorder _____
By _____, Deputy

DOCUMENT NO. _____

Statement of Evidence

On June 20, 2005 Bueltel-Moseng Land Surveying dug with a backhoe (Jeseritz Construction) and were unable to find marker. Trying to set a marker midway and on line with section corners it fell 50' North of existing line and 6' East of the center line of the road. A 1" pipe with seal was set by occupational lines and centerline of road. The aerial photographs were scaled and showed it also to be 40-50' south of midway.

Nfe Lyle Moseng
703 Lawrence St
Marshall MN
56258

Doc# 239632 Fee: \$0.00 2 Pages

Office of County Recorder
Yellow Medicine County, Minnesota
I hereby certify that the within instrument
was filed on December 20, 2005 at 10:15 AM

Kay Zempel, Yellow Medicine County Recorder

BY Kay Zempel Recorder