

CERTIFICATE OF LOCATION OF GOVERNMENT CORNER

.....SW.....Corner of Section.....13.....Township.....115 N.....Range.....41 W 5th P.M.

STATE OF MINNESOTA, County of YELLOW MEDICINE

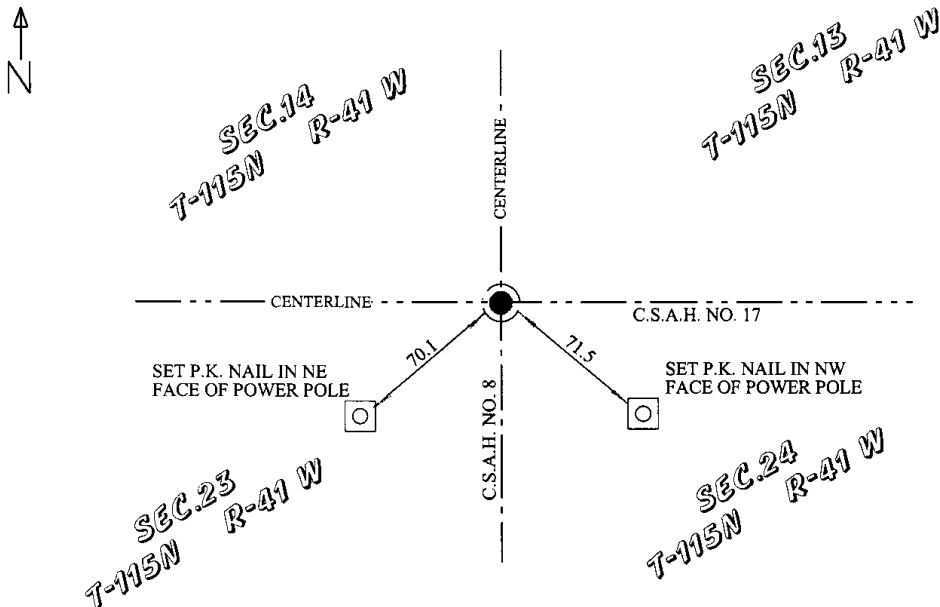
At the corner location shown on the sketch

On.....3-14-06.....found a.....MAGNETIC NAIL.....
Date

left monument as found, lowered monument removed monument(explain)

On.....placed a.....
Date

SKETCH OF REFERENCE TIES



Statement of evidence relative to this corner location is on back of page.

I hereby certify that this document and the data contained herein was prepared by me or under my direct supervision.

[Signature] 3-16-06
Signature Date

Registration No.42300.....

Land Surveyor, County Surveyor,

Professional Engineer County Engineer.

OFFICE OF THE COUNTY RECORDER

County of

I hereby certify that this document was filed in the County Recorders office at.....M. on theday of.....A.D., 20....

County Recorder.....

By Deputy

DOCUMENT NO.

STATEMENT OF EVIDENCE:

SOUTHWEST CORNER OF SECTION 13, TOWNSHIP 115 N, RANGE 41 W, YELLOW MEDICINE COUNTY, MINNESOTA

JULY 1916 - H.L. WADELL MADE A RESURVEY OF SECTION 14, TOWNSHIP 115N, RANGE 41W. HE REPORTS ALL SECTION CORNERS FOUND. SET QUARTER CORNERS AT EQUAL DISTANCE. NO TIES WERE RECORDED.

MARCH 13, 2006- BENJAMIN C. O'MALLEY SEARCHED FOR ALL ORIGINAL GOVERNMENT MONUMENT EVIDENCE. NON WAS FOUND. FOUND A MAGNETIC NAIL AT THE INTERSECTION OF THE CENTERLINE OF C.S.A.H. NO. 8 AND THE CENTERLINE OF C.S.A.H. NO. 17. NEW TIES WHERE MADE.

Doc# 240196 Fee: \$.00 2 Pages

Office of County Recorder
Yellow Medicine County, Minnesota
I hereby certify that the within instrument
was filed on March 16, 2006 at 10:15 AM

Kay Zempel, Yellow Medicine County Recorder

BY Heidi J. Berkefeld Deputy

N/C O'Malley & Bae Land Surveyors, Inc.
328-SW. 3rd St., Willmar 56201