

### CERTIFICATE OF LOCATION OF GOVERNMENT CORNER

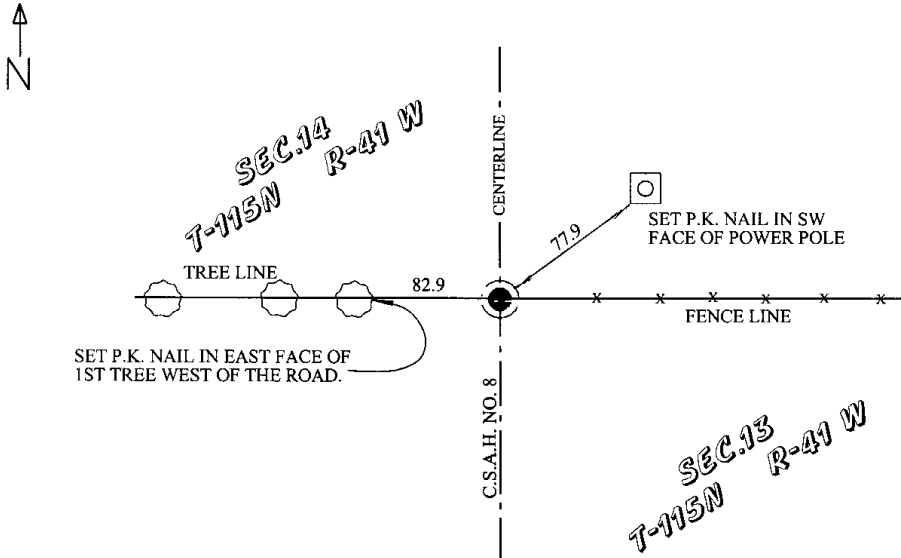
.....W 1/4.....Corner of Section...13.....Township...115 N...Range 41 W 5th P.M.

STATE OF MINNESOTA, County of...YELLOW MEDICINE

At the corner location shown on the sketch

- On.....found a.....  
Date
- left monument as found,     lowered monument     removed monument(explain)
- On...3-14-06...placed a.....MAGNETIC NAIL.....  
Date

#### SKETCH OF REFERENCE TIES



Statement of evidence relative to this corner location is on back of page.

I hereby certify that this document and the data contained herein was prepared by me or under my direct supervision.

Ben Comly      3-16-06  
Signature                                  Date

Registration No. ....42300.....  
 Land Surveyor,     County Surveyor,  
 Professional Engineer     County Engineer.

#### OFFICE OF THE COUNTY RECORDER

County of .....  
I hereby certify that this document was filed in the County Recorders office at.....M. on the .....day of.....A.D., 20....

County Recorder.....

By ..... Deputy

DOCUMENT NO. ....

STATEMENT OF EVIDENCE:

WEST QUARTER CORNER OF SECTION 13, TOWNSHIP 115 N, RANGE 41 W, YELLOW MEDICINE COUNTY, MINNESOTA

JULY 1916 - H.L. WADELL MADE A RESURVEY OF SECTION 14, TOWNSHIP 115N, RANGE 41W. HE REPORTS ALL SECTION CORNERS FOUND. SET QUARTER CORNERS AT EQUAL DISTANCE. NO TIES WERE RECORDED.

MARCH 13, 2006- BENJAMIN C. O'MALLEY SEARCHED FOR ALL ORIGINAL GOVERNMENT MONUMENT EVIDENCE. NON WAS FOUND. SET A MAGNETIC NAIL AT EQUAL DISTANCE ON A STRAIGHT LINE BETWEEN THE NORTHWEST AND SOUTHWEST CORNERS OF SECTION 13. NEW TIES WHERE MADE.

Doc# 240197 Fee: \$.00 2 Pages

Office of County Recorder  
Yellow Medicine County, Minnesota  
I hereby certify that the within instrument  
was filed on March 16, 2006 at 10:20 AM

Kay Zempel, Yellow Medicine County Recorder

BY Heidi Jonke Lund Deputy

N/c O'Malley & Bos Land Surveyors, Inc.  
328 SW 3rd St, Willmar 56201