

CERTIFICATE OF LOCATION OF GOVERNMENT CORNER

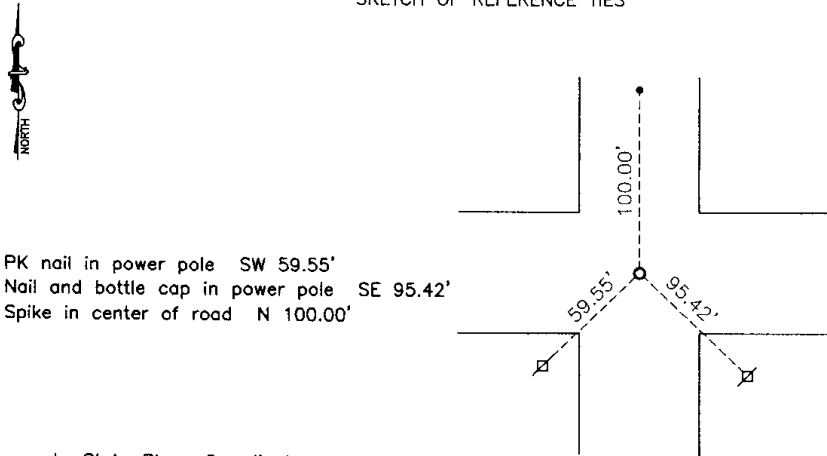
NORTHEAST Corner of Section 36, Township 114, Range 41, 5TH P.M.

STATE OF MINNESOTA, County of YELLOW MEDICINE

At the corner location shown on the sketch:

- On 02-02-2006 found a RAILROAD SPIKE
DATE
- left monument as found, lowered monument, removed monument (explain)
- On 02-02-2006 placed a 5/8" IRON W/ SEAL #43844
DATE

SKETCH OF REFERENCE TIES



PK nail in power pole SW 59.55'
 Nail and bottle cap in power pole SE 95.42'
 Spike in center of road N 100.00'

Minnesota State Plane Coordinate
 System Yellow Medicine County Datum
 NAD83 (1996)
 N: 137633.563
 E: 545045.111

Statement of evidence relative to this corner location is on back of page.

I hereby certify that this document and the data contained herein was prepared by me or under my direct supervision.

[Handwritten Signature] 2/13/06
SIGNATURE DATE

Registration No. 43844

- Land Surveyor, Professional Engineer
- County Surveyor, County Engineer

OFFICE OF THE COUNTY RECORDER

County of _____

I hereby certify that this document was filed in the Co. Recorders office at _____ M on the _____ day of _____ A.D. 20____

County Recorder _____

By _____, Deputy

DOCUMENT NO. _____

Statement of Evidence

In 1858, W. J. Neely did the original survey of the township lines.

(No Date) The Yellow Medicine County Highway Department found a stone at the corner and placed a railroad spike over it.

On February 2, 2006 Bueltel-Moseng Land Surveying found a railroad spike set by the county. We removed the spike and set a $\frac{3}{8}$ " iron with seal #43844 in its place.

Doc# 240395 Fee: \$.00 2 Pages

Office of County Recorder
Yellow Medicine County, Minnesota
I hereby certify that the within instrument
was filed on April 11, 2006 at 09:45 AM

Kay Zempel, Yellow Medicine County Recorder

BY *Mai Rohlík* Deputy

N/C
Bueltel-Moseng Land Surveying
P.O. Box 32
Marshall, MN 56258