

CERTIFICATE OF LOCATION OF GOVERNMENT CORNER

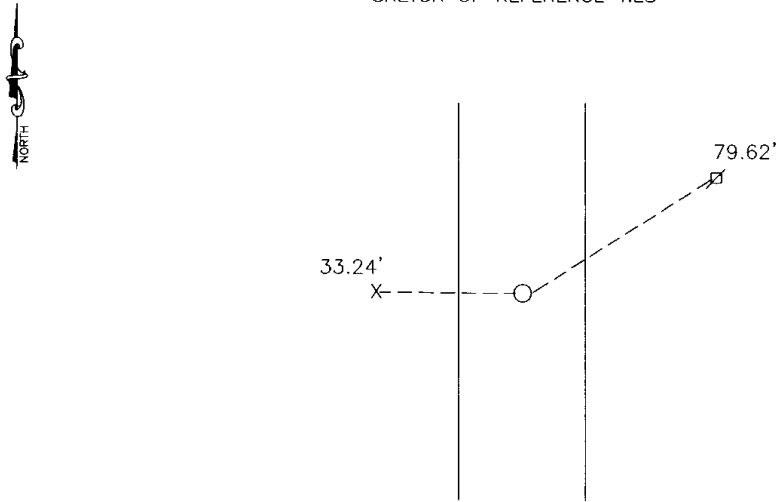
East Quarter Corner of Section 22, Township 113, Range 39, 5th P.M.

STATE OF MINNESOTA, County of Yellow Medicine

At the corner location shown on the sketch:

- On 10-02-2000 found a Nothing
DATE
- left monument as found, lowered monument, removed monument (explain)
- On 10-02-2000 placed a 5/8" rerod with a seal #11943
DATE

SKETCH OF REFERENCE TIES



Nail and seal in cut off power pole (corner fence post) 33.24' West
 Nail and seal in power pole 79.62' Northeast

Statement of evidence relative to this corner location is on back of page.

I hereby certify that this document and the data contained herein was prepared by me or under my direct supervision.

Gayle C. Manning 1-16-06
SIGNATURE DATE
 Registration No. 11943

- Land Surveyor, Professional Engineer
- County Surveyor, County Engineer

OFFICE OF THE COUNTY RECORDER
 County of _____

I hereby certify that this document was filed in the Co. Recorders office at _____ M on the _____ day of _____ A.D. 19 ____

County Recorder _____
 By _____, Deputy

DOCUMENT NO. _____

Statement of Evidence

In 1864, Ches E Davis and L. W. Webb, Jr. did the original subdivision of the township.

There was a stone recorded in 1910.

On 10-02-2000, Moseng Land Surveying dug with backhoe and found nothing. We set a 5/8" rerod with seal proportionate distance between section corners and 33' East of corner fence post. On line fell 7' West.

Doc# 240411 Fee: \$ 2 Pages

Office of County Recorder
Yellow Medicine County, Minnesota
I hereby certify that the within instrument
was filed on April 12, 2006 at 10:15 AM

Kay Zempel, Yellow Medicine County Recorder

BY Dave Roblik Deputy

N/C
Bueltel-Moseng Land Surveying
P.O. Box 32
Marshall, MN 56258