

CERTIFICATE OF LOCATION OF GOVERNMENT CORNER

NE Corner of Section 32, Township 114N, Range 38W, 5TH P.M.

STATE OF MINNESOTA, County of YELLOW MEDICINE

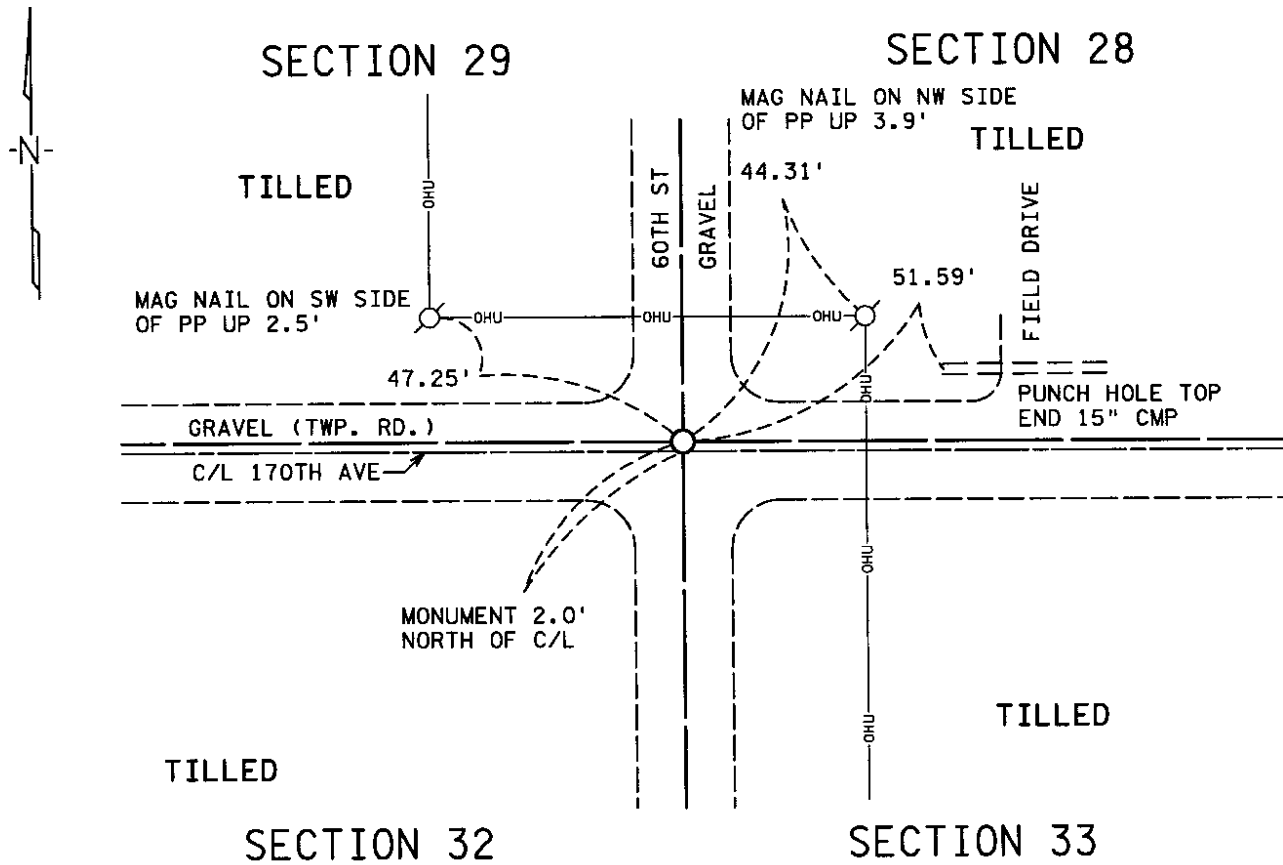
At the corner location shown on the sketch :

On 07-21-06 found 6" x 6" CUT STONE MONUMENT DOWN 1.9'

left monument as found, lowered monument, removed monument (explain)

On 07-26-06 placed 3/4" IRON PIPE WITH YELLOW CAP #22422
DOWN 0.5'

Sketch of reference ties



Statement of evidence relative to this corner location is on back page

I hereby certify that this document and the data contained herein was prepared by me and under my direct supervision.

Douglas D. Rude 8-2-06
Signature Date

Registration No. 22422

- Land surveyor, Professional Engineer
 County Surveyor, County Engineer

OFFICE OF THE COUNTY RECORDER

County of _____

I hereby certify that this document was filed in the Co. Recorder office at _____ .M on the _____ day of _____ A.D., 20

County Recorder _____

By _____, Deputy

DOCUMENT NO. _____

Office of County Recorder
 Yellow Medicine County, Minnesota
 I hereby certify that the within instrument
 was filed on September 14, 2006 at 10:00 AM
 Kay Zempel, Yellow Medicine County Recorder

NC Yaggy Colby Assoc. Inc. 1270 Northland Dr.

Suite 150, Mendota Heights MN 55120

Statement of Evidence

BY *Neidi O. Bakkelund* Deputy

NORTHEAST CORNER OF SECTION 32, TOWNSHIP 114 NORTH, RANGE 38 WEST,
 5TH P.M.

October 1864:

Chase Davis & J.W. Webb Jr., Deputy Surveyors, set a post in mound with pits for the corner during the Original Public Land Survey.

May 07, 1891:

Jonah Pederman, County Surveyor, performed a survey of Section 33 and indicates measured distances of 79.84 chains (5269.4 feet) along the west line, and 80 chains along the north line. He states he found the "government corner" at the northwest and northeast corners of Section 33, however he did not indicate the type of monument found. Refer to survey of record, page 45.

1901:

John Norgaard, County Surveyor, set a jasper stone monument at the corner.

September, 1911:

John Norgaard, County Surveyor, found jasper stone monuments in place at the 4 section corners of adjacent Section 28. Norgaard reported a distance of 5276 feet along the south line of section 28. Refer to survey of record page 249.

July 17, 1926:

John Norgaard, County Surveyor, reports a distance along the south line of Section 29 as 5310 feet and includes ties to the corner, but does not describe the type of monument. Refer to survey of record page 503.

May, 2006:

Isaiah Reicks, Yaggy Colby Associates, found an uncapped ½" rebar in the gravel road. No record was found regarding the origin of the ½" rebar. Reicks measured easterly 5278.1 feet along the south line of Section 28 to a certified cast iron monument. This agrees within 2.0 feet of Pederman's 1891 survey. He also measured westerly 5311.9 feet along the south line of Section 29 to a certified 1 inch iron pipe. This agrees within 2.0 feet of Norgaard's 1926 survey. He also measured southerly 5265.4 feet to a found spike. This agrees within 4.0 feet of Pederman's 1891 survey.

July 21, 2006:

Mark Haselius, Yaggy Colby Associates, dug with a backhoe in the vicinity of the found ½" rebar. The old gravel roadbed was discovered at a depth of 1.9 feet. At this depth, the top of a 6" by 6" jasper stone post was found along with a rotten wood lath on the north side of the stone. The found stone post is directly below the ½" rebar. Additional digging with a shovel to a depth of 3.0 feet revealed the smooth sides of the stone post. An analysis of the record and survey data indicates that the stone post is likely the same one that Norgaard set in 1901 and later referred to in his 1911 survey. The stone post is accepted as a perpetuation of the original Public Land Survey. For more information regarding this survey, please contact Yaggy Colby Associates, Rochester, MN.

July 26, 2006

Isaiah Reicks, Yaggy Colby Associates, set a ¾ inch iron pipe with yellow cap at the surface, directly above the stone post to mark the Section Corner.