

# CERTIFICATE OF LOCATION OF GOVERNMENT CORNER

NORTHEAST Corner of Section 29, Township 115, Range 45, 5TH P.M.

STATE OF MINNESOTA, County of YELLOW MEDICINE

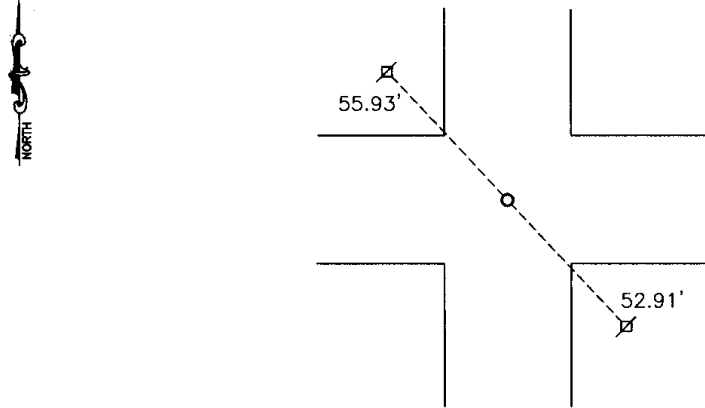
At the corner location shown on the sketch:

On MAY 22, 2007 found a 5/8" REROD WITH SEAL  
DATE

left monument as found,  lowered monument,  removed monument (explain)

On \_\_\_\_\_ placed a \_\_\_\_\_  
DATE

SKETCH OF REFERENCE TIES



Minnesota State Plane Coordinate  
System Yellow Medicine County Datum  
NAD83 (1996)  
N: 175172.787  
E: 396685.242

NAIL AND SEAL IN POWER POLE NORTHWEST 55.93'  
NAIL AND SEAL IN POWER POLE SOUTHEAST 52.91'

Statement of evidence relative to this corner location is on back of page.

I hereby certify that this document and the data contained herein was prepared by me or under my direct supervision.

*Samuel Ben...* 7/13/07  
SIGNATURE DATE

Registration No. 43844

Land Surveyor,  Professional Engineer  
 County Surveyor,  County Engineer

OFFICE OF THE COUNTY RECORDER

County of \_\_\_\_\_

I hereby certify that this document was filed in the Co. Recorders office at \_\_\_\_\_ M on the \_\_\_\_\_ day of \_\_\_\_\_ A.D. 20 \_\_\_\_\_

County Recorder \_\_\_\_\_

By \_\_\_\_\_, Deputy

DOCUMENT NO. \_\_\_\_\_

Statement of Evidence

In 1945 a stone marker was placed.

On May 22, 2007 Bueltel Moseng Land Surveying found Mark Herd rerod with seal in the center of the road at the surface. We pulled the rerod and dug with a backhoe (Galen Hegg) and found nothing. We replaced the rerod and seal to its original found location.

Doc# 244528 Fee: \$0.00 2 Pages

Office of County Recorder  
Yellow Medicine County, Minnesota  
I hereby certify that the within instrument  
was filed on December 7, 2007 at 02:10 PM

Kay Zempel, Yellow Medicine County Recorder

BY Debra Blood Deputy

N/C  
Bueltel-Moseng Land Surveying  
P.O. Box 32  
Marshall, MN 56258