

# CERTIFICATE OF LOCATION OF GOVERNMENT CORNER

EAST QUARTER Corner of Section 31, Township 115, Range 43, 5TH P.M.

STATE OF MINNESOTA, County of YELLOW MEDICINE

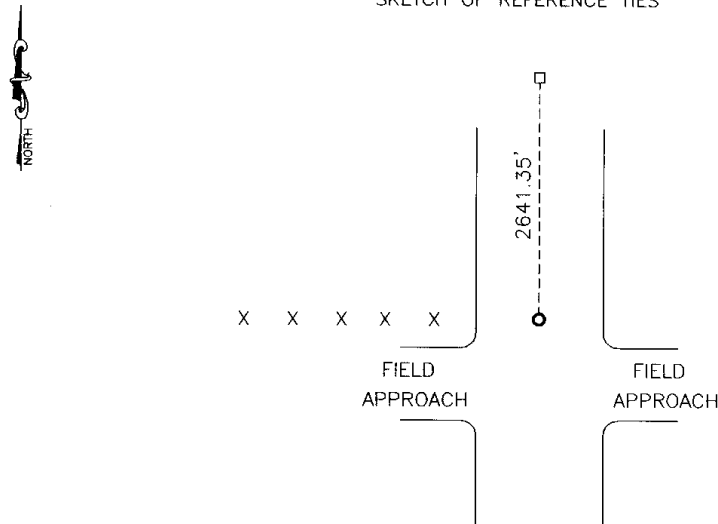
At the corner location shown on the sketch:

On 08-02-2006 found a LARGE FIELD STONE  
DATE

left monument as found,  lowered monument,  removed monument (explain)

On 08-02-2006 placed a 1" PIPE WITH SEAL #11943 AT ROAD SURFACE.  
DATE

SKETCH OF REFERENCE TIES



Statement of evidence relative to this corner location is on back of page.

I hereby certify that this document and the data contained herein was prepared by me or under my direct supervision.

Stacy C. Moser 2-28-07  
SIGNATURE DATE

Registration No. 11948

- Land Surveyor,  Professional Engineer
- County Surveyor,  County Engineer

OFFICE OF THE COUNTY RECORDER

County of \_\_\_\_\_

I hereby certify that this document was filed in the Co. Recorders office at \_\_\_\_\_ M on the \_\_\_\_\_ day of \_\_\_\_\_ A.D. 20 \_\_\_\_\_

County Recorder \_\_\_\_\_

By \_\_\_\_\_, Deputy

DOCUMENT NO. \_\_\_\_\_

Statement of Evidence

In 1911, John Norgaard set a stone at the corner.

On August 2, 2006, Bueltel-Moseng Land Surveying dug with a backhoe and found a stone. We set 2 irons next to the stone, and a 1" pipe with seal #11943 at the road surface.

Doc# 244531 Fee: \$0.00 2 Pages

Office of County Recorder  
Yellow Medicine County, Minnesota  
I hereby certify that the within instrument  
was filed on December 7, 2007 at 02:25 PM

Kay Zempel, Yellow Medicine County Recorder

BY Debra Blood Deputy

N/C  
Bueltel-Moseng Land Surveying  
P.O. Box 32  
Marshall, MN 56258