

# CERTIFICATE OF LOCATION OF GOVERNMENT CORNER

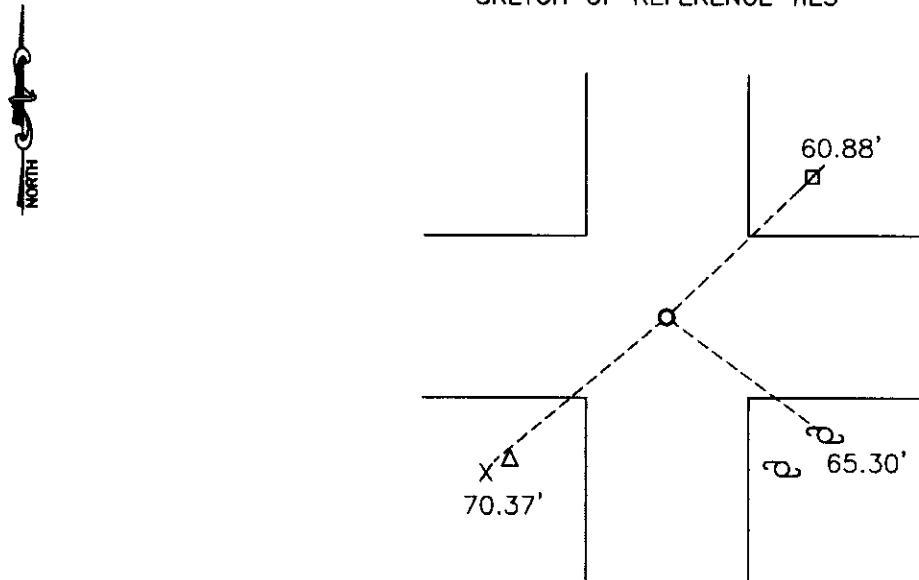
NORTHEAST Corner of Section 28, Township 115, Range 41, 5TH P.M.

STATE OF MINNESOTA, County of YELLOW MEDICINE

At the corner location shown on the sketch:

- On 11-07-2007 found a 10" FIELD STONE OVER A 6"X6" GRANITE MONUMENT  
DATE
- left monument as found,  lowered monument,  removed monument (explain)
- On 11-07-2007 placed a 1" IRON PIPE WITH SEAL #43844  
DATE

SKETCH OF REFERENCE TIES



Minnesota State Plane Coordinate  
 System Yellow Medicine County Datum  
 NAD83 (1996)  
 N: 174847.911  
 E: 529008.052

Nail and bottle cap in power pole NE 60.88'  
 Nail and seal in pedestal guard post SW 70.37'  
 Top center of NE'ly water valve SE 65.30'

Statement of evidence relative to this corner location is on back of page.

I hereby certify that this document and the data contained herein was prepared by me or under my direct supervision.

*[Signature]* Feb. 20, 2008  
SIGNATURE DATE

Registration No. 43844

- Land Surveyor,  Professional Engineer
- County Surveyor,  County Engineer

OFFICE OF THE COUNTY RECORDER  
 County of \_\_\_\_\_

I hereby certify that this document was filed in the Co. Recorders office at \_\_\_\_\_ .M on the \_\_\_\_\_ day of \_\_\_\_\_ A.D. 20 \_\_\_\_\_

County Recorder \_\_\_\_\_

By \_\_\_\_\_, Deputy

DOCUMENT NO. \_\_\_\_\_

## Statement of Evidence

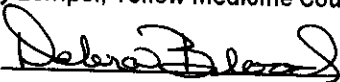
In 1864, Chas E. Davis and J.W. Webb, Jr., did the original subdivision of the township.

On November 7, 2007, Bueltel-Moseng Land Surveying dug with a backhoe and found a 10" field stone over a 6"x6" granite monument. We placed a  $\frac{3}{8}$ " iron with seal #43844 along the south side of the granite monument. We also placed a 1" iron pipe with seal #43844 at the road surface.

Doc# 245313 Fee: \$0.00 2 Pages

Office of County Recorder  
Yellow Medicine County, Minnesota  
I hereby certify that the within instrument  
was filed on April 8, 2008 at 10:40 AM

N/C Bueltel-Moseng Land Surveying  
PO Box 32  
Marshall MN 56258

Kay Zempel, Yellow Medicine County Recorder  
By  Deputy