

CERTIFICATE OF LOCATION OF GOVERNMENT CORNER

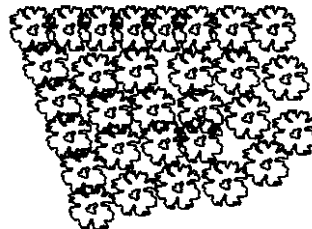
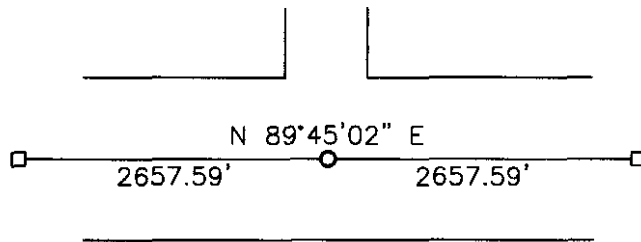
NORTH QUARTER Corner of Section 28, Township 115, Range 41, 5TH P.M.

STATE OF MINNESOTA, County of YELLOW MEDICINE

At the corner location shown on the sketch:

- On _____ found a _____
DATE
- left monument as found, lowered monument, removed monument (explain)
- On 11-07-2007 placed a 1" IRON PIPE WITH SEAL #43844
DATE

SKETCH OF REFERENCE TIES



Minnesota State Plane Coordinate
System Yellow Medicine County Datum
NAD83 (1996)

N: 174836.341
E: 526350.478

Statement of evidence relative to this corner location is on back of page.

I hereby certify that this document and the data contained herein was prepared by me or under my direct supervision.

Paul S. Smith Feb. 20, 2008
SIGNATURE DATE

Registration No. 43844

- Land Surveyor, Professional Engineer
- County Surveyor, County Engineer

OFFICE OF THE COUNTY RECORDER

County of _____

I hereby certify that this document was filed in the Co. Recorders office at _____ M on the _____ day of _____ A.D. 20 _____

County Recorder _____

By _____, Deputy

DOCUMENT NO. _____

Statement of Evidence

In 1864, Chas E. Davis and J. W. Webb, Jr., did the original subdivision of the township.

On November 7, 2007, Bueltel-Moseng Land Surveying dug with a backhoe and found nothing. We set a 1" iron pipe with seal #43844 midway and on line between the section corners.

N/C Bueltel-Moseng Land Surveying
PO Box 32
Marshall MN 56258

Doc# 245314 Fee: \$0.00 2 Pages
Office of County Recorder
Yellow Medicine County, Minnesota
I hereby certify that the within instrument
was filed on April 8, 2008 at 10:45 AM

Kay Zempel, Yellow Medicine County Recorder

By Debra B. Bland Deputy