

CERTIFICATE OF LOCATION OF GOVERNMENT CORNER

NORTHEAST Corner of Section 21, Township 115, Range 44, 5TH P.M.

STATE OF MINNESOTA, County of YELLOW MEDICINE

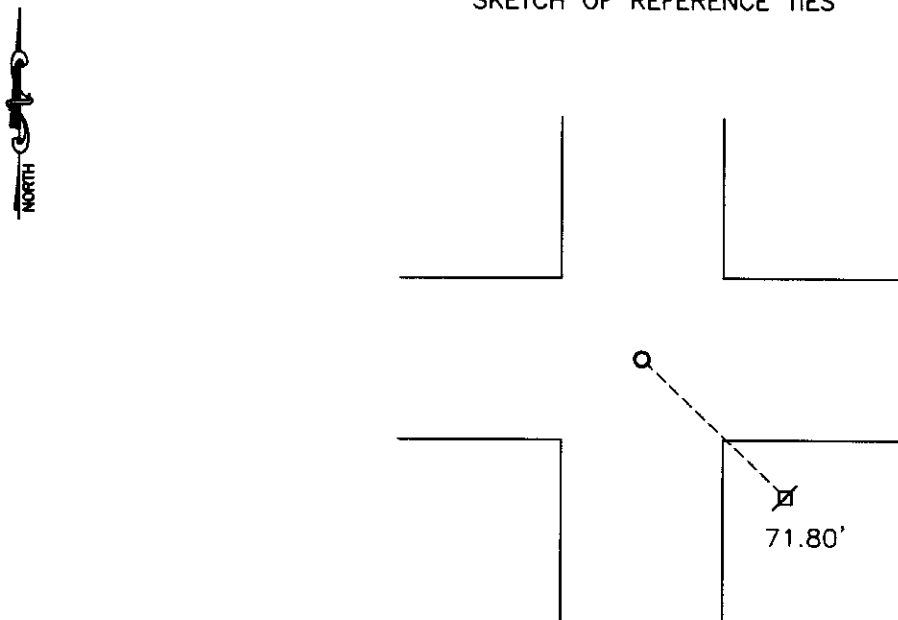
At the corner location shown on the sketch:

On 04-02-2007 found a IRON USING COUNTY TIES.
DATE

left monument as found, lowered monument, removed monument (explain)

On 04-02-2007 placed a 5/8" IRON WITH SEAL #43844
DATE

SKETCH OF REFERENCE TIES



Statement of evidence relative to this corner location is on back of page.

I hereby certify that this document and the data contained herein was prepared by me or under my direct supervision.

David J. Bush Feb. 19, 2008
SIGNATURE DATE

Registration No. 43844

Land Surveyor, Professional Engineer
 County Surveyor, County Engineer

OFFICE OF THE COUNTY RECORDER

County of _____

I hereby certify that this document was filed in the Co. Recorders office at _____ .M on the _____ day of _____ A.D. 20 _____

County Recorder _____

By _____, Deputy

DOCUMENT NO. _____

Statement of Evidence

In 1871, Harrington did the original subdivision of the township.

In March 1912, John Norgaard found a stone monument at the corner.

In 1971, the Yellow Medicine County Highway Department found a granite stone at the corner.

In 1995, the Yellow Medicine County Highway Department found an iron over the stone at the corner.

On April 2, 2007, Bueltel-Moseng Land Surveying found an iron at the corner using the old county ties. We set a $\frac{5}{8}$ " iron with seal #43844 over the found iron.

Doc# 245321 Fee: \$0.00 2 Pages

Office of County Recorder
Yellow Medicine County, Minnesota
I hereby certify that the within instrument
was filed on April 8, 2008 at 11:20 AM

N/C Bueltel-Moseng Land Surveying
PO Box 32
Marshall MN 56258

Kay Zempel, Yellow Medicine County Recorder

By  Deputy