

CERTIFICATE OF LOCATION OF GOVERNMENT CORNER

NORTH QUARTER Corner of Section 30, Township 114, Range 40, 5TH P.M.

STATE OF MINNESOTA, County of YELLOW MEDICINE

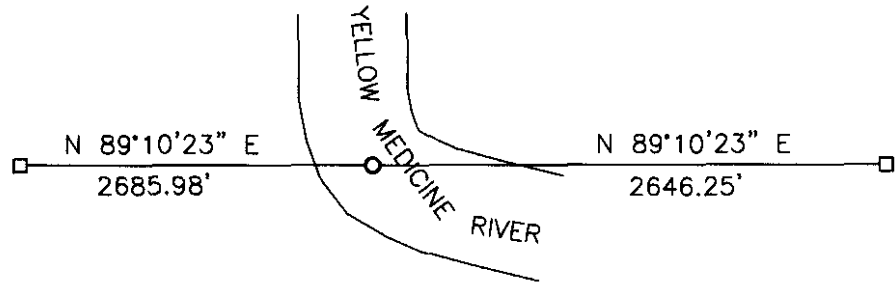
At the corner location shown on the sketch:

On _____ found a _____
DATE

left monument as found, lowered monument, removed monument (explain)

On 05-04-2007 placed a NOTHING (SEE BACK)
DATE

SKETCH OF REFERENCE TIES



Minnesota State Plane Coordinate
System Yellow Medicine County Datum
NAD83 (1996)

N: 142957.012
E: 547733.577

Statement of evidence relative to this corner location is on back of page.

I hereby certify that this document and the data contained herein was prepared by me or under my direct supervision.

Samuel Butler Feb. 19, 2008
SIGNATURE DATE

Registration No. 43844

Land Surveyor, Professional Engineer
 County Surveyor, County Engineer

OFFICE OF THE COUNTY RECORDER
County of _____

I hereby certify that this document was filed in the Co. Recorders office at _____ .M on the _____ day of _____ A.D. 20 _____

County Recorder _____

By _____, Deputy

DOCUMENT NO. _____

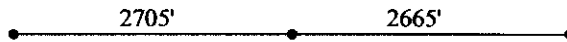
Statement of Evidence

In 1858, W. J. Neely did the original survey of the township lines.

In November 1874, the County Surveyor recorded the following distances across the north line of Section 30-114-40.



In September 1926, the County Surveyor recorded the following distances across the north line of Section 30-114-40.



On May 4, 2007, Bueltel-Moseng Land Surveying established the corner as on line and single proportionate distance using the 1926 survey. It fell in the river and was not able to be set.

N/C Bueltel-Moseng Land Surveying
PO Box 32
Marshall MN 56258

Doc# 245326 Fee: \$0.00 2 Pages

Office of County Recorder
Yellow Medicine County, Minnesota
I hereby certify that the within instrument
was filed on April 8, 2008 at 11:45 AM

Kay Zempel, Yellow Medicine County Recorder

By Delva Blood Deputy