

# CERTIFICATE OF LOCATION OF GOVERNMENT CORNER

Northeast Corner of Section 36, Township 115N, Range 40W

5th Principal Meridian, State of Minnesota, County of Yellow Medicine

At the corner location shown on the sketch:

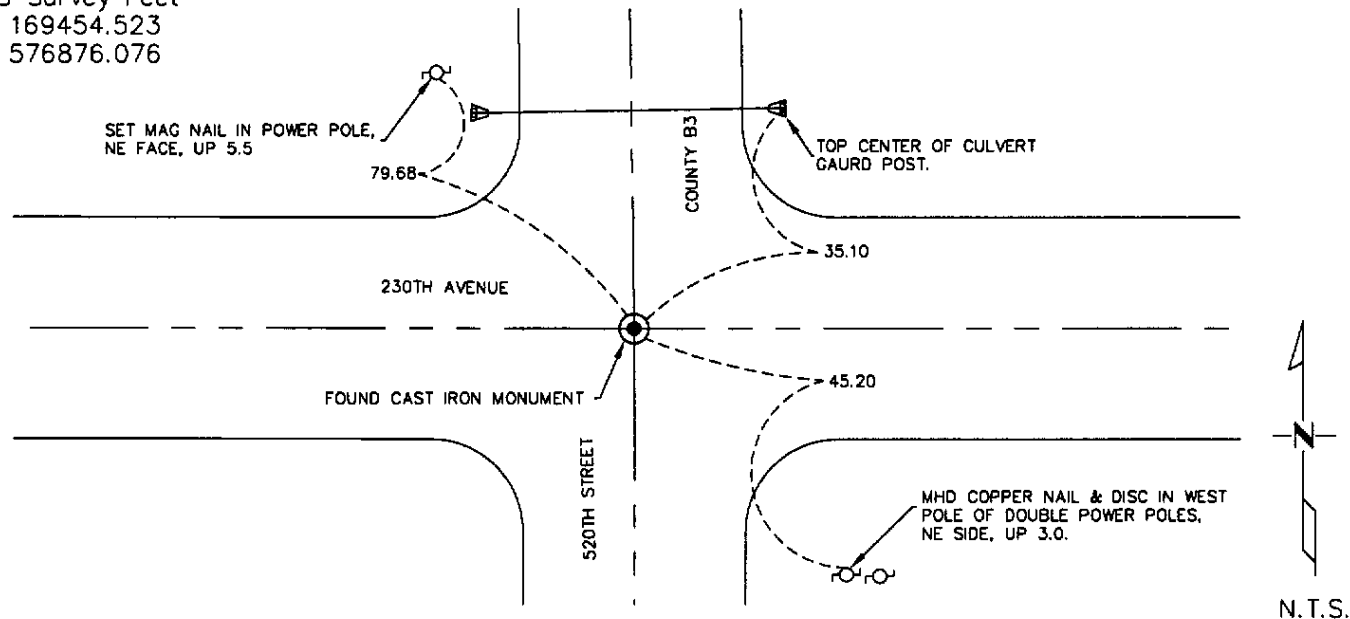
On 07/15/08 found a Cast Iron Monument  
DATE

left monument as found     lowered monument     removed monument (explain)

On 07/15/08 placed a checked existing ties and set new ties  
DATE

### SKETCH OF REFERENCE TIES

1983 NAD(1996adj.)  
Yellow Medicine County Coordinates  
US Survey Feet  
N 169454.523  
E 576876.076



Statement of evidence for this corner location is on back of this page.

I hereby certify that this document was researched and prepared by me or under my direct supervision and that I am a licensed Land Surveyor under the laws of the State of Minnesota.

Signature \_\_\_\_\_

Date 07/31/08 License No. 23021

Title:

- Land Surveyor     Professional Engineer
- County Surveyor     County Engineer

OFFICE OF THE COUNTY RECORDER

County of \_\_\_\_\_

I hereby certify that this document was filed in the Co.

Records office at \_\_\_\_\_, M. on the \_\_\_\_\_ day of \_\_\_\_\_ A.D. 20\_\_\_\_\_

County Recorder \_\_\_\_\_

by \_\_\_\_\_, Deputy

DOCUMENT NO. \_\_\_\_\_

STATEMENT OF EVIDENCE:

NORTHEAST CORNER SECTION 36, T115N, RVIOW, 5TH P. M.

The original Public Land Survey was completed in 1864 by Charles E. Davis and J.W.Webb Jr. and a wood post was set in a dirt mound with pits to mark the corner.

In 1901, John Norgaard, County. Surveyor, found a stone and stake set by adjoining landowners in the government mound. He set a 6"x 6" x 24" granite monument at this location.

Information in the County Engineer's Office shows that the granite monument was found in 1928, in 1937, in 1939 and again in 1964 when an iron monument was placed above the granite monument.

The iron monument was not found during the 1972 excavation. However, five large field stones piled on top of the granite monument were found.

An analysis of this data provides acontinuous chain of record perpetuating the location of the original Public Land Survey corner.

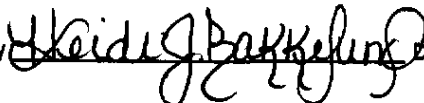
For details of survey analysis and 1972 electronic survey measurements see Survey Report for S. P. 8701-18 from 0.3 miles North of the Yellow Medicine River to Granite Falls on file in the Survey Section, Minnesota Highway Department, Willmar, Minnesota.

N/C  
WESTWOOD PROFESSIONAL  
SERVICES  
7699 ANAGRAM DR  
EDEN PRAIRIE MN 55344

Doc# 246190 Fee: \$0.00 2 Pages

Office of County Recorder  
Yellow Medicine County, Minnesota  
I hereby certify that the within instrument  
was filed on August 6, 2008 at 10:00 AM

Kay Zempel, Yellow Medicine County Recorder

By  Deputy