

CERTIFICATE OF LOCATION OF GOVERNMENT CORNER

North Quarter _____ Corner of Section 36, Township 115N, Range 40W

5th Principal Meridian, State of Minnesota, County of Yellow Medicine

At the corner location shown on the sketch:

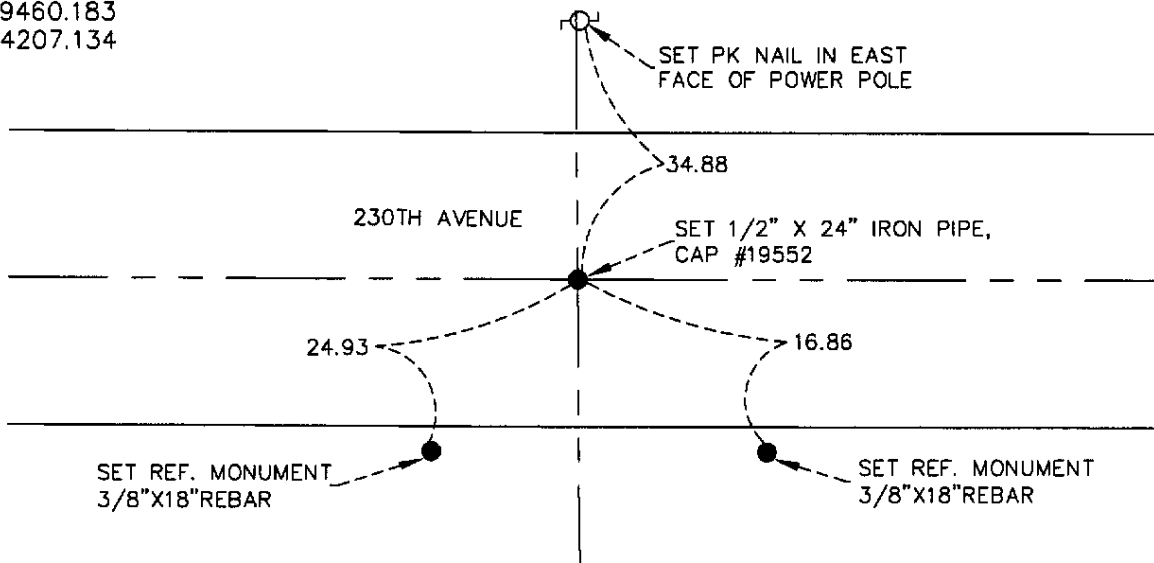
On 07/16/08 found a 8"X8"X18" field stone with double lath on south side of stone
DATE

left monument as found lowered monument removed monument (explain)

On 07/16/08 placed a 1/2"X24" Iron Pipe, cap # 19552 over stone,
DATE
6" below road surface, set three reference ties

SKETCH OF REFERENCE TIES

1983 NAD(1996adj.)
Yellow Medicine County Coordinates
US Survey Feet
N 169460.183
E 574207.134



N.T.S.

Statement of evidence for this corner location is on back of this page.

I hereby certify that this document was researched and prepared by me or under my direct supervision and that I am a licensed Land Surveyor under the laws of the State of Minnesota.

Signature _____

Date 07/31/08 License No. 23021

Title:

- Land Surveyor Professional Engineer
- County Surveyor County Engineer

OFFICE OF THE COUNTY RECORDER

County of _____

I hereby certify that this document was filed in the Co.

Records office at _____, M. on the _____ day of _____, A.D. 20____

County Recorder _____

by _____, Deputy

DOCUMENT NO. _____

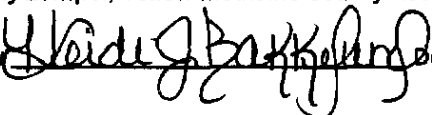
STATEMENT OF EVIDENCE:

NORTH QUARTER CORNER SECTION 36, T115W, R40W, 5TH PM

On July 16, 2008 Westwood Professional Services, Inc. dug with a backhoe and found a 8"x8"x18" field stone with double lath on south side of stone marking its location. The stone fit the north and south occupation lines and was the only stone found in the excavation area, stone was 1.8 feet below road surface. No other evidence was found. Left stone in place down 3.0 feet below road surface and set a 1/2"x24" Iron pipe with cap number 19552, down 0.5 feet below road surface, We set three reference monuments, two 3/8" X 18" rebar and one PK in Power Pole.

N/C
WESTWOOD PROFESSIONAL
SERVICES
7699 ANAGRAM DR
EDEN PRAIRIE MN 55344

Doc# 246191 Fee: \$0.00 2 Pages
Office of County Recorder
Yellow Medicine County, Minnesota
I hereby certify that the within instrument
was filed on August 6, 2008 at 10:05 AM

Kay Zempel, Yellow Medicine County Recorder
By  Deputy