

# CERTIFICATE OF LOCATION OF GOVERNMENT CORNER

North Quarter \_\_\_\_\_ Corner of Section 25, Township 115N, Range 40W

5th Principal Meridian, State of Minnesota, County of Yellow Medicine

At the corner location shown on the sketch:

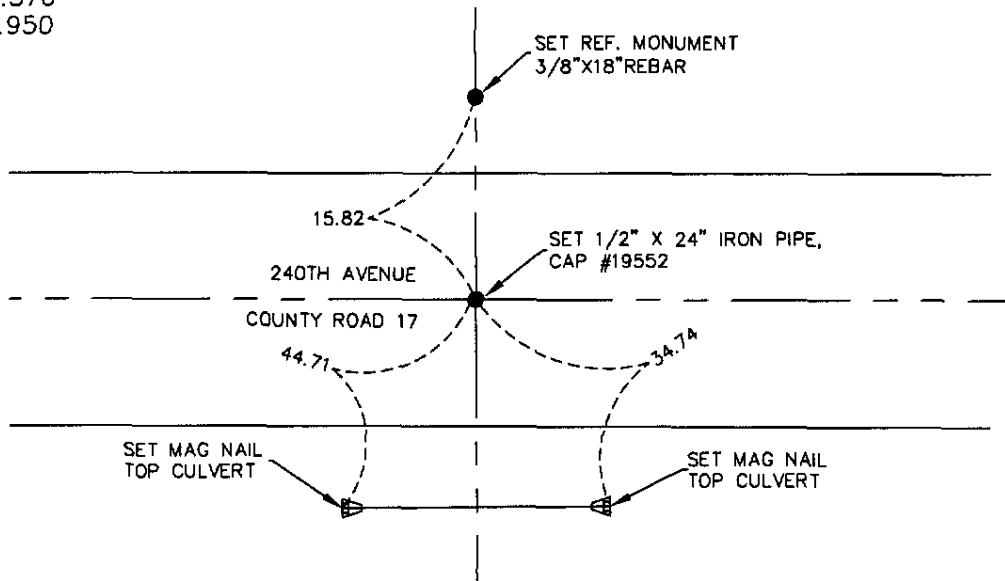
On 07/16/08 found a 1"X36" Iron pipe  
DATE

left monument as found     lowered monument     removed monument (explain)

On 07/16/08 placed a 1/2"X24" Iron Pipe, cap #19552 in 1" location, 6" below  
DATE  
road surface and set three reference ties

### SKETCH OF REFERENCE TIES

1983 NAD(1996adj.)  
Yellow Medicine County Coordinates  
US Survey Feet  
N 174779.376  
E 574160.950



Statement of evidence for this corner location is on back of this page.

I hereby certify that this document was researched and prepared by me or under my direct supervision and that I am a licensed Land Surveyor under the laws of the State of Minnesota.

Signature \_\_\_\_\_

Date 07/31/08 License No. 23021

Title:

- Land Surveyor     Professional Engineer
- County Surveyor     County Engineer

OFFICE OF THE COUNTY RECORDER

County of \_\_\_\_\_

I hereby certify that this document was filed in the Co.

Records office at \_\_\_\_\_ M. on the \_\_\_\_\_ day of \_\_\_\_\_ A.D. 20\_\_\_\_

County Recorder \_\_\_\_\_

by \_\_\_\_\_, Deputy

DOCUMENT NO. \_\_\_\_\_


STATEMENT OF EVIDENCE:

NORTH QUARTER CORNER SECTION 25, T115N, R40W, 5TH PM

On July 16, 2008 Westwood Professional Services, Inc. dug with a backhoe and found a 1"X36" iron pipe that was bent on the top, but straight at the bottom. Continued excavation to clay layer. Set 1/2"X24" Iron pipe, cap #19552 in 1" location, 6" below road surface. We set three reference monuments, one 3/8" X 18" rebar and two mag nails in top of two culverts.

N/C  
WESTWOOD PROFESSIONAL  
SERVICES  
7699 ANAGRAM DR  
EDEN PRAIRIE MN 55344

Doc# 246193 Fee: \$0.00 2 Pages  
Office of County Recorder  
Yellow Medicine County, Minnesota  
I hereby certify that the within instrument  
was filed on August 6, 2008 at 10:15 AM

Kay Zempel, Yellow Medicine County Recorder  
By  Deputy