

CERTIFICATE OF LOCATION OF GOVERNMENT CORNER

North Quarter Corner of Section 24, Township 115N, Range 40W

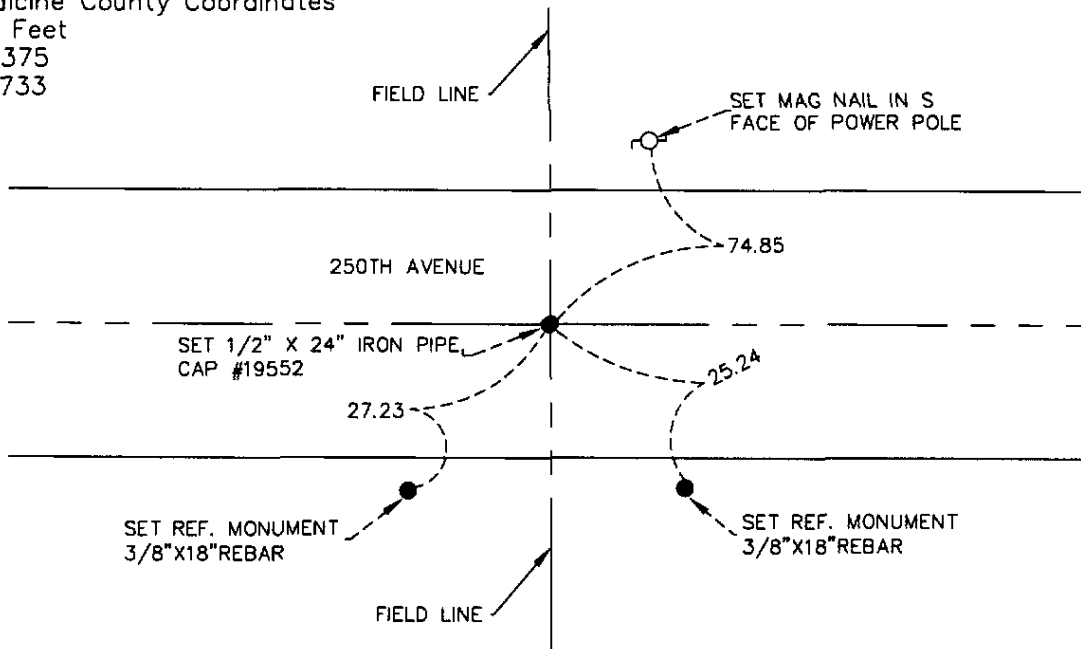
5th Principal Meridian, State of Minnesota, County of Yellow Medicine

At the corner location shown on the sketch:

- On 07/16/08 found a nothing
DATE
- left monument as found lowered monument removed monument (explain)
- On 07/16/08 placed a 1/2"X24" Iron pipe, cap #19552 by single proportion
DATE
and set three reference ties

SKETCH OF REFERENCE TIES

1983 NAD(1996adj.)
 Yellow Medicine County Coordinates
 US Survey Feet
 N 180096.375
 E 574136.733



Statement of evidence for this corner location is on back of this page.

I hereby certify that this document was researched and prepared by me or under my direct supervision and that I am a licensed Land Surveyor under the laws of the State of Minnesota.

Signature _____

Date 07/31/08 License No. 23021

Title:

- Land Surveyor Professional Engineer
- County Surveyor County Engineer

OFFICE OF THE COUNTY RECORDER

County of _____

I hereby certify that this document was filed in the Co.

Records office at _____, M. on the _____ day of _____ A.D. 20____

County Recorder _____

by _____, Deputy

DOCUMENT NO. _____

STATEMENT OF EVIDENCE:

NORTH QUARTER CORNER SECTION 24, T115N, R40W, 5TH PM

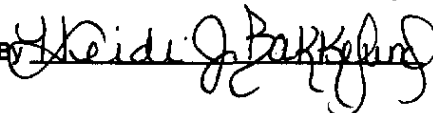
On July 16, 2008 Westwood Professional Services, Inc. dug with a backhoe and area of 15'x25' by 4.5' down to natural clay and found no evidence. We set 1/2"X24" Iron pipe, cap number 19552 by single proportion along with three reference monuments, two 3/8" X 18" rebar and one mag nail in a power pole.

N/C
WESTWOOD PROFESSIONAL
SERVICES
7699 ANAGRAM DR
EDEN PRAIRIE MN 55344

Doc# 246195 Fee: \$0.00 2 Pages

Office of County Recorder
Yellow Medicine County, Minnesota
I hereby certify that the within instrument
was filed on August 6, 2008 at 10:25 AM

Kay Zempel, Yellow Medicine County Recorder

By  Deputy