

CERTIFICATE OF LOCATION OF GOVERNMENT CORNER

Northeast Corner of Section 24, Township 115N, Range 40W

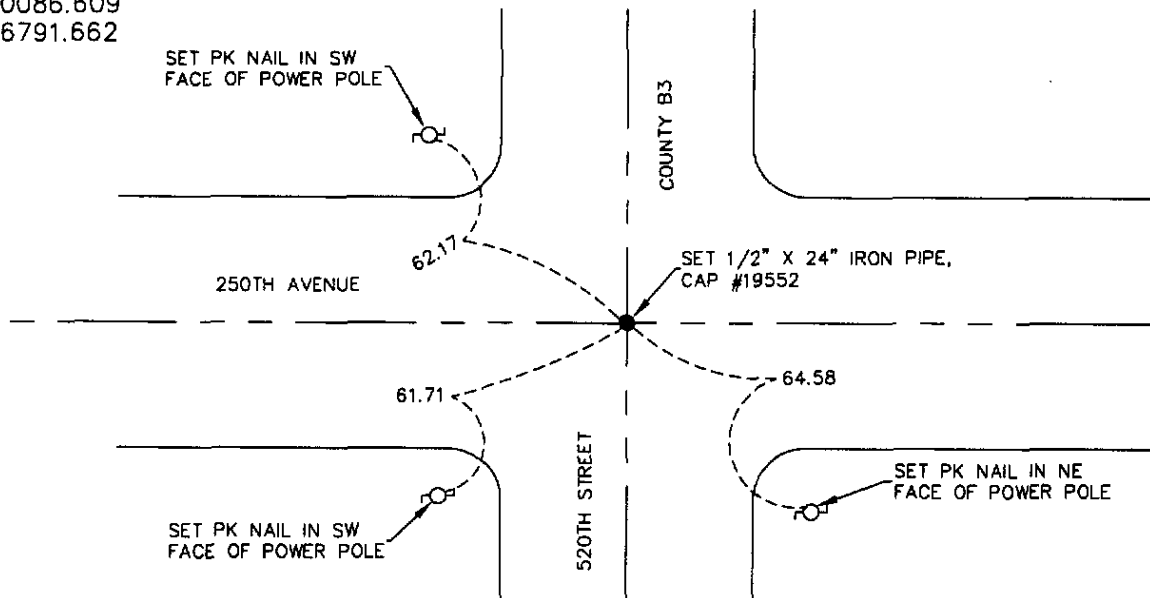
5th Principal Meridian, State of Minnesota, County of Yellow Medicine

At the corner location shown on the sketch:

- On 07/16/08 found a 3/8" rebar, top was bent and a 6"X6"X24" cut granite stone
DATE
- left monument as found lowered monument removed monument (explain)
- On 07/16/08 placed a 1/2"X24" iron pipe, cap #19552 just below road surface and
DATE
over cut granite stone, 3.2' below road surface and set three reference ties.

SKETCH OF REFERENCE TIES

1983 NAD(1996adj.)
 Yellow Medicine County Coordinates
 US Survey Feet
 N 180086.609
 E 576791.662



N.T.S.

Statement of evidence for this corner location is on back of this page.

I hereby certify that this document was researched and prepared by me or under my direct supervision and that I am a licensed Land Surveyor under the laws of the State of Minnesota.

Signature _____

Date 07/31/08 License No. 23021

Title:

- Land Surveyor Professional Engineer
- County Surveyor County Engineer

OFFICE OF THE COUNTY RECORDER

County of _____

I hereby certify that this document was filed in the Co.

Records office at _____ M. on the _____ day of _____ A.D. 20_____

County Recorder _____

by _____, Deputy

DOCUMENT NO. _____

STATEMENT OF EVIDENCE:

NORTHEAST CORNER SECTION 24, T115N, R40W, 5TH PM

On July 16, 2008 Westwood Professional Services, Inc. dug with a backhoe and found a 3/8" rebar, top was bent and a 6"X6"X24" cut granite stone, stone was found leaning south. We tipped stone straight up and shot it, pulled stone to look for wood post, none was found, set stone back in place and buried 3.2' below road surface. We set 1/2" X 24" Iron pipe cap number 19552 over stone just below road surface. We set three reference monuments PK nails in three power poles.

N/C
WESTWOOD PROFESSIONAL
SERVICES
7699 ANAGRAM DR
EDEN PRAIRIE MN 55344

Doc# 246196 Fee: \$0.00 2 Pages

Office of County Recorder
Yellow Medicine County, Minnesota
I hereby certify that the within instrument
was filed on August 6, 2008 at 10:30 AM

Kay Zempel, Yellow Medicine County Recorder

 Deputy