

CERTIFICATE OF LOCATION OF GOVERNMENT CORNER

East Quarter _____ Corner of Section 24, Township 115N, Range 40W

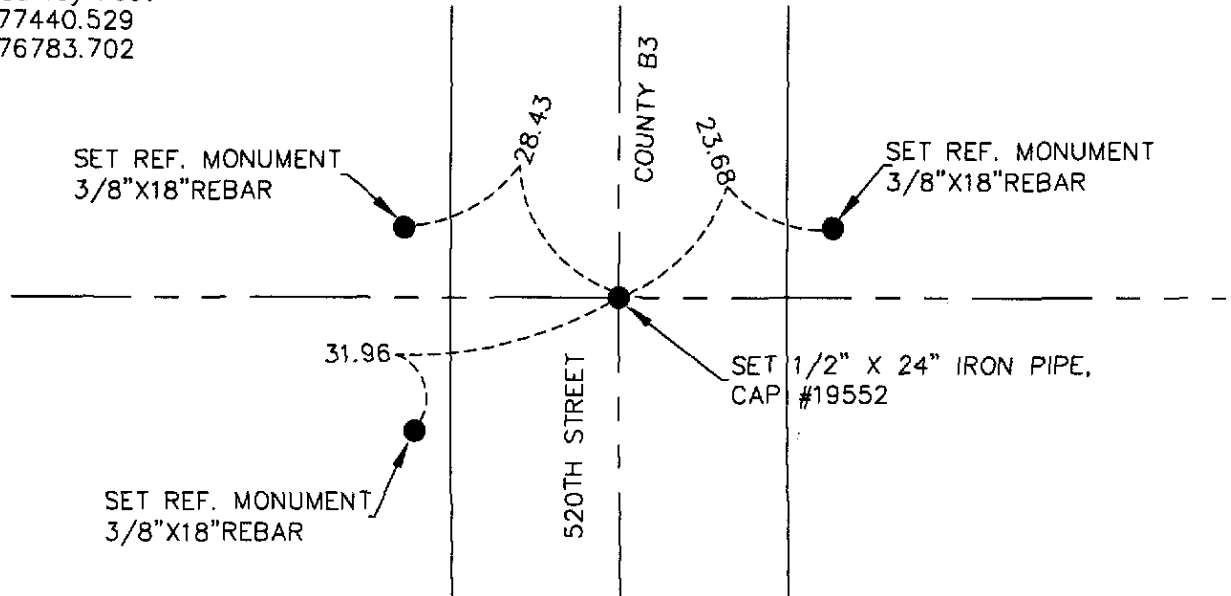
5th Principal Meridian, State of Minnesota, County of Yellow Medicine

At the corner location shown on the sketch:

- On 07/16/08 found a 3/4"X12" solid pin, charred wood post remains and 6"X8"16"
DATE
granite stone
- left monument as found lowered monument removed monument (explain)
- On 07/16/08 placed a 1/2"x24" iron pipe, cap #19552 over wood post and set three
DATE
reference ties

SKETCH OF REFERENCE TIES

1983 NAD(1996adj.)
 Yellow Medicine County Coordinates
 US Survey Feet
 N 177440.529
 E 576783.702



N.T.S.

Statement of evidence for this corner location is on back of this page.

I hereby certify that this document was researched and prepared by me or under my direct supervision and that I am a licensed Land Surveyor under the laws of the State of Minnesota.

Craig W. Miller

Signature _____

Date 07/31/08 License No. 23021

Title:

- Land Surveyor Professional Engineer
- County Surveyor County Engineer

OFFICE OF THE COUNTY RECORDER

County of _____

I hereby certify that this document was filed in the Co.

Records office at _____ M. on the _____ day of _____ A.D. 20_____

County Recorder _____

by _____, Deputy

DOCUMENT NO. _____

STATEMENT OF EVIDENCE:

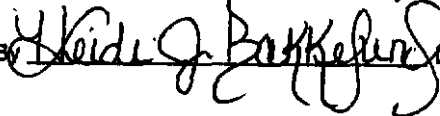
EAST QUARTER CORNER SECTION 24, T115N, R40W, 5TH PM

On July 16, 2008 Westwood Professional Services, Inc. dug with a backhoe and found 3/4"X12" solid pin, charred wood post and a 6"X8"X16" granite stone. We set 1/2"X24" iron pipe cap number 19552 just below road surface and over wood post along with three reference monuments, 3/8" X 18" rebar.

N/C
WESTWOOD PROFESSIONAL
SERVICES
7699 ANAGRAM DR
EDEN PRAIRIE MN 55344

Doc# 246197 Fee: \$0.00 2 Pages
Office of County Recorder
Yellow Medicine County, Minnesota
I hereby certify that the within instrument
was filed on August 6, 2008 at 10:35 AM

Kay Zempel, Yellow Medicine County Recorder

By  Deputy