

CERTIFICATE OF LOCATION OF GOVERNMENT CORNER

Northeast Corner of Section 25, Township 115N, Range 40W

5th Principal Meridian, State of Minnesota, County of Yellow Medicine

At the corner location shown on the sketch:

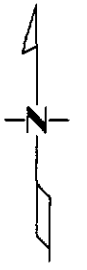
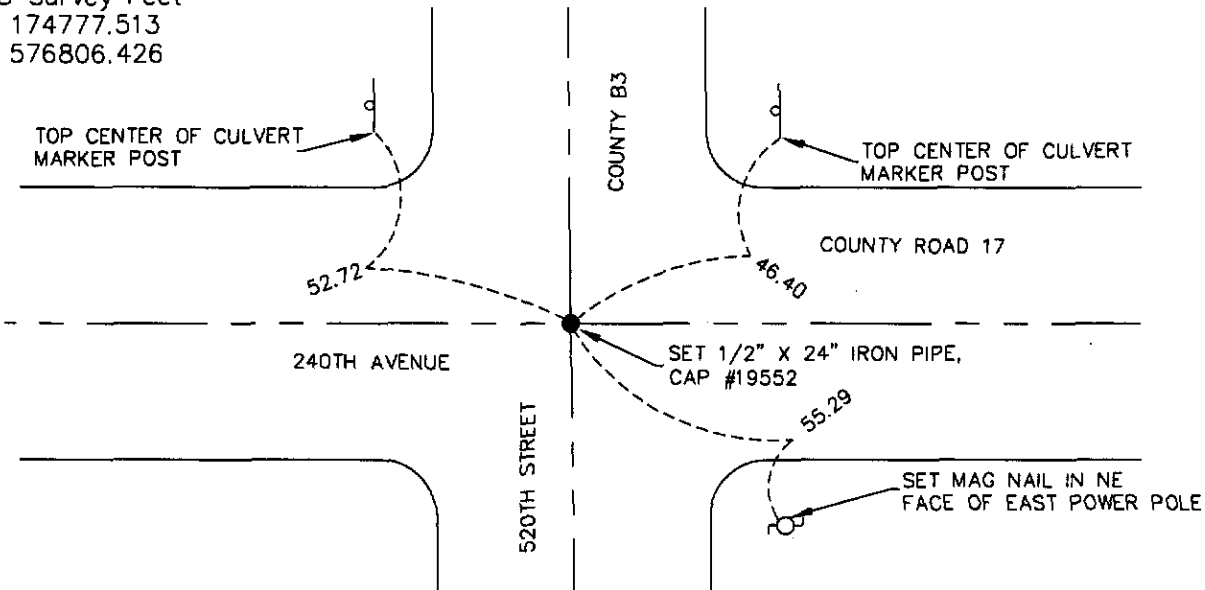
On 07/16/08 found a 6"X6"X18" red granite stone, 2.8' below road surface
DATE

left monument as found lowered monument removed monument (explain)

On 07/16/08 placed a 1/2"X24" Iron pipe cap #19552 just below road surface
DATE
and over stone along with three reference ties

SKETCH OF REFERENCE TIES

1983 NAD(1996adj.)
Yellow Medicine County Coordinates
US Survey Feet
N 174777.513
E 576806.426



Statement of evidence for this corner location is on back of this page.

I hereby certify that this document was researched and prepared by me or under my direct supervision and that I am a licensed Land Surveyor under the laws of the State of Minnesota.

Signature _____

Date 07/31/08 License No. 23021

Title:

- Land Surveyor Professional Engineer
- County Surveyor County Engineer

OFFICE OF THE COUNTY RECORDER

County of _____

I hereby certify that this document was filed in the Co.

Records office at _____ M. on the _____ day of _____ A.D. 20_____

County Recorder _____

by _____, Deputy

DOCUMENT NO. _____

STATEMENT OF EVIDENCE:

NORTHEAST CORNER SECTION 25, T115N, R40W, 5TH PM

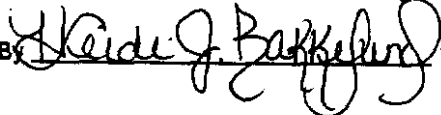
On July 16, 2008 Westwood Professional Services, Inc. dug with a backhoe and found 6"X6"X18" red granite stone, 2.8' below road surface along with a 12" spike, 3/8"X24" rebar twisted, 60D spike and a wood hub on north side of stone. We set 1/2"X24" Iron pipe, cap number 19552 over stone and 6" below road surface. We set three reference monuments, one mag nail in power pole and tie distance to two culvert marker posts.

N/C
WESTWOOD PROFESSIONAL
SERVICES
7699 ANAGRAM DR
EDEN PRAIRIE MN 55344

Doc# 246198 Fee: \$0.00 2 Pages

Office of County Recorder
Yellow Medicine County, Minnesota
I hereby certify that the within instrument
was filed on August 6, 2008 at 10:40 AM

Kay Zempel, Yellow Medicine County Recorder

By  Deputy