

CERTIFICATE OF LOCATION OF GOVERNMENT CORNER

East Quarter _____ Corner of Section 25, Township 115N, Range 40W

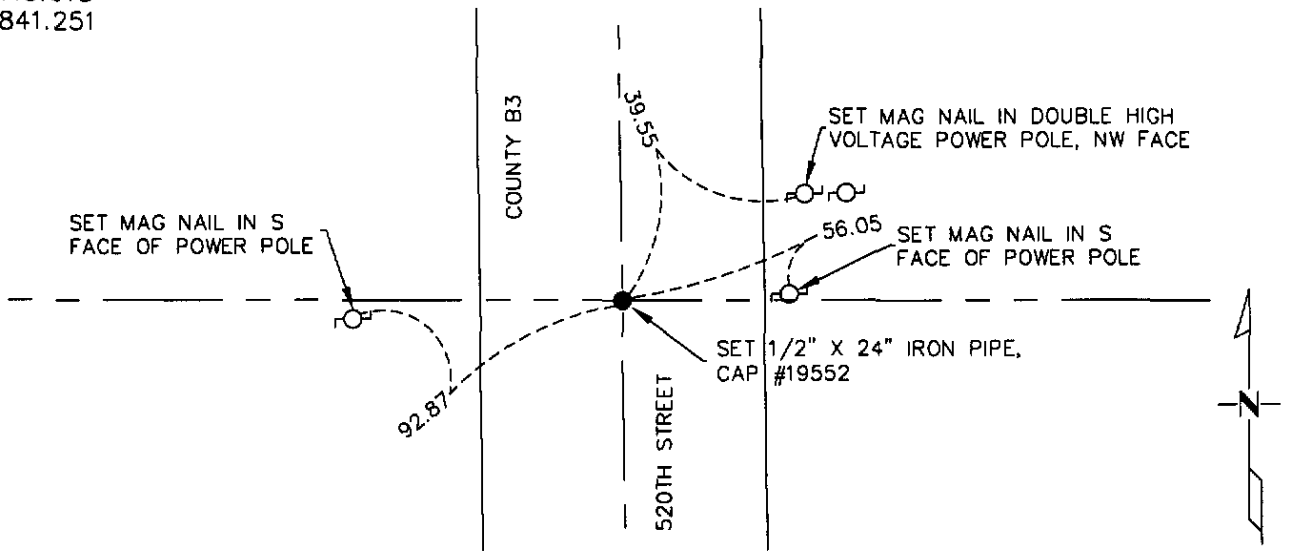
5th Principal Meridian, State of Minnesota, County of Yellow Medicine

At the corner location shown on the sketch:

- On 07/16/08 found a nothing
DATE
- left monument as found lowered monument removed monument (explain)
- On 07/16/08 placed a 1/2"X24" Iron pipe cap #19552 set by single proportion
DATE
 along with three reference ties

SKETCH OF REFERENCE TIES

1983 NAD(1996adj.)
 Yellow Medicine County Coordinates
 US Survey Feet
 N 172116.018
 E 576841.251



N.T.S.

Statement of evidence for this corner location is on back of this page.

I hereby certify that this document was researched and prepared by me or under my direct supervision and that I am a licensed Land Surveyor under the laws of the State of Minnesota.

Signature _____

Date 07/31/08 License No. 23021

Title:

- Land Surveyor Professional Engineer
- County Surveyor County Engineer

OFFICE OF THE COUNTY RECORDER

County of _____

I hereby certify that this document was filed in the Co.

Records office at _____, M. on the _____ day of _____ A.D. 20_____

County Recorder _____

by _____, Deputy

DOCUMENT NO. _____

STATEMENT OF EVIDENCE:

EAST QUARTER CORNER SECTION 25, T115N R40W, 5TH PM

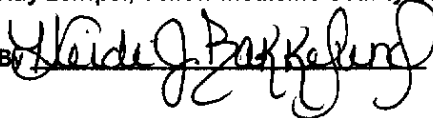
On July 16, 2008 Westwood Professional Services, Inc. dug with a backhoe and found nothing, County Highway Dept. acknowledged digging for this corner and not finding any evidence. We set 1/2"X24" Iron pipe cap number 19552 by single proportion along with three reference monuments, mag nails in three power poles.

N/C
WESTWOOD PROFESSIONAL
SERVICES
7699 ANAGRAM DR
EDEN PRAIRIE MN 55344

Doc# 246199 Fee: \$0.00 2 Pages

Office of County Recorder
Yellow Medicine County, Minnesota
I hereby certify that the within instrument
was filed on August 6, 2008 at 10:45 AM

Kay Zempel, Yellow Medicine County Recorder

By  Deputy