

CERTIFICATE OF LOCATION OF GOVERNMENT CORNER

Northeast _____ Corner of Section 23, Township 115N, Range 40W

5th Principal Meridian, State of Minnesota, County of Yellow Medicine

At the corner location shown on the sketch:

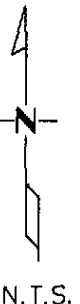
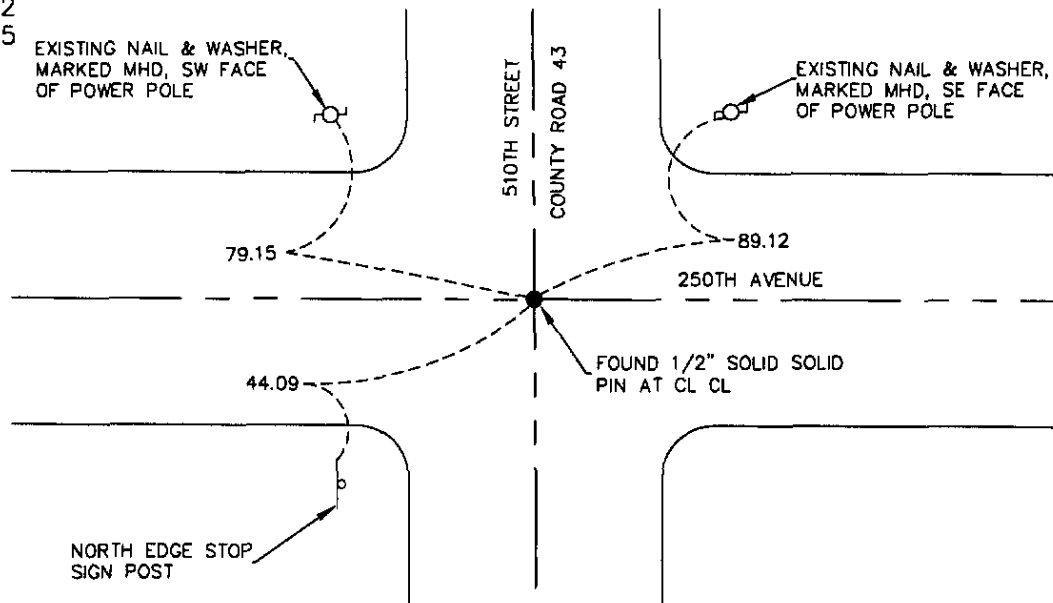
- On 07/16/08 found a 1/2" solid pin at CL CL
DATE

- left monument as found lowered monument removed monument (explain)

- On 07/16/08 placed a set three reference ties
DATE

SKETCH OF REFERENCE TIES

1983 NAD(1996adj.)
Yellow Medicine County Coordinates
US Survey Feet
N 180106.142
E 571481.805



Statement of evidence for this corner location is on back of this page.

I hereby certify that this document was researched and prepared by me or under my direct supervision and that I am a licensed Land Surveyor under the laws of the State of Minnesota.

[Handwritten Signature]

Signature _____

Date 07/31/08 License No. 23021

Title:

- Land Surveyor Professional Engineer
- County Surveyor County Engineer

OFFICE OF THE COUNTY RECORDER

County of _____

I hereby certify that this document was filed in the Co.

Records office at _____ M. on the _____ day of _____ A.D. 20____

County Recorder _____

by _____, Deputy

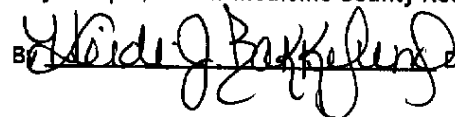
DOCUMENT NO. _____

N/C
WESTWOOD PROFESSIONAL
SERVICES
7699 ANAGRAM DR
EDEN PRAIRIE MN 55344

Doc# 246200 Fee: \$0.00 2 Pages

Office of County Recorder
Yellow Medicine County, Minnesota
I hereby certify that the within instrument
was filed on August 6, 2008 at 10:50 AM

Kay Zempel, Yellow Medicine County Recorder


By Heidi J. Burkholder Deputy