

CERTIFICATE OF LOCATION OF GOVERNMENT CORNER

Northeast Corner of Section 26, Township 115N, Range 40W

5th Principal Meridian, State of Minnesota, County of Yellow Medicine

At the corner location shown on the sketch:

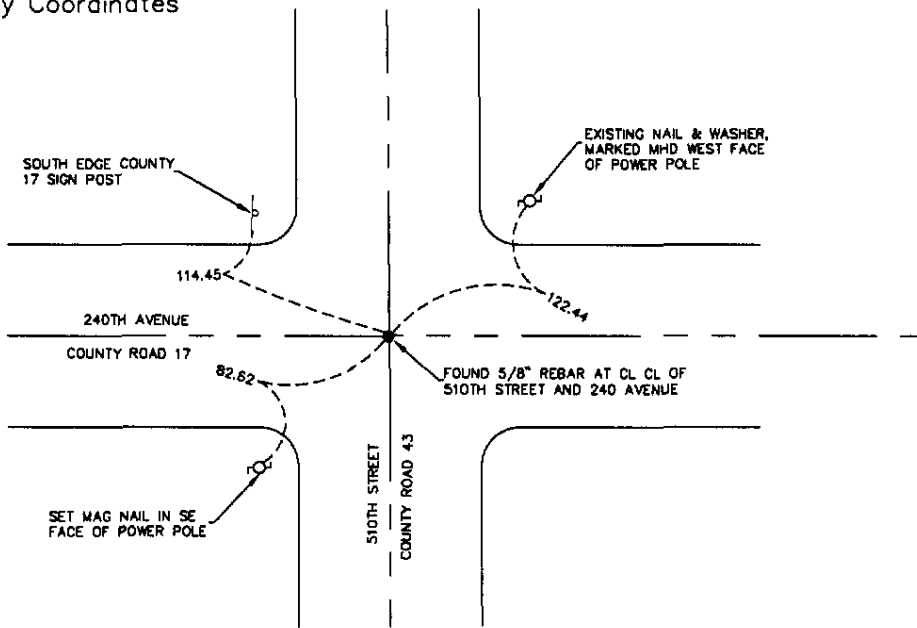
On 07/16/08 found a 5/8" rebar at CL CL of 510TH Street and 240Th Avenue
DATE

left monument as found lowered monument removed monument (explain)

On 07/16/08 placed a set new reference ties
DATE

SKETCH OF REFERENCE TIES

1983 NAD(1996adj.)
Yellow Medicine County Coordinates
US Survey Feet
N 174780.079
E 571513.413



N.T.S.

Statement of evidence for this corner location is on back of this page.

I hereby certify that this document was researched and prepared by me or under my direct supervision and that I am a licensed Land Surveyor under the laws of the State of Minnesota.

Signature *Cory W. Mann*

Date 07/31/08 License No. 23021

Title:

- Land Surveyor Professional Engineer
- County Surveyor County Engineer

OFFICE OF THE COUNTY RECORDER

County of _____

I hereby certify that this document was filed in the Co.

Records office at _____ M. on the _____ day of _____ A.D. 20____

County Recorder _____

by _____, Deputy

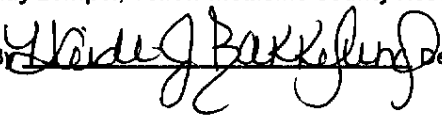
DOCUMENT NO. _____

N/C
WESTWOOD PROFESSIONAL
SERVICES
7699 ANAGRAM DR
EDEN PRAIRIE MN 55344

Doc# 246201 Fee: \$0.00 2 Pages

Office of County Recorder
Yellow Medicine County, Minnesota
I hereby certify that the within instrument
was filed on August 6, 2008 at 10:55 AM

Kay Zempel, Yellow Medicine County Recorder

By  Deputy