

Office of County Recorder
Yellow Medicine County, Minnesota
I hereby certify that the within instrument
was filed on September 17, 2008 at 9:40 AM

Kay Zempel, Yellow Medicine County Recorder

By Heidi G. Bakkelund Deputy

N/C DANIEL G. NICKOLS, PLS
DNR DIVISION OF LANDS AND MINERALS
MINNESOTA DEPARTMENT OF NATURAL RESOURCES
500 LAFAYETTE ROAD
ST PAUL MN 55155-4037

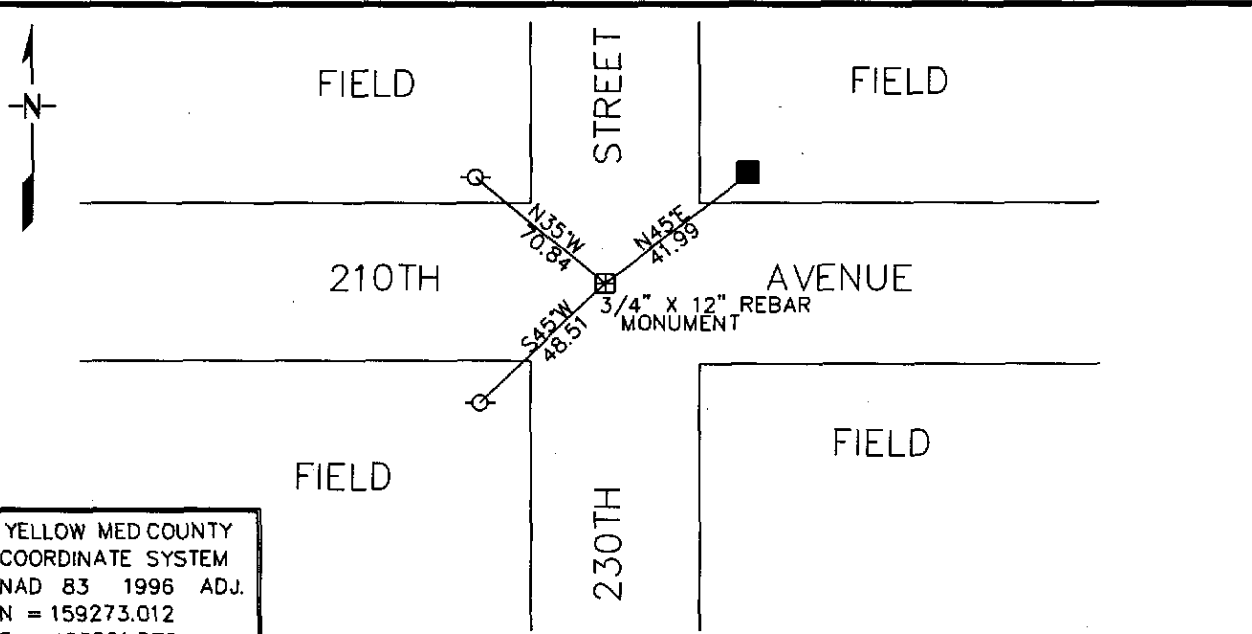
Index No. _____

CERTIFICATE OF LOCATION OF GOVERNMENT CORNER

NORTHEAST Corner of Section 7, Township 114, Range 44
5TH Principal Meridian, State of Minnesota, County of YELLOW MEDICINE

At the corner location shown on the sketch:

- On 8/5/2008 found a 1/2" X 24" REBAR MARKED HURD AERIAL (REMOVED)
DATE
DUG WITH BACKHOE FOUND 6"x6" CUT GRANITE MON DOWN 1.5'
 left monument as found, lowered monument, removed monument (explain)
- On 8/5/2008 Placed a 3/4" X 12" REBAR WITH PLASTIC CAP MARKED DNR
DATE
LS 19839. DID NOT REPLACE HURD MONUMENT



YELLOW MED COUNTY
COORDINATE SYSTEM
NAD 83 1996 ADJ.
N = 159273.012
E = 423201.570

Statement of evidence for this corner location is on back of this page.

9/12/2008

I certify that this document was researched and prepared by me or under my direct supervision.

SIGNATURE Daniel G. Nickols DATE 9/15/2008 License Number 19839

Title: Land Surveyor Professional Engineer County Surveyor County Engineer

Statement of Evidence for the Northeast Corner of Section 7, Township 114 North,
Range 44 West of the 5th Principal Meridian.

- 1858 The subject corner was established by L. Harrington. His notes state that he ran North on true line between Sections 7 & 12 and at 40.00 Chains he set a quarter section post, deposited coal, made mound, trench and pits per instructions. At 80.00 chains he set the corner post common to sections 1, 6, 7 & 12, deposited coal made mound, trench and pits as per instructions.
- 1892 Yellow Medicine County Surveyor, Johan Peterman. He states that he found all Government Corners and that he strictly followed all rules of survey. No reference ties are indicated on this Survey. At the subject corner he states setting a field stone.
- 1901 Yellow Medicine County Surveyor, John Norgaard indicates: Found stone in the Government mound. Set monument 2" above ground. No reference ties to the corner are shown.
- Undated Yellow Medicine County Highway Department indicates reference ties to the subject corner as follows:
- | | |
|-------------------|-------|
| Cor Fence Post NE | 46.5' |
| 15" Poplar SE | 78' |
- 2008 Field Crew from Minnesota Department of Natural Resources (DNR) found a 1/2" X 24" Rebar with a plastic cap marked Hurd Aerial. The rebar was removed and a 6" X 6" cut stone was recovered 18" below the surface. A 3/4" X 12" rebar with plastic cap marked 19839 was placed over the stone. No Previous reference ties were recovered
- Markhurd was contacted concerning the found rebar. Their survey operations have ceased and they were unable to recover the records of the placement of the rebar.

I have decided to accept the position of the found stone as a perpetuation of the original corner position established by the GLO.