

Office of County Recorder
Yellow Medicine County, Minnesota
I hereby certify that the within instrument
was filed on September 17, 2008 at 9:45 AM

Kay Zempel, Yellow Medicine County Recorder

By Heidi Pakkela Deputy

N/C DANIEL G. NICKOLS, PLS
DNR DIVISION OF LANDS AND MINERALS
MINNESOTA DEPARTMENT OF NATURAL RESOURCES
500 LAFAYETTE ROAD
ST PAUL MN 55155-4037

Index No. _____

CERTIFICATE OF LOCATION OF GOVERNMENT CORNER

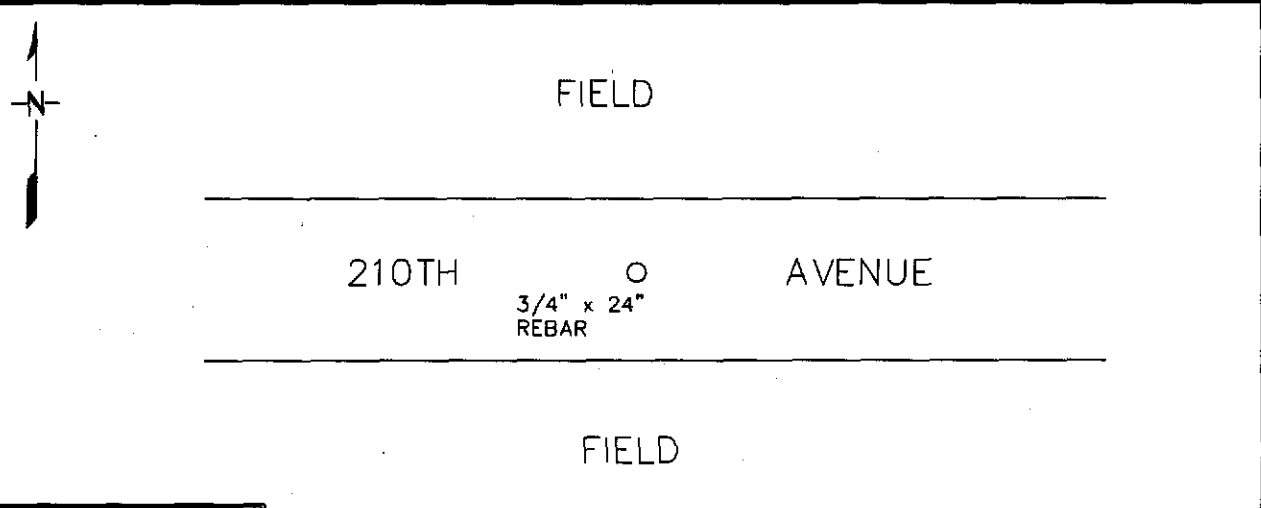
NORTH QUARTER Corner of Section 7 ,Township 114 ,Range 44
5TH Principal Meridian, State of Minnesota, County of YELLOW MEDICINE

At the corner location shown on the sketch:

On 8/5/2008 found a 8" X 7" X 6" FIELD STONE DOWN 18"
DATE

left monument as found, lowered monument, removed monument (explain)

On 8/5/2008 Placed a 3/4" X 24" REBAR WITH PLASTIC CAP MARKED
DATE
MN DNR LS 19839. DOWN 0.3' REPLACED STONE DOWN 28"



YELLOW MED COUNTY
COORDINATE SYSTEM
NAD 83 1996 ADJ.
N = 159293.362
E = 420548.492

Statement of evidence for this corner location is on back of this page. 9/12/2008

I certify that this document was researched and prepared by me or under my direct supervision.

SIGNATURE Daniel G. Nickols DATE 9/15/2008 License Number 19839

Title: Land Surveyor Professional Engineer County Surveyor County Engineer

Statement of Evidence for the North Quarter Corner of Section 7, Township 114
North, Range 44 West of the 5th Principal Meridian.

- 1871 The subject corner was established by L. Harrington. His notes state that he ran West on a random line between Sections 6 & 7 and at 40.00 chains he set a temporary quarter section post. At 80.10 chains he intersected the west boundary of the Township 10 line south of the corner. He then ran east on true line and set the quarter post being a raised mound as per instructions.
- 1892 Yellow Medicine County Surveyor, Johan Peterman. He states that he found all Government Corners and that he strictly followed all rules of survey. No reference ties are indicated on this Survey. For the subject corner he indicates setting a stone. No reference ties were recorded.
- 2008 Field Crew from Minnesota Department of Natural Resources (DNR) excavated with a backhoe and found a stone down 18". Stone was removed and excavation continued an additional 4 feet. No additional evidence recovered. Stone was reset in original location at a depth of 28" and a ½" X 24" Rebar was placed on the north side of the stone. Set ¾" Rebar with plastic cap marked 19839 over the stone.

I have decided to accept the position of the found stone as a perpetuation of the original corner position established by the GLO.