

Office of County Recorder
Yellow Medicine County, Minnesota
I hereby certify that the within instrument
was filed on September 17, 2008 at 9:50 AM

Kay Zempel, Yellow Medicine County Recorder

By Heidi Bakkefjord Deputy

N/C DANIEL G. NICKOLS, PLS
DNR DIVISION OF LANDS AND MINERALS
MINNESOTA DEPARTMENT OF NATURAL RESOURCES
500 LAFAYETTE ROAD
ST PAUL MN 55155-4037

Index No. _____

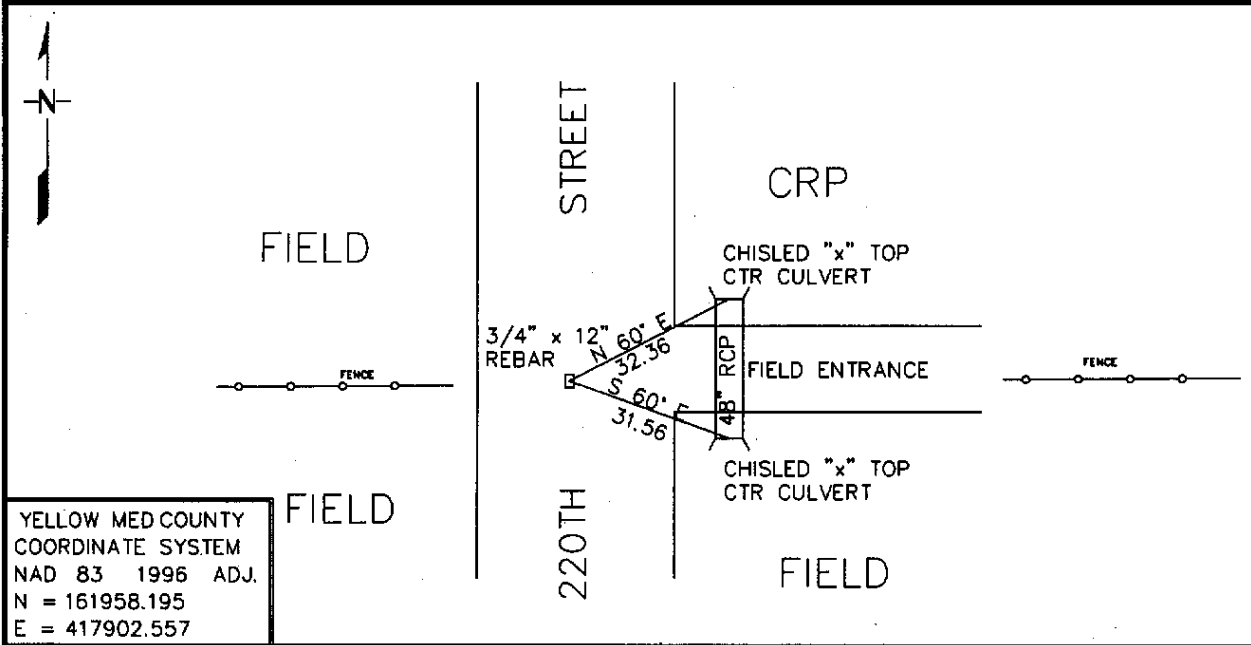
CERTIFICATE OF LOCATION OF GOVERNMENT CORNER

WEST QUARTER Corner of Section 6, Township 114, Range 44

5TH Principal Meridian, State of Minnesota, County of YELLOW MEDICINE

At the corner location shown on the sketch:

- On 8/5/2008 found a 1/2" X 2.5" IRON BAR WITH COW BONE DOWN 3'
DATE
- left monument as found, lowered monument, removed monument (explain)
- On 8/5/2008 Placed a 3/4" X 24" REBAR WITH PLASTIC CAP MARKED
DATE
MN DNR LS 19839, DOWN 0.3' ABOVE FOUND BAR



YELLOW MED COUNTY
COORDINATE SYSTEM
NAD 83 1996 ADJ.
N = 161958.195
E = 417902.557

Statement of evidence for this corner location is on back of this page.

9/12/2008

I certify that this document was researched and prepared by me or under my direct supervision.

SIGNATURE Daniel G. Nickols DATE 9/15/2008 License Number 19839

Title: Land Surveyor Professional Engineer County Surveyor County Engineer

Statement of Evidence for the West Quarter Corner of Section 6, Township 114
North, Range 44 West of the 5th Principal Meridian.

- 1858 The subject corner was established by W. J. Neely. His notes state that he ran North on true line between Sections 7 & 12 and at 40.00 Chains he set a quarter section post, deposited coal, made mound, trench and pits per instructions. At 80.00 chains he set the corner post common to sections 1, 6, 7 & 12, deposited coal made mound, trench and pits as per instructions.
- 2008 Field Crew from Minnesota Department of Natural Resources (DNR) excavated with a backhoe and found a ½" X 0.2' Iron Bar down 36" in road bed. Also found Knee Bone (Bovine?) next to bar. Iron bar was located 1' west of centerline of road and 2' South of fence line to the west.

I have decided to accept the position of the found Iron Bar as a perpetuation of the original corner position established by the GLO.