

Office of County Recorder
Yellow Medicine County, Minnesota
I hereby certify that the within instrument
was filed on September 17, 2008 at 9:55 AM

Kay Zempel, Yellow Medicine County Recorder

By Heidi J. Bakkelung Deputy

N/C DANIEL G. NICKOLS, PLS
DNR DIVISION OF LANDS AND MINERALS
MINNESOTA DEPARTMENT OF NATURAL RESOURCES
500 LAFAYETTE ROAD
ST PAUL MN 55155-4037

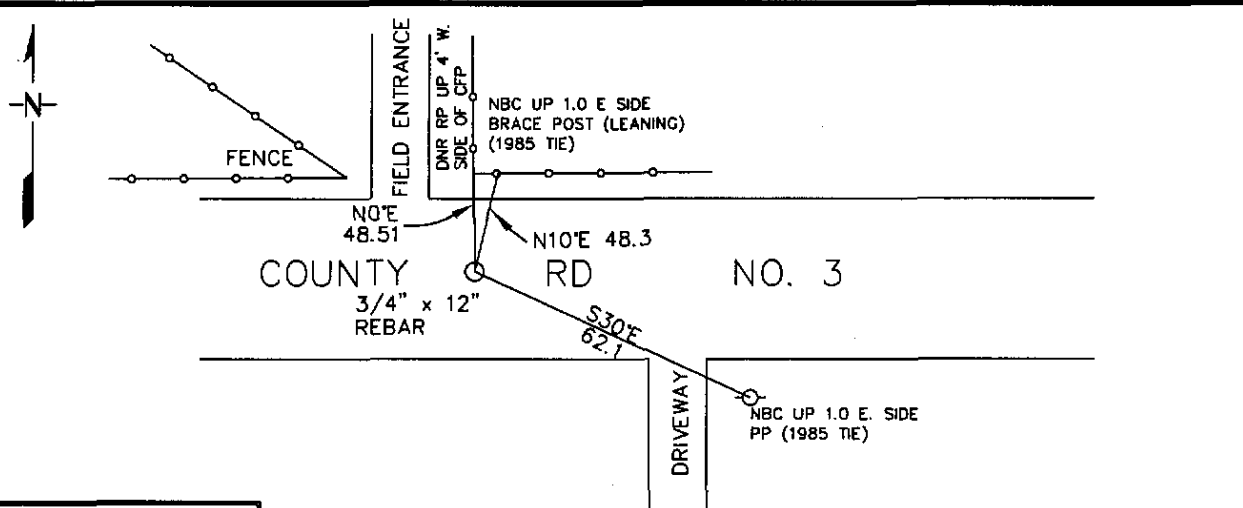
Index No. _____

CERTIFICATE OF LOCATION OF GOVERNMENT CORNER

NORTH QUARTER Corner of Section 6 ,Township 114 ,Range 44
5TH Principal Meridian, State of Minnesota, County of YELLOW MEDICINE

At the corner location shown on the sketch:

- On 8/5/2008 found a 1/2" x 18" CARRIAGE BOLT DOWN 0.30' FIT HWY DEPT
DATE TIES FROM 1985
 left monument as found, lowered monument, removed monument (explain)
- On 8/5/2008 Placed a 3/4" X 12" REBAR WITH PLASTIC CAP MARKED
DATE MN DNR LS 19839. DOWN 0.2' REPLACING BOLT



YELLOW MED COUNTY
COORDINATE SYSTEM
NAD 83 1996 ADJ.
N = 164578.270
E = 420546.463

Statement of evidence for this corner location is on back of this page.

9/12/2008

I certify that this document was researched and prepared by me or under my direct supervision.

SIGNATURE Daniel G. Nickols DATE 9/15/2008 License Number 19839

Title: Land Surveyor Professional Engineer County Surveyor County Engineer

Statement of Evidence for the North Quarter Corner of Section 6, Township 114
North, Range 44 West of the 5th Principal Meridian.

1858 The subject corner was established by W. J. Neely. His notes state that he ran west on true line between Sections 6 & 31 and at 40.00 Chains he set a quarter section post, deposited coal, made mound, trench and pits per instructions. At 79.25Chain he encountered the Township Corner.

1948 Yellow Medicine County Highway Department records indicate four reference ties to the corner being:

3 rd Fence Post North	64.3'
Power Pole SE	61.0'
Brace Pole SW	43.3'
3 rd Fence Post South	58.8'

No description of a monument is given within this record.

1985 Yellow Medicine County Highway Department records indicate:
Found Field Stone down 1.0' and the following reference ties:

Brace Fence Post NE	48.65'
Brace Fence Post NW	54.47'
Power Pole SE	62.10'

2008 Field Crew from Minnesota Department of Natural Resources (DNR) found a ½" X 18" carriage bolt down 0.3'. The bolt fit the 1985 tie to the power pole SE and closely matched the tie to the brace fence post NE that was now leaning.

I have decided to accept the position of the found carriage bolt as a perpetuation of the original corner position established by the GLO as the bolt fits the 1985 ties that reference a stone monument.