

Office of County Recorder
Yellow Medicine County, Minnesota
I hereby certify that the within instrument
was filed on September 17, 2008 at 10:00 AM

Kay Zempel, Yellow Medicine County Recorder

By Heidi J. Bakke Deputy

N/C DANIEL G. NICKOLS, PLS
DNR DIVISION OF LANDS AND MINERALS
MINNESOTA DEPARTMENT OF NATURAL RESOURCES
500 LAFAYETTE ROAD
ST PAUL MN 55155-4037

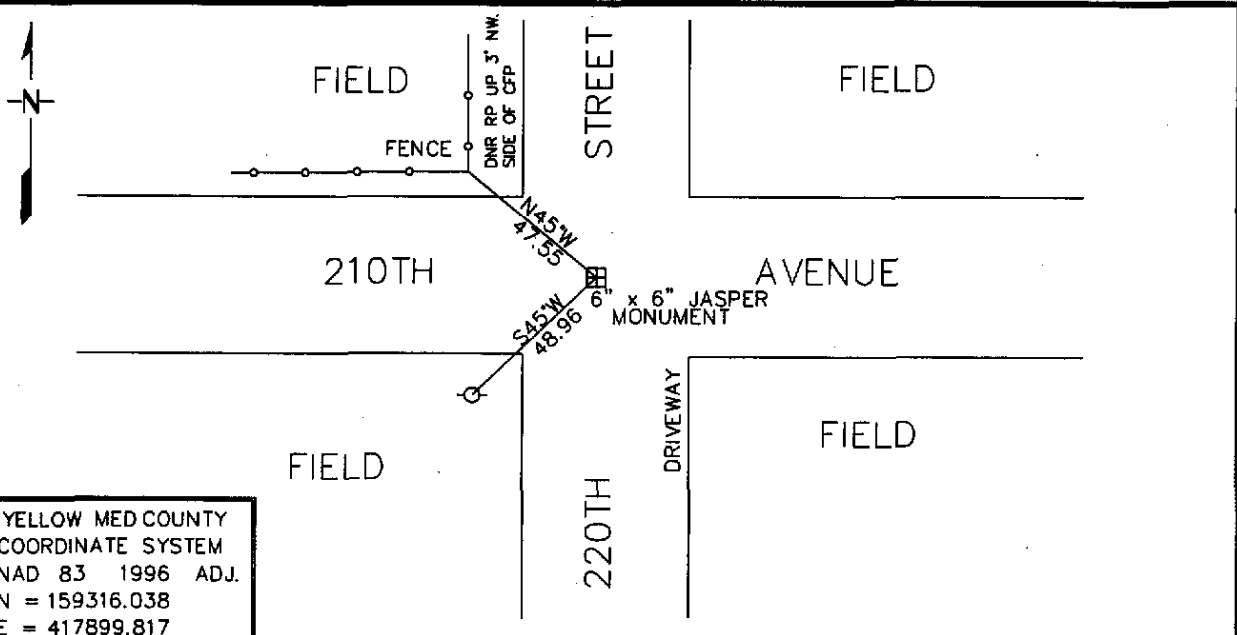
Index No. _____

CERTIFICATE OF LOCATION OF GOVERNMENT CORNER

SOUTHWEST Corner of Section 6, Township 114, Range 44
5TH Principal Meridian, State of Minnesota, County of YELLOW MEDICINE

At the corner location shown on the sketch:

- On 8/5/2008 found a 1/2" x 18" REBAR MARKED 19092 (REMOVED) DUG
DATE
WITH BACKHOE FOUND 6"x6" JASPER MON DOWN 0.6'
 left monument as found, lowered monument, removed monument (explain)
- On 8/5/2008 Placed a 1/2" X 18" REBAR ON NORTH SIDE STONE
DATE
DID NOT REPLACE FOUND REBAR



YELLOW MED COUNTY
COORDINATE SYSTEM
NAD 83 1996 ADJ.
N = 159316.038
E = 417899.817

Statement of evidence for this corner location is on back of this page. 9/12/2008

I certify that this document was researched and prepared by me or under my direct supervision.
SIGNATURE Daniel G. Nickols DATE 9/15/2008 License Number 19839
Title: Land Surveyor Professional Engineer County Surveyor County Engineer

Statement of Evidence for the Southwest Corner of Section 6, Township 114 North,
Range 44 West of the 5th Principal Meridian.

- 1858 The subject corner was established by W. J. Neely. His notes state that he ran North on true line between Sections 7 & 12 and at 40.00 Chains he set a quarter section post, deposited coal, made mound, trench and pits per instructions. At 80.00 chains he set the corner post common to sections 1, 6, 7 & 12, deposited coal made mound, trench and pits as per instructions.
- 1892 Yellow Medicine County Surveyor, Johan Peterman. He states that he found all Government Corners and that he strictly followed all rules of survey. No reference ties are indicated on this Survey.
- 1901 Yellow Medicine County Surveyor, John Norgaard indicates: Found stone in the center of road running east and west. Said by adjoining land owner to be the original Government Corner. Set monument level with ground. No reference ties to the corner are shown.
- Undated MN Land Surveyor Roy Marihart, License Number 19092 set ½" X 18" rebar with cap by stone.
- 2008 Field Crew from Minnesota Department of Natural Resources (DNR) found a ½" X 18" Rebar with a plastic cap marked 19092. The rebar was removed and a 6" X 6" cut stone was recovered below the rebar. A ½" X 18" rebar was placed on north edge of stone.

I have decided to accept the position of the found stone as a perpetuation of the original corner position established by the GLO.