

Office of County Recorder
Yellow Medicine County, Minnesota
I hereby certify that the within instrument
was filed on September 17, 2008 at 10:05 AM

Kay Zempel, Yellow Medicine County Recorder

By Heidi G. Kerkling Deputy

N/C DANIEL G. NICKOLS, PLS
DNR DIVISION OF LANDS AND MINERALS
MINNESOTA DEPARTMENT OF NATURAL RESOURCES
500 LAFAYETTE ROAD
ST PAUL MN 55155-4037

Index No. _____

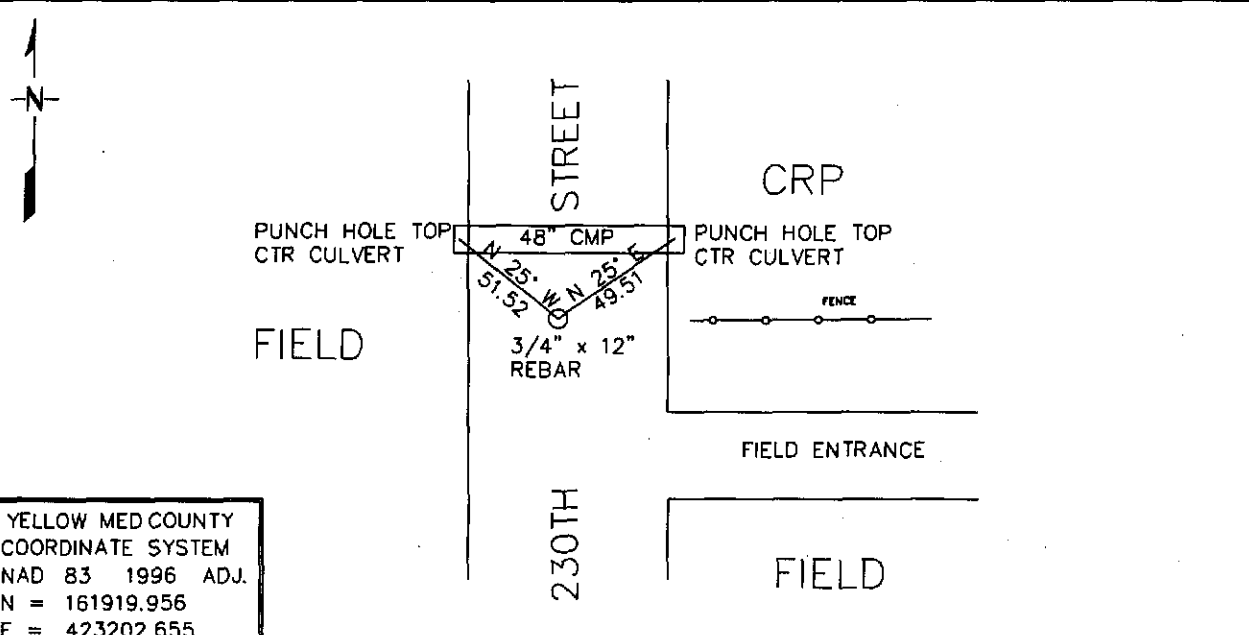
CERTIFICATE OF LOCATION OF GOVERNMENT CORNER

EAST QUARTER Corner of Section 6, Township 114, Range 44

5TH Principal Meridian, State of Minnesota, County of YELLOW MEDICINE

At the corner location shown on the sketch:

- On 8/5/2008 found a 12" X 8" X 8" STONE DOWN 16"
DATE
- left monument as found, lowered monument, removed monument (explain)
- On 8/5/2008 Placed a 3/4" X 12" REBAR WITH PLASTIC CAP MARKED
DATE
MN DNR LS 19839, DOWN 0.2' OVER STONE



Statement of evidence for this corner location is on back of this page. 9/12/2008

I certify that this document was researched and prepared by me or under my direct supervision.
SIGNATURE Daniel G. Nickols DATE 9/15/2008 License Number 19839
Title: Land Surveyor Professional Engineer County Surveyor County Engineer

Statement of Evidence for the East Quarter Corner of Section 6, Township 114 North,
Range 44 West of the 5th Principal Meridian.

1871 The subject corner was established by L. Harrington. His notes state that he ran north on random line between Sections 5 & 6 and at 40.00 chains he set a temporary $\frac{1}{4}$ Cor, at 54.00 chains he encountered the Lac Qui Parle River at 79.00 chains he intersected the north line of the Township, He returned south on true line and at 39.00 chains set a quarter section post, and made mound per instructions. No ties were taken at either corner.

2008 Field Crew from Minnesota Department of Natural Resources (DNR) excavated with a backhoe and down 16" found a 12" X 8" X 8" Stone. Natural ground was encountered at 14". No other monument was found. Reset stone in found position and placed a $\frac{3}{4}$ " X 12" Rebar with plastic cap marked 19839 over stone.

I have decided to accept the position of the found Stone as a perpetuation of the original corner position established by the GLO.