

N/c

Prepared by: Zieske Land Surveying, Inc. Address: Box 94, Windom, MN 56101 Phone: (507) 831-0100

UNITED STATES PUBLIC LAND SURVEY CORNER CERTIFICATE FOR

Land survey monuments situated in Section 4, Township 114 North, Range 38 West, of the Fifth Principal Meridian, Yellow Medicine County, Minnesota..

Previously recorded in N/A in County Recorder's Office.

(Show reason for preparing this certificate, the evidence and detailed procedure used in establishing the corner position & monumentation found or placed.)

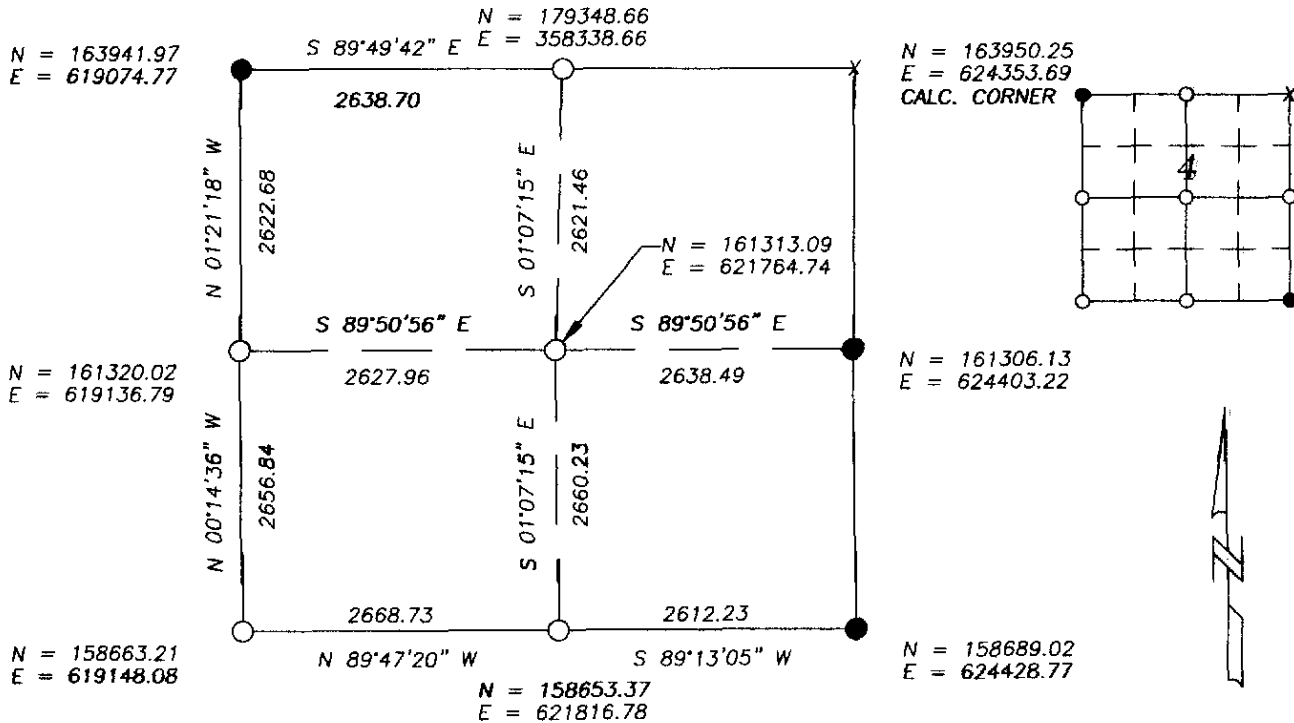
MONUMENT DESCRIPTION AND REMARKS: On June 3, 2008 we dug with backhoe for North 1/4 Corner,

West 1/4 Corner & East 1/4 Corner. Original Public Land survey run in 1864 indicates a post set in a mound with pits to mark the corners. In 1883 County Surveyor Jonah Peterman from Pg. 17 in Survey Record book said he found all of Section 4 1/4 posts. We found pile of 12" rocks with wood on South side for N 1/4 Corner at \varnothing Twp. Road & 4' East at fence to South. Accepted stone as corner & placed a survey marker spike with disk 23008. We found a 12" X 15" stone 2' below surface at approximate \varnothing old roadbed in line with fence east & accepted stone as corner & placed a 1" Iron pipe with survey cap 23008 over top center of stone. We found no evidence at West 1/4 Corner and set 1" Iron pipe with survey cap 23008 at \varnothing Twp. Road in line with fence west and occupation east. This is practical location and fits

(over)

YELLOW MEDICINE COUNTY COORDINATES NAD 83 (1996)

PLAN-VIEW



I hereby certify that this land surveying document was prepared and related survey work was performed by me or under my direct supervision and that I am a duly licensed Land Surveyor under the laws of the State of Minnesota.

Perry L. Zieske 9-8-08
Signature Date

Perry Zieske
License number 23008

Sheet 1 of 1

Corners to be Indexed

Corners	Section	Township	Range
N 1/4	4	114	38
E 1/4	4	114	38
W 1/4	4	114	38
SW	4	114	38
S 1/4	4	114	38
CTR.	4	114	38

old survey book distance within 1 foot. The SW & S 1/4 Corner are in county road 18 bituminous surface
and we did not dig into bituminous road. We reset SW Corner and South 1/4 Corner as per Yellow Medicine
County Highway Plans, State Aid Project No. 87-618-18. We set a survey marker with disk 23008 at
corners in for accepted corners. The locations are on County Road 6 and fit occupation lines & Twp. Road
Centerline area. We also set a 1" Iron Pipe with survey cap 23008 at center of Section by intersecting
opposite 1/4 corners as per Public Land Surveying instructions.

Doc# 246438 Fee: \$0.00 2 Pages

Office of County Recorder

Yellow Medicine County, Minnesota

I hereby certify that the within instrument

was filed on September 17, 2008 at 10:10 AM

Kay Zempel, Yellow Medicine County Recorder

By Heidi Burkling Deputy