

Office of County Recorder
Yellow Medicine County, Minnesota
I hereby certify that the within instrument
was filed on December 11, 2008 at 9:30 AM

Kay Zempel, Yellow Medicine County Recorder

By Debra Blood Deputy

N/C DANIEL G. NICKOLS, PLS
DNR DIVISION OF LANDS AND MINERALS
MINNESOTA DEPARTMENT OF NATURAL RESOURCES
500 LAFAYETTE ROAD
ST PAUL MN 55155-4037

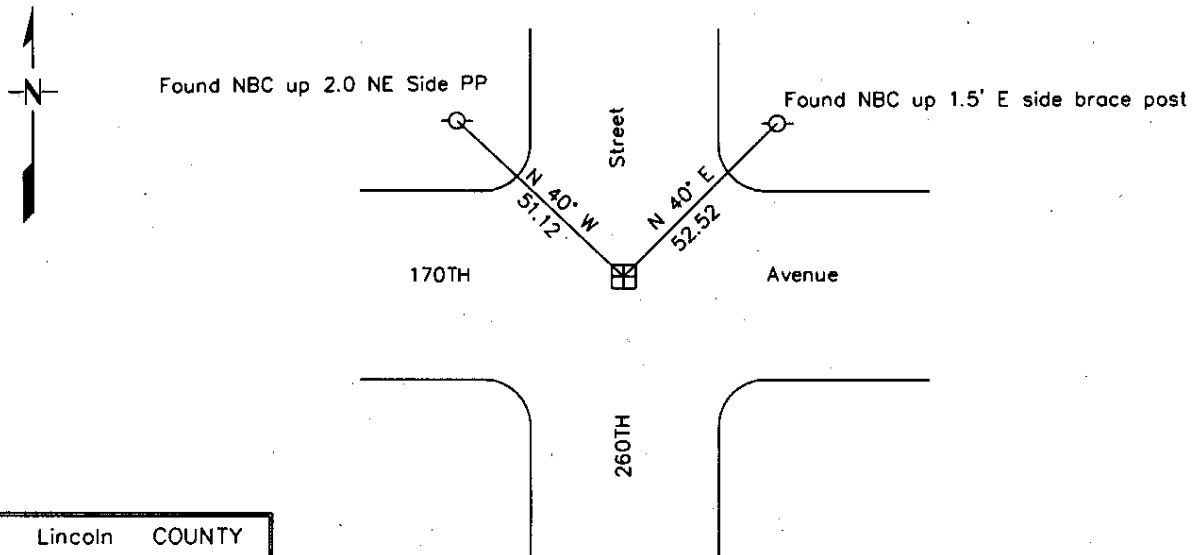
Index No. _____

CERTIFICATE OF LOCATION OF GOVERNMENT CORNER

Northeast Corner of Section 34, Township 114, Range 44
5th Principal Meridian, State of Minnesota, County of Yellow Medicine

At the corner location shown on the sketch:

- On 9/10/2008 found a 1/2" X 18" Iron Pipe Down 0.2', Found RR Spike Down 1.4'
DATE
Found 8" X 18" Stone Down 1.8'
 left monument as found, lowered monument, removed monument (explain)
- On 9/10/2008 Placed a RR Spike on west edge stone, Set 3/4" X 12" rebar
DATE
with a plastic cap marked MN DNR LS 19839 over stone



Lincoln COUNTY
COORDINATE SYSTEM
NAD 83 1996 ADJ.
N =
E =

Statement of evidence for this corner location is on back of this page.

October 2008
WMA00898.00.00.01

I certify that this document was researched and prepared by me or under my direct supervision.

SIGNATURE Daniel S. Nickols DATE 12/4/2008 License Number 19839

Title: Land Surveyor Professional Engineer County Surveyor County Engineer

Statement of Evidence for the Northeast Corner of Section 34, Township 114 North,
Range 44 West of the 5th Principal Meridian.

1871 The subject corner was established by L Harrington. His notes state that he ran north between Sections 34 & 35.

At 40.00 Chains he set a quarter section post and "Raised Mound as per instructions."

At 80.00 Chains he "Set Post for the corner to Sections 26, 27, 34 & 35 raised Mound as per instructions."

Neither Mr. Harrington's monument or accessories were found during our survey.

1903 County Surveyor John Norgarrd surveyed in Section 34. Notes indicate that he established the North, South and East Quarter Corners "on line and at equal distance between Sec. Corners. No mention of what was found or how the subject corner was established. Said survey shows distances along the North South and West lines and the south line of the NE ¼ of the Section.

1971 Surveyors from the Minnesota DNR found a stone at the location of the corner and took the following ties:

Bottle Cap in PP	NW	51.30'
Bottle Cap in Brace Pole	NE	52.60'

2008 Field Crew from Minnesota Department of Natural Resources (DNR) excavated the corner location with the aid of a backhoe. Found ½" X 18" iron pipe (down 0.2'); Found Railroad spike at old road grade (down 1.4'); Found 8" X 8" Field Stone (down 1.8'). Set RR Spike on west edge of Stone; Set ¾" X 12" Rebar with Plastic Cap marked #19839 over stone (down 0.3'). Said found monuments fit the ties from the 1971 survey.

I feel that this Stone is the same Stone found by the Minnesota DNR in 1971 and therefore is being accepted as the subject corner.