

Office of County Recorder
Yellow Medicine County, Minnesota
I hereby certify that the within instrument
was filed on December 11, 2008 at 9:35 AM

N/C DANIEL G. NICKOLS, PLS
DNR DIVISION OF LANDS AND MINERALS
MINNESOTA DEPARTMENT OF NATURAL RESOURCES
500 LAFAYETTE ROAD
ST PAUL MN 55155-4037

Kay Zempel, Yellow Medicine County Recorder

By Debra Blas Deputy

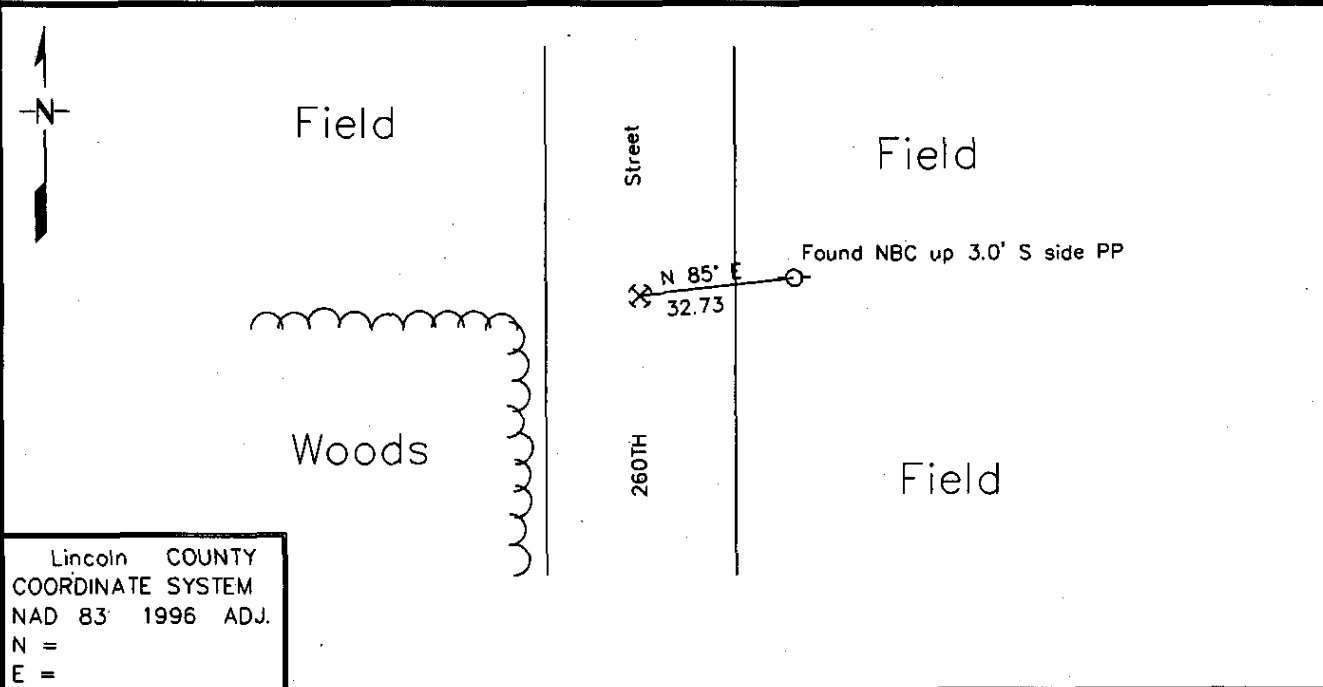
Index No. _____

CERTIFICATE OF LOCATION OF GOVERNMENT CORNER

East Quarter Corner of Section 34, Township 114, Range 44
5th Principal Meridian, State of Minnesota, County of Yellow Medicine

At the corner location shown on the sketch:

- On 9/10/2008 found a RR Spike Down 0.3' Removed, Dug to old road bed down
DATE found nothing else.
 - left monument as found,
 - lowered monument,
 - removed monument (explain)
- On 9/10/2008 Placed a Set 3/4" X 24" rebar
DATE with a plastic cap marked MN DNR LS 19839 over stone



Lincoln COUNTY
COORDINATE SYSTEM
NAD 83 1996 ADJ.
N =
E =

Statement of evidence for this corner location is on back of this page. October 2008
WMA00898.00.00.01

I certify that this document was researched and prepared by me or under my direct supervision.
SIGNATURE Daniel G. Nickols DATE 12/4/2008 License Number 19839
Title: Land Surveyor Professional Engineer County Surveyor County Engineer

Statement of Evidence for the East Quarter Corner of Section 34, Township 114
North, Range 44 West of the 5th Principal Meridian.

1871 The subject corner was established by L Harrington. His notes state that he ran north between Sections 34 & 35.

At 40.00 Chains he set a quarter section post and "Raised Mound as per instructions."

At 80.00 Chains he "Set Post for the corner to Sections 26, 27, 34 & 35 raised Mound as per instructions."

Neither Mr. Harrington's monument or accessories were found during our survey.

1903 County Surveyor John Norgarrd surveyed in Section 34. Notes indicate that he established the North, South and East Quarter Corners "on line and at equal distance between Sec. Corners. His notes indicate that he set an Oak Stake at the subject corner. Said survey shows distances along the North South and West lines and the south line of the NE ¼ of the Section.

1971 Surveyors from the Minnesota DNR set a RR spike midway and on line between the NE & SE Corners of the Section as was done in 1903. Ties for this corner are illegible.

2008 Field Crew from Minnesota Department of Natural Resources (DNR) excavated the corner location with the aid of a backhoe. The excavation was 6' N-S; 2' E-W and 3.5' Deep, centered on the Lost Position. Found a Railroad spike (down 0.3'); Encountered old road grade at a depth of 2.0'; Nothing else was found in the excavation. Set ¾" X 24" Rebar with Plastic Cap marked #19839 (down 0.3') midway an on line between the NE & SE corners of the Section as was done in 1903 and 1971.

I feel that this corner is Lost as determined by the standards set forth in the Manual of Surveying Instructions as was the case dating back to 1903. Therefore the monument has been set midway and on line between the NE & SE Corners of the Section.