

# CERTIFICATE OF LOCATION OF GOVERNMENT CORNER

NORTHEAST Corner of Section 20, Township 115, Range 43, 5TH P.M.

STATE OF MINNESOTA, County of YELLOW MEDICINE

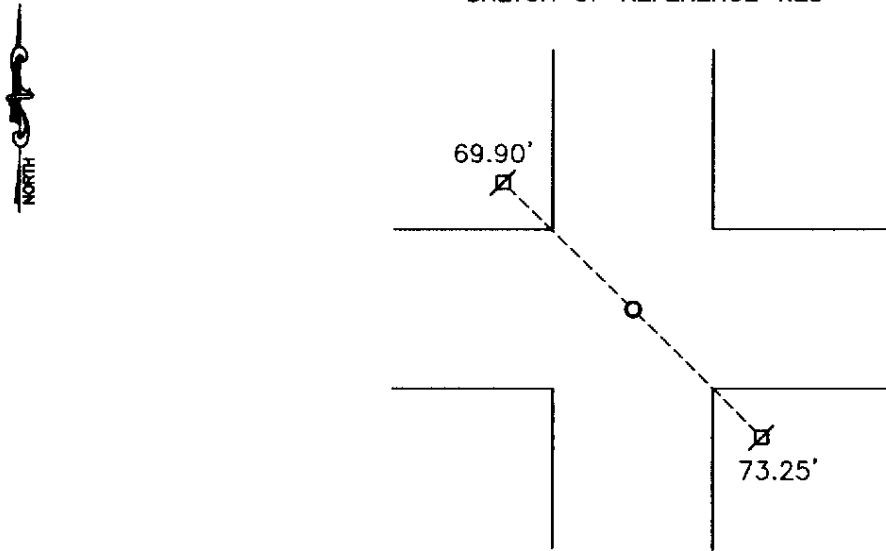
At the corner location shown on the sketch:

On 03-21-2008 found a IRON  
DATE

left monument as found,  lowered monument,  removed monument (explain)

On 03-21-2008 placed a 5/8" IRON WITH SEAL #43844  
DATE

### SKETCH OF REFERENCE TIES



Nail and seal in power pole NW 69.90'  
Nail and seal in power pole SE 73.25'

Statement of evidence relative to this corner location is on back of page.

I hereby certify that this document and the data contained herein was prepared by me or under my direct supervision.

*Paul H. Burt* 1/16/09  
SIGNATURE DATE

Registration No. 43844

Land Surveyor,  Professional Engineer  
 County Surveyor,  County Engineer

### OFFICE OF THE COUNTY RECORDER

County of \_\_\_\_\_

I hereby certify that this document was filed in the Co. Recorders office at \_\_\_\_\_ .M on the \_\_\_\_\_ day of \_\_\_\_\_ A.D. 20 \_\_\_\_\_

County Recorder \_\_\_\_\_

By \_\_\_\_\_, Deputy

DOCUMENT NO. \_\_\_\_\_

Statement of Evidence

In 1867, David Watson did the original subdivision of the township.

On March 21, 2008, Buetel-Moseng Land Surveying found an iron set by the Yellow Medicine County Highway Department at the corner, we tied it out and removed it. We continued to search but found nothing else. We held to the position of the found iron and set a  $\frac{3}{8}$ " iron with seal #43844 in its place.

Doc# 247482 Fee: \$0.00 2 Pages  
Office of County Recorder  
Yellow Medicine County, Minnesota  
I hereby certify that the within instrument  
was filed on February 24, 2009 at 2:30 PM

Kay Zempel, Yellow Medicine County Recorder

By *Heidi J. Bakkefjord* Deputy

*NIC Buetel-Moseng Land Surveying  
PO Box 32  
Marshall, MN 56258*