

CERTIFICATE OF LOCATION OF GOVERNMENT CORNER

EAST QUARTER Corner of Section 17, Township 115, Range 43, 5TH P.M.

STATE OF MINNESOTA, County of YELLOW MEDICINE

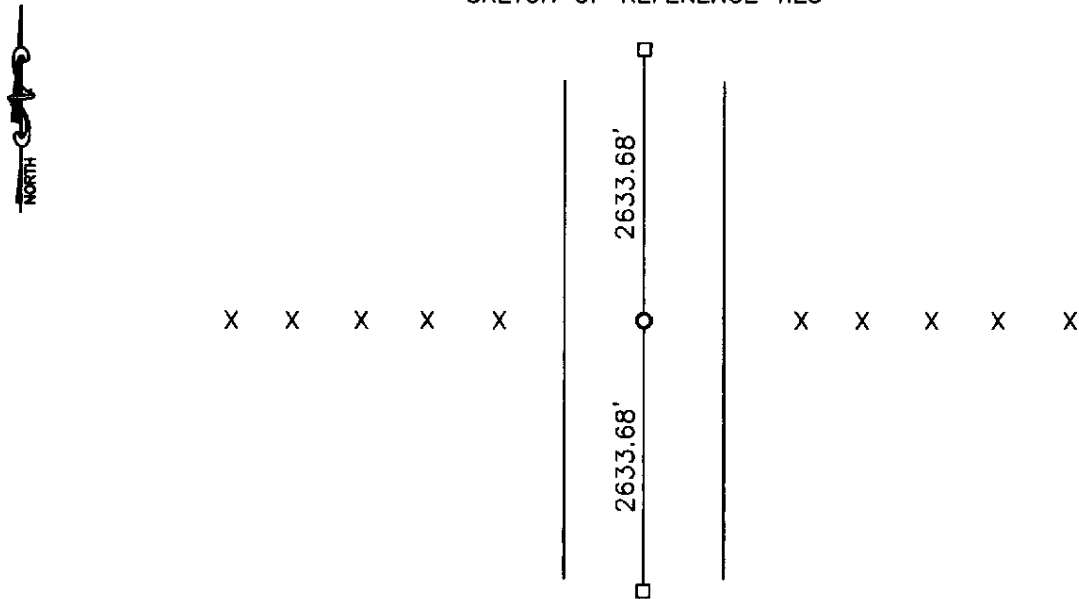
At the corner location shown on the sketch:

On _____ found a _____
DATE

left monument as found, lowered monument, removed monument (explain)

On 03-21-2008 placed a SURVEY SPIKE WITH SEAL #43844
DATE

SKETCH OF REFERENCE TIES



Statement of evidence relative to this corner location is on back of page.

I hereby certify that this document and the data contained herein was prepared by me or under my direct supervision.

[Signature] 1/16/09
SIGNATURE DATE

Registration No. 43844

Land Surveyor, Professional Engineer
 County Surveyor, County Engineer

OFFICE OF THE COUNTY RECORDER

County of _____

I hereby certify that this document was filed in the Co. Recorders office at _____ .M on the _____ day of _____ A.D. 20 _____

County Recorder _____

By _____, Deputy

DOCUMENT NO. _____

Statement of Evidence

In 1867, David Watson did the original subdivision of the township.

On March 21, 2008, Bueltel-Moseng Land Surveying set a survey spike with seal #43844 midway and on line between the section corners.

Doc# 247483 Fee: \$0.00 2 Pages

Office of County Recorder
Yellow Medicine County, Minnesota
I hereby certify that the within instrument
was filed on February 24, 2009 at 2:35 PM

Kay Zempel, Yellow Medicine County Recorder

By Heidi J. Bakkefjord Deputy

N/c Bueltel - Moseng Land Surveying
PO Box 32
Marshall, MN 56258