

CERTIFICATE OF LOCATION OF GOVERNMENT CORNER

North Quarter Corner of Section 24, Township 114, Range 40, 5TH P.M.

STATE OF MINNESOTA, County of Yellow Medicine

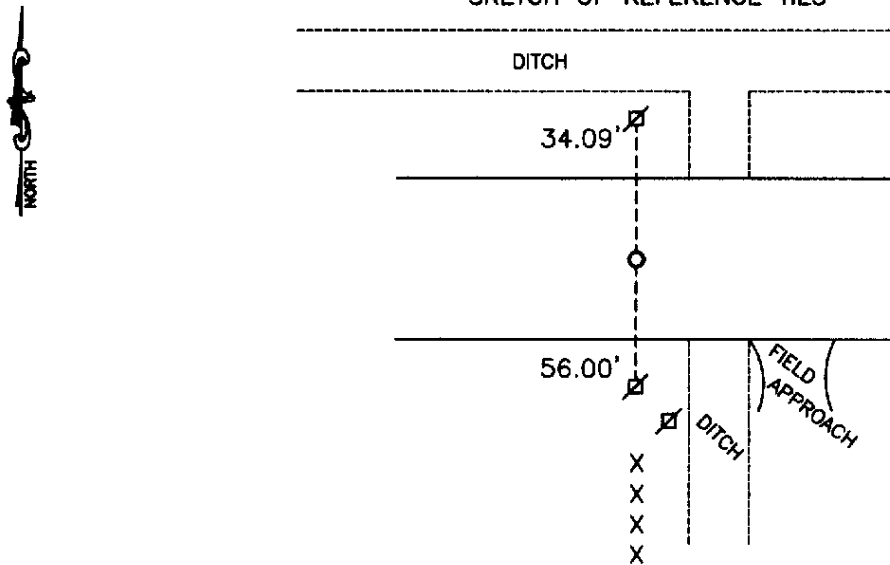
At the corner location shown on the sketch:

On _____ found a _____
DATE

left monument as found, lowered monument, removed monument (explain)

On 5-20-2008 placed a 1 inch iron pipe
DATE

SKETCH OF REFERENCE TIES



Minnesota State Plane Coordinate
System Yellow Medicine County Datum
NAD83 (1996)
N: 148260.422
E: 574312.671

NAIL AND SEAL IN POWERPOLE NORTH 34.09'
NAIL AND SEAL IN POWERPOLE SOUTH 56.00'

Statement of evidence relative to this corner location is on back of page.

I hereby certify that this document and the data contained herein was prepared by me or under my direct supervision.

[Signature] 8/11/08
SIGNATURE DATE

Registration No. 43844

Land Surveyor, Professional Engineer
 County Surveyor, County Engineer

OFFICE OF THE COUNTY RECORDER

County of _____

I hereby certify that this document was filed in the Co. Recorders office at _____ .M on the _____ day of _____ A.D. 20 _____

County Recorder _____

By _____, Deputy

DOCUMENT NO. _____

Statement of Evidence

In 1890 Jonath Peterman called the corner as a post with a recorded distance from the Northwest corner of 24-114-40 as being 2655.84'.


In April 1920 Jon Norguard measured 2656' from the Northwest Corner of 24-114-40. He set nothing.

On May 20, 2008 Bueltel Moseng Land Surveying set a 1 inch iron pipe seal #43844 midway between section corners and in the centerline of the road. The corner is in line with the fence to the south and is 2655.945 west of the Northwest corner of Section 24-114-40.

Doc# 247484 Fee: \$0.00 2 Pages

Office of County Recorder
Yellow Medicine County, Minnesota
I hereby certify that the within instrument
was filed on February 24, 2009 at 2:40 PM

Kay Zempel, Yellow Medicine County Recorder

By  Deputy

N/C Bueltel - Moseng Land Surveying
120 Box 32
Marshall, MN 56259