

CERTIFICATE OF LOCATION OF GOVERNMENT CORNER

NORTHEAST Corner of Section 32, Township 114, Range 45, 5TH P.M.

STATE OF MINNESOTA, County of YELLOW MEDICINE

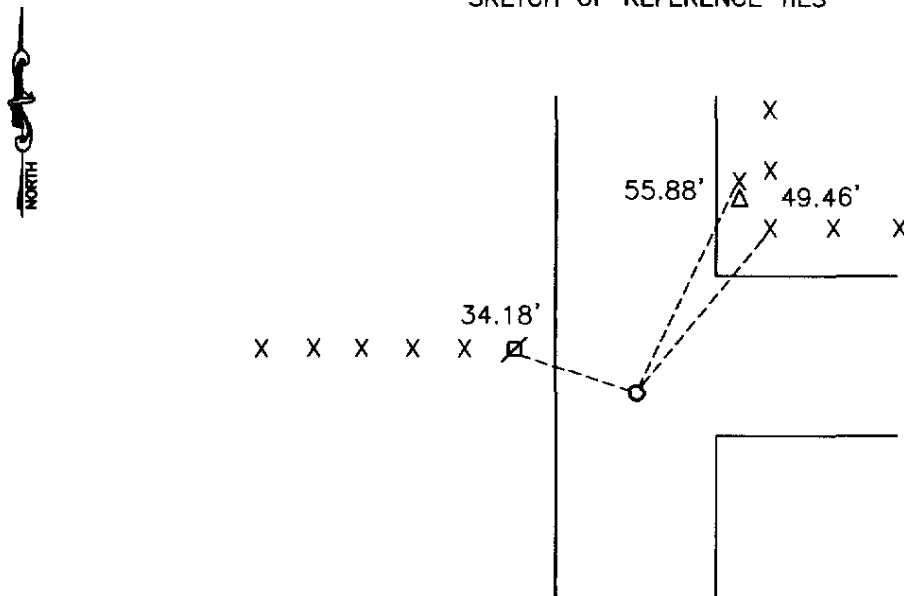
At the corner location shown on the sketch:

On 09-24-2008 found a 8"x8" SQUARE CUT GRANITE STONE WITH WOODEN
DATE
STAKE ON NORTH SIDE.

left monument as found, lowered monument, removed monument (explain)

On 09-24-2008 placed a 1" IRON PIPE WITH SEAL #43844
DATE

SKETCH OF REFERENCE TIES



Minnesota State Plane Coordinate
System Yellow Medicine County Datum
NAD83 (1996)
N: 138036.162
E: 396723.876

Nail and seal in power pole WNW 34.18'
Nail and seal in top of pedestal guard post NE 55.88'
Nail and seal in top of corner fence post NE 49.46'

Statement of evidence relative to this corner location is on back of page.

I hereby certify that this document and the data contained herein was prepared by me or under my direct supervision.

Samuel Benke 2/23/09
SIGNATURE DATE

Registration No. 43844

Land Surveyor, Professional Engineer
 County Surveyor, County Engineer

OFFICE OF THE COUNTY RECORDER

County of _____

I hereby certify that this document was filed in the Co. Recorders office at _____ .M on the _____ day of _____ A.D. 20 _____

County Recorder _____

By _____, Deputy

DOCUMENT NO. _____

Statement of Evidence

In 1871, L. Harrington did the original subdivision of the township.

John Norgaard found a stone at the corner.

On September 24, 2008, Buettel-Moseng Land Surveying dug with a backhoe and found a 8" x 8" square cut granite stone with a wooden stake along the north side. We set a 1" iron pipe with seal #43844 over the stone.

Doc# 247485 Fee: \$0.00 2 Pages

Office of County Recorder

Yellow Medicine County, Minnesota

I hereby certify that the within instrument
was filed on February 24, 2009 at 2:45 PM

Kay Zempel, Yellow Medicine County Recorder

By  Deputy

N/K Buettel-Moseng Land Surveying
PO Box 32
Marshall, MN 56258