

CERTIFICATE OF LOCATION OF GOVERNMENT CORNER

.....SE.....Corner of Section...11.....Township...116N.....Range 41W 5th P.M.

STATE OF MINNESOTA, County of...YELLOW MEDICINE

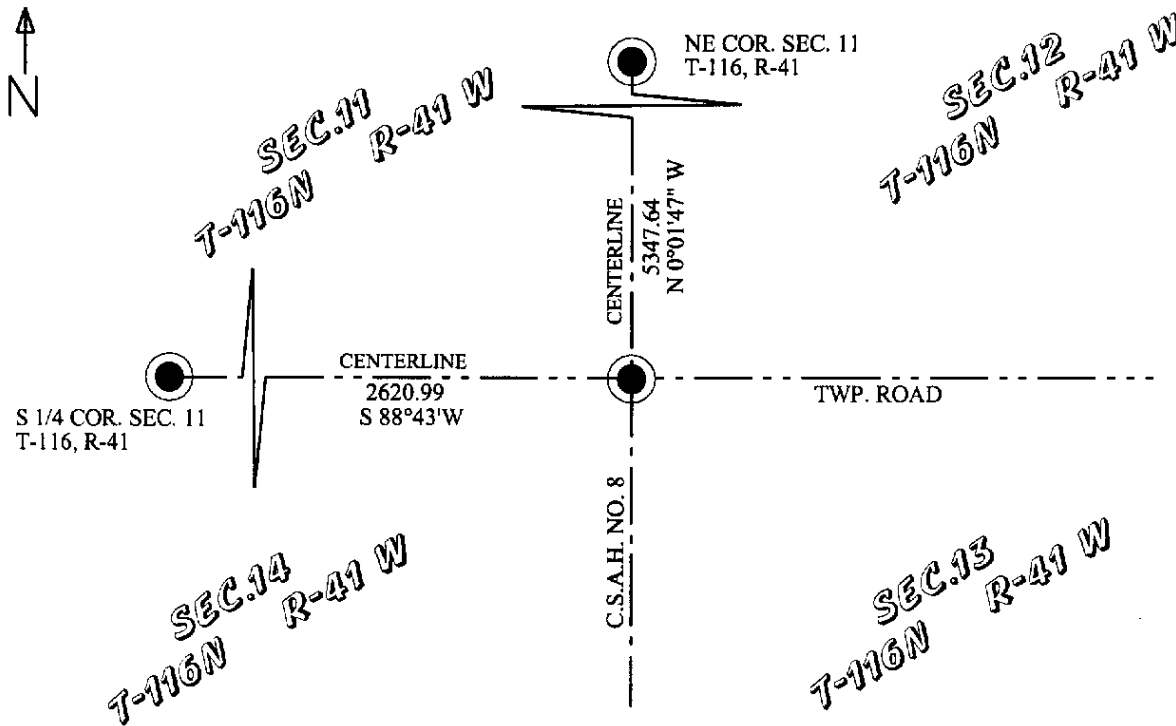
At the corner location shown on the sketch

On.....4-28-09.....found a.....MAGNETIC NAIL.....
Date

left monument as found, lowered monument removed monument(explain)

On.....placed a.....
Date

SKETCH OF REFERENCE TIES



Statement of evidence relative to this corner location is on back of page.

I hereby certify that this document and the data contained herein was prepared by me or under my direct supervision.

B. Maly 5-5-09
Signature Date

Registration No.42300.....

Land Surveyor, County Surveyor,
 Professional Engineer County Engineer.

OFFICE OF THE COUNTY RECORDER

County of

I hereby certify that this document was filed in the County Recorders office at.....M. on theday of.....A.D., 20....

County Recorder.....

By, Deputy

DOCUMENT NO.

STATEMENT OF EVIDENCE:

SOUTHEAST CORNER OF SECTION 11, TOWNSHIP 116 N, RANGE 41 W, YELLOW MEDICINE COUNTY, MINNESOTA

MAY 12 1892 - JONAH PETERMAN (COUNTY SURVEYOR) MADE A RETRACEMENT SURVEY OF SECTION 11, TOWNSHIP 116N, RANGE 41W. HE REPORTS ALL SECTION CORNERS AND QUARTER SECTION CORNERS FOUND, EXCEPT THE WEST QUARTER CORNER. HE SHOWS A DISTANCE OF 80.98 CHAINS TO THE NORTHEAST CORNER AND 39.90 TO THE SOUTH QUARTER CORNER. NO TIES WERE RECORDED.

1974 COUNTY ENGINEERS PLANS FOR COUNTY ROAD NO. 8 SHOWS A MONUMENT AT THE SOUTHEAST CORNER OF SECTION 11 AND THE NORTHEAST CORNER OF SECTION 11. STATIONING SHOWS A DISTANCE OF 5346.90 FEET BETWEEN CORNERS. TIES SHOWN ON PLANS

JUNE 14, 1996 BYRON DAHLE PERFORMED A SURVEY IN SECTION 11. HE SHOWS A FOUND IRON AT THE CENTERLINE INTERSECTION OF COUNTY ROAD 8 AND THE TOWNSHIP ROAD. HE SHOWS A BEARING AND DISTANCE OF S 88°43' W, 2620.99 FEET TO THE SOUTH QUARTER CORNER WHICH HE SET AT CENTERLINE OF TOWNSHIP ROAD AND OCCUPATION LINE TO THE SOUTH. HE SHOWS A BEARING AND DISTANCE OF N 0°01'48" W, 5347.64 FEET TO AN IRON MONUMENT THAT HE FOUND AT THE NORTHEAST CORNER OF SECTION 11. TIES MADE BUT NOT RECORDED.

DECEMBER 3, 2007 ROY A. MARIHART PERFORMED A SURVEY OF SECTION 11. HIS SURVEY SHOWS FOUND IRON MONUMENTS AT ALL CORNERS. HE SHOWS A BEARING AND DISTANCE OF S 89°47'07" W, 2621.04 FEET FROM THE SOUTHEAST CORNER OF SECTION 11 TO THE SOUTH QUARTER CORNER OF SECTION 11. AND A BEARING AND DISTANCE OF N 01°01'50" E, 5347.23 FEET. NO TIES RECORDED.

APRIL 28, 2009- BENJAMIN C. O'MALLEY PERFORMED A SURVEY IN SECTION 11. I FOUND A P.K. NAIL AT THE CENTERLINE INTERSECTION OF COUNTY ROAD 8 AND A TOWNSHIP ROAD. I FOUND BYRON DAHLE'S IRON MONUMENT AT THE SOUTH QUARTER CORNER WHICH VERIFIED HIS MEASUREMENTS. I FOUND AN IRON MONUMENT AT THE NORTHEAST CORNER THAT VERIFIED HIS MEASUREMENTS. NEW TIES WERE MADE.

Doc# 248086 Fee: \$0.00 2 Pages

Office of County Recorder
Yellow Medicine County, Minnesota
I hereby certify that the within instrument
was filed on May 7, 2009 at 9:20 AM

N/O

O'Malley & Boe Land Surveyors, Inc.
328 SW 3rd St.
Willmar, MN 56201

Kay Zempel, Yellow Medicine County Recorder

By *Heidi Bruckelmy* Deputy