

Office of County Recorder
Yellow Medicine County, Minnesota
I hereby certify that the within instrument
was filed on May 20, 2009 at 10:15 AM

Kay Zempel, Yellow Medicine County Recorder

Heidi J. Bakkelund Deputy

N/C Bruce W. Shepperd, LS
Minnesota Dept. of Natural Resources
500 Lafayette Road
St. Paul, MN 55155-4045

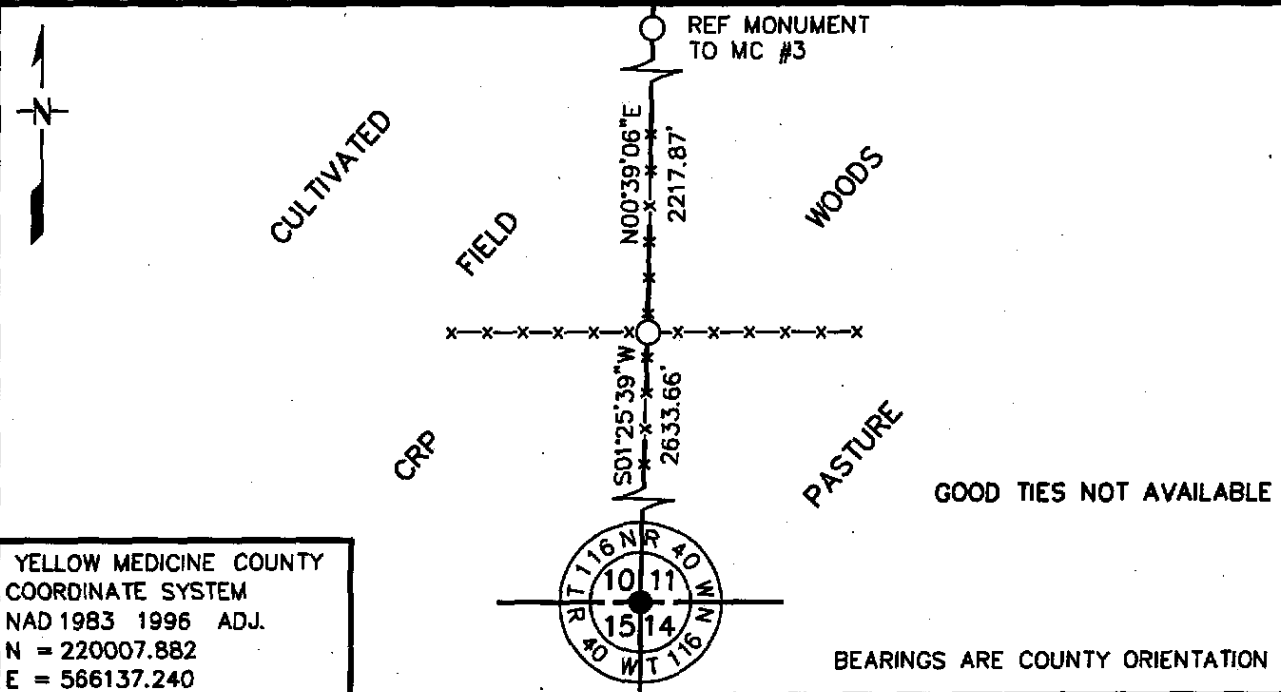
Index No. G-17

CERTIFICATE OF LOCATION OF GOVERNMENT CORNER

EAST QUARTER Corner of Section 10, Township 116 N, Range 40 W
5th Principal Meridian, State of Minnesota, County of YELLOW MEDICINE

At the corner location shown on the sketch:

- On 11/19/07 found a CORNER FENCE POST WITH FENCES N-S-E-W
DATE
- left monument as found, □ lowered monument, □ removed monument (explain)
- On 11/19/07 Placed a 3/4" X 24" REBAR WITH PLASTIC CAP STAMPED
DATE
"MN DNR LS 17003", FLUSH, NEXT TO THE CORNER FENCE POST



Statement of evidence for this corner location is on back of this page. 5/11/09
NPB00050.00.00.01

I certify that this document was researched and prepared by me or under my direct supervision.

SIGNATURE Bruce W. Shepperd DATE 05/10/09 License Number 17003
Title: Land Surveyor Professional Engineer County Surveyor County Engineer

The DNR Division of Lands and Minerals contacted the following for survey information:

Minnesota Secretary of State's Office
Chippewa County Recorder's Office
Yellow Medicine County Recorder's Office
Yellow Medicine County Highway Engineer's Office
Montevideo City Engineer's Office
MNDOT Offices in St. Paul and Willmar
Rodeberg and Berryman Consulting Engineers of Montevideo
Bonnema Surveys Inc. of Willmar
Bueltel Moseng of Marshall

- 1865 U.S. General Land Office notes, obtained from the Secretary of State's Office, show the corner marked with a wood post in a mound with pits as per instructions.
- 1875 May 10, a plat of Government Lot 1 of Section 2 and Government Lots 3,4,5,6 of Section 11, by L.C. Laired, Surveyor, obtained from the Yellow Medicine County Recorder's Office, states the following:
"I do hereby certify that the above plat is a correct representation of a survey made by L.R. Moyer Oct 24,25 and 26 A.D.1870."
The following is shown by the quarter corner:
"lost ¼ post"
A distance of 40 chains is shown north of the ¼ corner and a distance of 65 chains is shown east of the ¼ corner.
- 1910 February 24, page 208 of a Surveyor's Record Book, obtained from the Yellow Medicine County Recorder's Office, contains a survey in Section 11 by John Norgaard. Survey states:
"beginning at a point 1320 feet east of the center of Section 11 ..."
Survey does not give any information about the west quarter corner of Section 11.
- 1932 Page 208 of a Surveyor's Record Book, obtained from the Yellow Medicine County Recorder's Office, contains a survey in Section 11 by John Norgaard. Survey states:
"beginning at the Minnesota River thence south on section line 572 ft ..."
572 ft is shown on top of the following which has lines drawn thru it:
"..to fence corner on top of bluff."
Survey does not give any information about Meander Corner Number 3 or the west quarter corner of Section 11.
- No Date A right-of-way map for U.S. Trunk Highway 212, obtained from the MNDOT Office in St. Paul shows a fence intersection at corner. No distances are shown to the corner.
- 2007 November 19, the DNR Division of Lands and Minerals found a corner fence post with fences north, south, east and west at corner. The area around the corner fence post was scanned with an electronic metal detector but the only metal attraction that was encountered was wire. Also, probed a 5 foot diameter area around the corner fence post in search of a stone monument but did not find one. A ¾ inch by 24 inch rebar with a plastic cap stamped "MN DNR LS 17003" was set next to the corner fence post and was found to be:
2633.66 feet from the northeast corner of Section 15

Analysis of the above information led the DNR Division of Lands and Minerals to conclude that the ¾ inch diameter by 24 inch long rebar with a plastic cap stamped "MN DNR LS 17003" set next to a corner fence post marks the obliterated location of the corner.