

Office of County Recorder  
Yellow Medicine County, Minnesota  
I hereby certify that the within instrument  
was filed on May 20, 2009 at 10:25 AM

Kay Zempel, Yellow Medicine County Recorder

*Heidi J. Bakkefjord* Deputy

N/C Bruce W. Shepperd, LS  
Minnesota Dept. of Natural Resources  
500 Lafayette Road  
St. Paul, MN 55155-4045

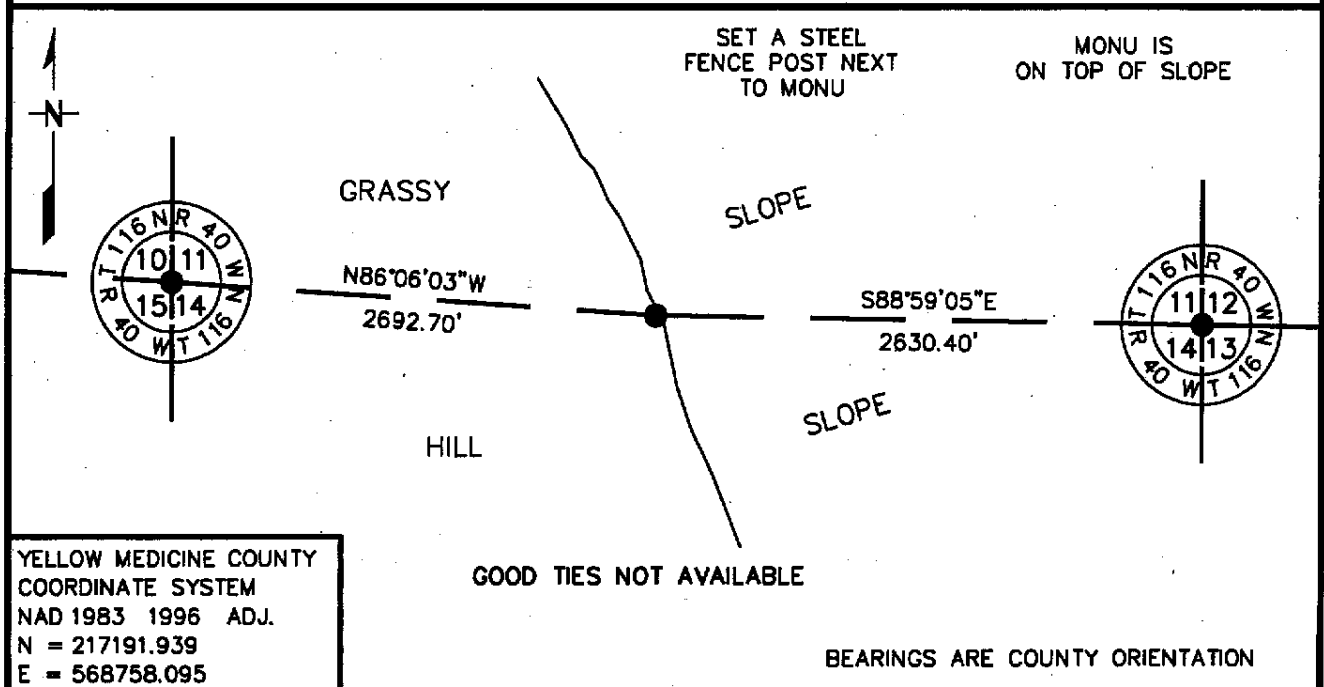
Index No. J-19

# CERTIFICATE OF LOCATION OF GOVERNMENT CORNER

NORTH QUARTER Corner of Section 14, Township 116 N, Range 40 W  
5th Principal Meridian, State of Minnesota, County of YELLOW MEDICINE

At the corner location shown on the sketch:

- On 11/19/07 found a 1-1/4" INSIDE DIAMETER IRON PIPE, UP 0.6'  
DATE
- left monument as found,  lowered monument,  removed monument (explain)
- On \_\_\_\_\_ Placed a \_\_\_\_\_  
DATE



YELLOW MEDICINE COUNTY  
COORDINATE SYSTEM  
NAD 1983 1996 ADJ.  
N = 217191.939  
E = 568758.095

Statement of evidence for this corner location is on back of this page. 5/12/09  
NPB00050.00.00.01

I certify that this document was researched and prepared by me or under my direct supervision.

SIGNATURE Bruce W. Shepperd DATE 05/10/09 License Number 17003  
Title:  Land Surveyor  Professional Engineer  County Surveyor  County Engineer

North Quarter Corner of Section 14, Township 116 North, Range 40 West

The DNR Division of Lands and Minerals contacted the following for survey information:

Minnesota Secretary of State's Office  
Chippewa County Recorder's Office  
Yellow Medicine County Recorder's Office  
Yellow Medicine County Highway Engineer's Office  
Montevideo City Engineer's Office  
MNDOT Offices in St. Paul and Willmar  
Rodeberg and Berryman Consulting Engineers of Montevideo  
Bonnema Surveys Inc. of Willmar  
Bueltel Moseng of Marshall

1865 U.S. General Land Office notes, obtained from the Secretary of State's Office, show the corner marked with a wood post in a mound with pits as per instructions.

No Page 208 of a Surveyor's Record Book, obtained from the Yellow Medicine County  
Date Recorder's Office, contains a survey in Section 11 by John Norgaard. Survey shows a post at corner but does not indicate if it was found or set. The corner is shown:  
2634.9 feet from the northeast corner of Section 14

No A right-of-way map for U.S. Trunk Highway 212, obtained from the MNDOT Office in St. Paul  
Date shows an iron pin in place at corner. The corner is shown:  
509.5 feet from POC Station 393+67.9  
2630.5 feet from the northeast corner of Section 14

2005 July 20, a Certificate of Survey in Sections 13,14, 24 of Township 116 North, Range 40 West, obtained from Roy Marihart, LS 19092, shows a 1 1/2 inch iron pipe in place at corner. The corner is shown:  
2630.02 feet from the northeast corner of Section 14

2007 November 19, the DNR Division of Lands and Minerals found a 1 1/4 inch inside diameter iron pipe, up 0.6 of a foot, next to a steel fence post at corner. The iron pipe was found to be:  
2630.40 feet from the northeast corner of Section 14  
2692.70 feet from the northwest corner of Section 14  
68.24 feet south and 28.24 feet east of the lost position for corner

Analysis of the above information led the DNR Division of Lands and Minerals to conclude that the found iron pipe marks the location of the corner.