

Office of County Recorder
Yellow Medicine County, Minnesota
I hereby certify that the within instrument
was filed on May 20, 2009 at 10:30 AM

Kay Zempel, Yellow Medicine County Recorder

By Heidi J. Bakke Deputy

N/C Bruce W. Shepperd, LS
Minnesota Dept. of Natural Resources
500 Lafayette Road
St. Paul, MN 55155-4045

Index No. J-21

CERTIFICATE OF LOCATION OF GOVERNMENT CORNER

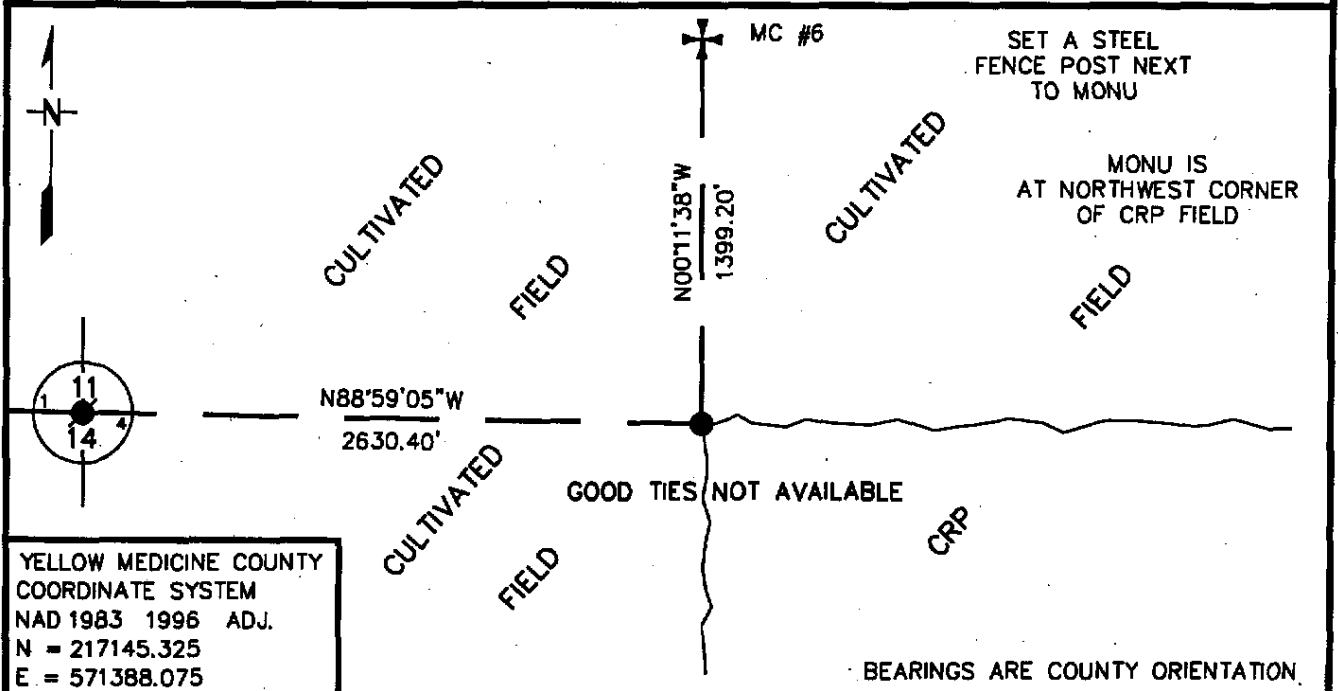
NORTHEAST Corner of Section 14, Township 116 N, Range 40 W
5th Principal Meridian, State of Minnesota, County of YELLOW MEDICINE

At the corner location shown on the sketch:

On 11/19/07 found a 1-1/4" INSIDE DIAM. BY 42" LONG IRON PIPE, DOWN 0.2'
DATE

left monument as found, lowered monument, removed monument (explain)

On _____ Placed a _____
DATE



YELLOW MEDICINE COUNTY
COORDINATE SYSTEM
NAD 1983 1996 ADJ.
N = 217145.325
E = 571388.075

Statement of evidence for this corner location is on back of this page.

5/12/09
NPB00050.00.00.01

I certify that this document was researched and prepared by me or under my direct supervision.

SIGNATURE Bruce W. Shepperd DATE 05/10/09 License Number 17003

Title: Land Surveyor Professional Engineer County Surveyor County Engineer

The DNR Division of Lands and Minerals contacted the following for survey information:

Minnesota Secretary of State's Office
Chippewa County Recorder's Office
Yellow Medicine County Recorder's Office
Yellow Medicine County Highway Engineer's Office
Montevideo City Engineer's Office
MNDOT Offices in St. Paul and Willmar
Rodeberg and Berryman Consulting Engineers of Montevideo
Bonnema Surveys Inc. of Willmar
Bueltel Moseng of Marshall

- 1865 U.S. General Land Office notes, obtained from the Secretary of State's Office, show the corner marked with a wood post in a mound with pits as per instructions.
- 1901 September 27, Surveyor's Record Book B, obtained from the Yellow Medicine County Recorder's Office, contains John Norgaard's, County Surveyor, remonumentation notes for section corners in Yellow Medicine County. A note on page 58 states the following about the corner:
found fence post set by John Mooney in the government mound, set top of monument 3" above ground
Norgaard set 6" by 6" by 24" cut jasper granite stones for monuments
- 1918 July, page 412 of a Surveyor's Record Book, obtained from the Yellow Medicine County Recorder's Office, contains a survey in Section 13 by John Norgaard, County Surveyor. Survey shows corner but does not indicate what kind of monument was found or set. The following is noted:
" I made a subdivision of the section over 20 years ago"
- No Page 208 of a Surveyor's Record Book, obtained from the Yellow Medicine County
Date Recorder's Office, contains a survey in Section 11 by John Norgaard. Survey shows corner but does not indicate what kind of monument was found or set. The corner is shown:
2634.9 feet from the north quarter corner of Section 14
- No A right-of-way map for U.S. Trunk Highway 212, obtained from the MNDOT Office in St. Paul
Date shows a symbol for corner but does not indicate what kind of monument was found or set. The corner is shown:
2121.0 feet from POC Station 393+67.9
2630.5 feet from the north quarter corner of Section 14
- 2005 July 20, a Certificate of Survey in Sections 13,14, 24 of Township 116 North, Range 40 West, obtained from Roy Marihart, LS 19092, shows a 1 ½ inch iron pipe inplace at corner. The corner is shown:
2630.02 feet from the north quarter corner of Section 14
2652.35 feet from the east quarter corner of Section 14

2007 November 19, the DNR Division of Lands and Minerals found a 1 1/4 inch diameter by 42 inch long iron pipe at corner, 0.2 of a foot below the surface. A backhoe was hired to dig for the record stone and a 10 foot by 10 foot by 4 foot deep hole was dug the center being the found iron pipe. No evidence of the record stone or other monuments was found in the excavation. The iron pipe was reset and was found to be:

2630.40 feet from the north quarter corner of Section 14

Analysis of the above information led the DNR Division of Lands and Minerals to conclude that the found iron pipe marks the location of the corner.