

Office of County Recorder
Yellow Medicine County, Minnesota
I hereby certify that the within instrument
was filed on May 20, 2009 at 10:40 AM

Kay Zempel, Yellow Medicine County Recorder

By Heidi J. Bakkefjord Deputy

N/C Bruce W. Shepperd, LS
Minnesota Dept. of Natural Resources
500 Lafayette Road
St. Paul, MN 55155-4045

Index No. EF-17

CERTIFICATE OF LOCATION OF GOVERNMENT CORNER

NUMBER 3 MEANDER Corner of Section 10, Township 116 N, Range 40 W

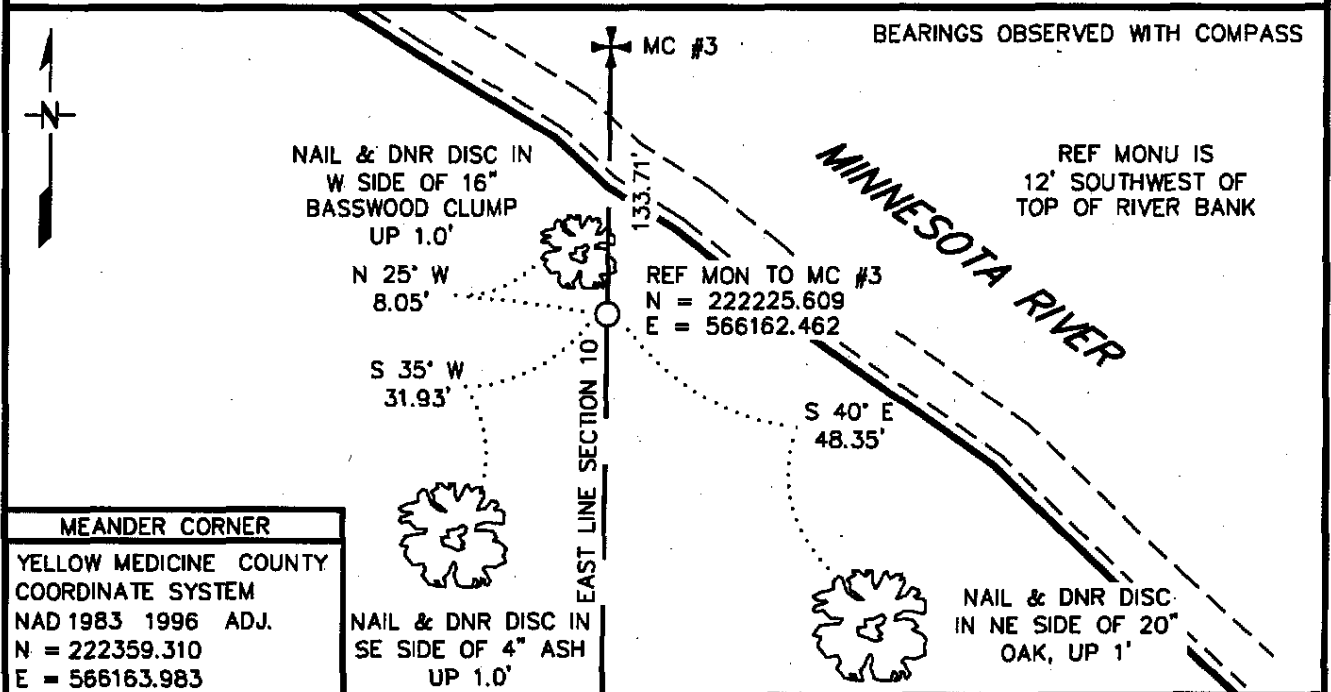
5th Principal Meridian, State of Minnesota, County of YELLOW MEDICINE

At the corner location shown on the sketch:

On _____ found a _____
DATE

left monument as found, lowered monument, removed monument (explain)

On 10/09/08 Placed a 3/4" X 24" REBAR WITH PLASTIC CAP STAMPED
DATE
"MN DNR LS 17003", FLUSH, AS REFERENCE MONUMENT TO MEANDER CORNER.



Statement of evidence for this corner location is on back of this page.

5/11/09
NPB00050.00.00.01

I certify that this document has researched and prepared by me or under my direct supervision.

SIGNATURE Bruce W. Shepperd DATE 05/18/09 License Number 17003

Title: Land Surveyor Professional Engineer County Surveyor County Engineer

The DNR Division of Lands and Minerals contacted the following for survey information:

Minnesota Secretary of State's Office
Chippewa County Recorder's Office
Yellow Medicine County Recorder's Office
Yellow Medicine County Highway Engineer's Office
Montevideo City Engineer's Office
MNDOT Offices in St. Paul and Willmar
Rodeberg and Berryman Consulting Engineers of Montevideo
Bonnema Surveys Inc. of Willmar
Bueltel Moseng of Marshall

1865 U.S. General Land Office notes, obtained from the Secretary of State's Office, show the corner marked with a wood post with the following bearing trees:

12" Lynn, North $87\frac{1}{2}^{\circ}$ East 43 links (28.38 feet)
8" Lynn, North $83\frac{1}{2}^{\circ}$ West, 24 links (15.84 feet)

The corner is shown:

35.63 chains (2351.58 feet) from the east quarter corner of Section 10

The notes also show that a line north of this meander corner was not measured.

1875 May 10, a plat of Government Lot 1 of Section 2 and Government Lots 3,4,5,6 of Section 11, by L.C. Laired, Surveyor, obtained from the Yellow Medicine County Recorder's Office, states the following:

"I do hereby certify that the above plat is a correct representation of a survey made by L.R. Moyer Oct 24,25 and 26 A.D.1870."

No reference is made to the meander corner but a point is shown as follows:

on the south bank of the Minnesota River and on the west line of Section 11

A distance of 40 chains is shown along the west line of Section 11 north of the west quarter corner of Section 11.

1932 Page 208 of a Surveyor's Record Book, obtained from the Yellow Medicine County Recorder's Office, contains a survey in Section 11 by John Norgaard. Survey states:

"beginning at the Minnesota River thence south on section line 572 ft ..."

572 ft is shown on top of the following which has lines drawn thru it:

"..to fence corner on top of bluff.."

Survey does not give any information about Meander Corner Number 3 or the west quarter corner of Section 11.

2007 November, the DNR Division of Lands and Minerals determined that the GLO distance of 2351.58 feet north of the east quarter corner of Section 10 is currently in the Minnesota River.

When no evidence of the corner is found it's considered lost, and according to the Manual of Instructions for the Survey of the Public Land of the United States, 1973, prepared by the Bureau of Land Management, U.S. Dept. of the Interior, in Chapter 5-45 which states: "Where a line has been terminated with measurement in one direction only, a lost corner will be restored by record bearing and distance, counting from the nearest regular corner, the latter having been duly identified or restored."

A north-south fence line was located 1507 feet and 1942 feet north of the east quarter corner of Section 10. Then a position for the meander corner was computed on the northerly extension of the fence at the GLO distance of 2351.58 feet from the east quarter corner of Section 10.

Analysis of the available information led the DNR Division of Lands and Minerals to conclude that the above computed position for corner marks its location.

A reference monument to the meander corner was set on the east line of Section 10 as shown on the sketch of reference ties.