

Doc# 248617 Fee: \$0.00 3 Pages

Office of County Recorder  
Yellow Medicine County, Minnesota  
I hereby certify that the within instrument  
was filed on July 23, 2009 at 9:50 AM

Kay Zempel, Yellow Medicine County Recorder

By Heidi J. Bakkelund Deputy

N/C Daniel G. Nickols, PLS  
Minnesota Dept. of Natural Resources  
500 Lafayette Road  
St. Paul, MN 55155-4037

Index No. J-13

# CERTIFICATE OF LOCATION OF GOVERNMENT CORNER

NORTHEAST Corner of Section 16, Township 114, Range 44

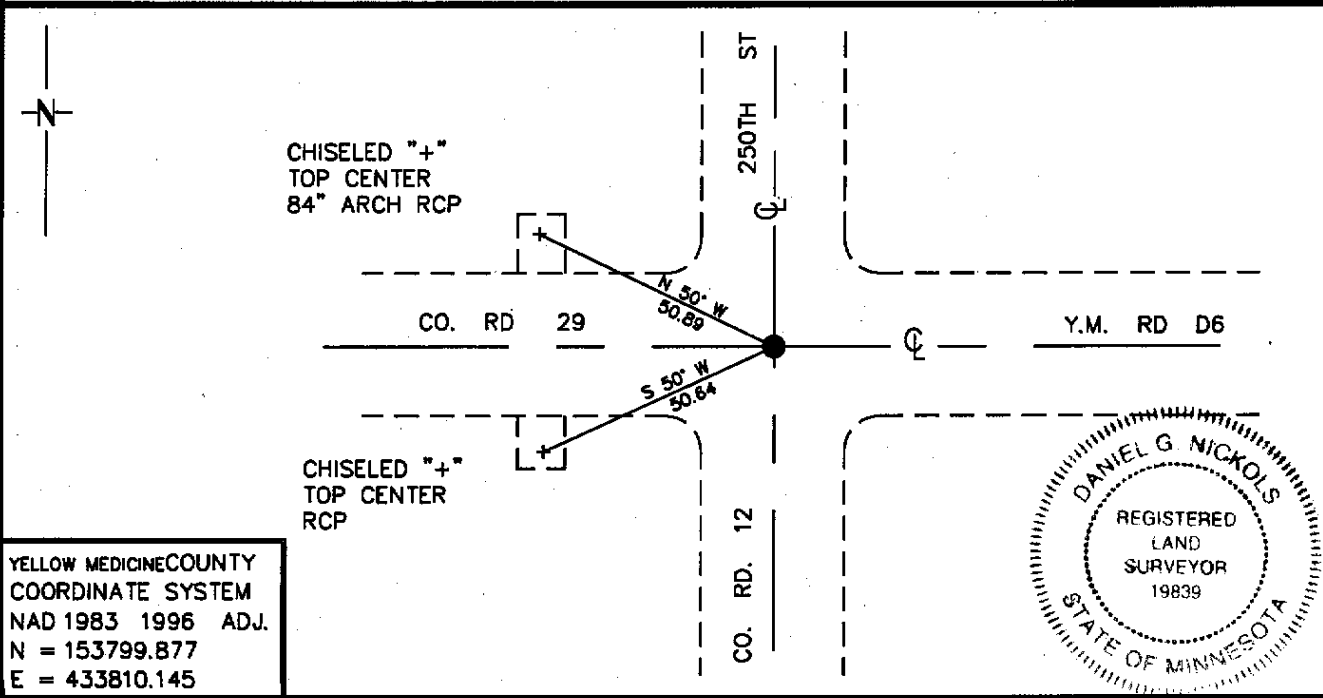
5 Principal Meridian, State of Minnesota, County of YELLOW MEDICINE

At the corner location shown on the sketch:

On 3/25/09 found a PK NAIL AT SURFACE OF ROAD  
DATE

left monument as found,  lowered monument,  removed monument (explain)

On \_\_\_\_\_ Placed a \_\_\_\_\_  
DATE



YELLOW MEDICINE COUNTY  
COORDINATE SYSTEM  
NAD 1983 1996 ADJ.  
N = 153799.877  
E = 433810.145

Statement of evidence for this corner location is on back of this page.

07/06/09  
WMA01797.00.00.01

I certify that this document was researched and prepared by me or under my direct supervision.

SIGNATURE Daniel G. Nickols DATE MARCH 25, 2009 License Number 19839

Title:  Land Surveyor  Professional Engineer  County Surveyor  County Engineer

Statement of Evidence for the Northeast Corner of Section 16, Township 114 North,  
Range 44 West of the 5<sup>th</sup> Principal Meridian.

- 1871 The subject corner was established by L. Harrington. His notes state that he ran north on true line between Sections 15 & 16.  
At 0.50 Chains he intersected a dry creek, 5 links wide;  
At 40.00 Chains he set a post for ¼ Section Corner;  
At 41.00 Chains he intersected a dry creek, 5 links wide;  
At 60.00 Chains same creek;  
At 80.00 chains Set a post in raised mound for the corner to Sections 9, 10, 15 & 16. (No ties taken).

Neither Mr. Harrington's monument nor accessories were found during our survey.

- 1901 Surveyors Record Book B, Page 187: County Surveyor John Norgaard set a 6" X 6" X 24" jasper granite monument 1" above ground. His notes state "Located at equal proportionate distances between the Northeast Corner Section 9 and the East ¼ post Section 21 and in the center of road running North & South."
- 1909 Large Red Surveyors Record Book, County Surveyor John Norgaard found stone.
- 1951 "Section Corner Tie" Book at Yellow Medicine County Highway Department indicates Stone laying in SE ditch. No description of a monument set is given. The following ties are shown  
Fence Post NW 71.1' Co Fence Post SW 60.4'  
Fence Post SW 59.6'
- 1963 "Section Corner Tie" Book at Yellow Medicine County Highway Department indicates ties to an unknown monument.  
Fence Post SW 70.3' Tele Pole SW 64.6'  
14" Ctwd SE 88.2'
- 1990 Yellow Medicine County Highway Department indicated "Found Spike 2" below surface." No Ties Given.
- 1994 Yellow Medicine County Highway Department indicated "Found Spike 1" below surface." Ties were spikes in centerline of the road 100' east and west of corner.
- 2000 Yellow Medicine County Highway Department indicated unknown mark on highway plan. No Ties Given.

2002 Surveyor Roy Marihart (LS 19092) indicated a monument at the corner on a survey in the North Half of the NW  $\frac{1}{4}$  of Section 9. Bearings and distances are shown for the subdivision of said Section 9 on the survey.

2009 Field Crew from Minnesota Department of Natural Resources (DNR) located a PK nail at the centerline-centerline road intersection. No excavation of the site was undertaken as the record indicates that the stone was found destroyed in 1951 and the fact that the area of the corner is a substantial fill area due to the building of the roads. We have accepted the found PK Nail as the position of the subject corner.

For more information concerning this survey contact Minnesota Department of Natural Resources.