

Doc# 248618 Fee: \$0.00 3 Pages

Office of County Recorder
Yellow Medicine County, Minnesota
I hereby certify that the within instrument
was filed on July 23, 2009 at 9:55 AM

Kay Zempel, Yellow Medicine County Recorder

By Heidi J. Bakkelund Deputy

N/C Daniel G. Nickols, PLS
Minnesota Dept. of Natural Resources
500 Lafayette Road
St. Paul, MN 55155-4037

Index No. J-15

CERTIFICATE OF LOCATION OF GOVERNMENT CORNER

NORTHEAST Corner of Section 21, Township 114, Range 44

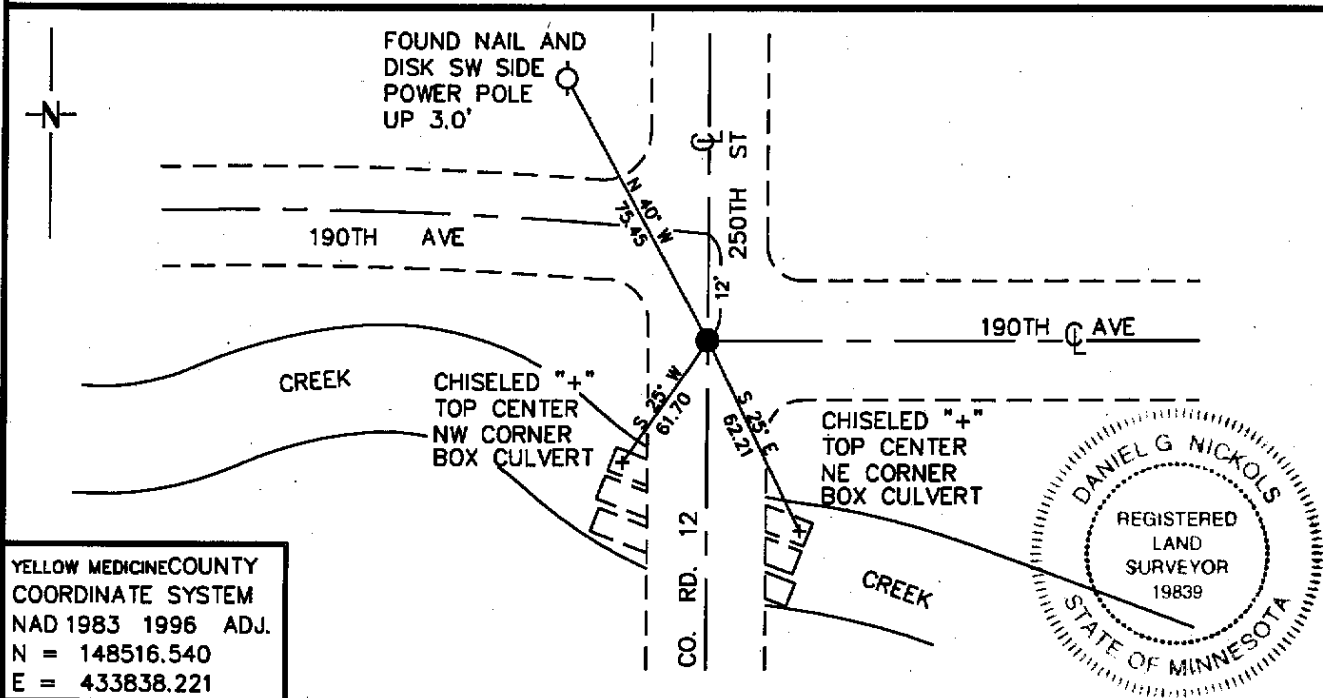
5 Principal Meridian, State of Minnesota, County of YELLOW MEDICINE

At the corner location shown on the sketch:

On 3/25/09 found a PK NAIL AT INTERSECTION ROADS N-S AND E.
DATE

left monument as found, lowered monument, removed monument (explain)

On _____ Placed a _____
DATE



YELLOW MEDICINE COUNTY
COORDINATE SYSTEM
NAD 1983 1996 ADJ.
N = 148516.540
E = 433838.221

Statement of evidence for this corner location is on back of this page.

07/06/09
WMA01797.00.00.01

I certify that this document was researched and prepared by me or under my direct supervision.

SIGNATURE Daniel G. Nickols DATE MARCH 25, 2009 License Number 19839

Title: Land Surveyor Professional Engineer County Surveyor County Engineer

Statement of Evidence for the Northeast Corner of Section 21, Township 114 North,
Range 44 West of the 5th Principal Meridian.

- 1871 The subject corner was established by L. Harrington. His notes state that he ran north on true line between Sections 21 & 22.
At 40.00 Chains he set a post in raised mound for $\frac{1}{4}$ Section Corner;
At 80.00 chains Set a post in raised mound for the corner to Sections 15, 16, 21 & 22. (No ties taken).
- Neither Mr. Harrington's monument nor accessories were found during our survey.
- 1901 Surveyors Record Book B, Page 187: County Surveyor John Norgaard set a 6" X 6" X 24" jasper granite monument 2" above ground. His notes state "Located at equal proportionate distances between the East $\frac{1}{4}$ post Section 21 and the Northeast Corner Section 9 and the South $\frac{1}{4}$ post Section 15 and the Southwest Corner Section 16.
- 1910 Large Red Surveyors Record Book, County Surveyor John Norgaard indicates setting a stone equal distance and on line between the Section Corners at the North Quarter Corner of Section 22. No mention is made concerning whether a monument was found or set at the Northeast Corner of Section 21 nor are reference ties given to it.
- 1909 Large Red Surveyors Record Book, County Surveyor John Norgaard indicates distance south and west of the corner but does not indicate the nature of the monument at the corner. The following ties are indicated :
- | | | | |
|--------------|-------|-----------|-------|
| Bridge SW | 60' | Bridge SE | 60.4' |
| Tele Pole SE | 43.5' | | |
- Unknown "Section Corner Tie" Book at Yellow Medicine County Highway Department does not indicate the nature of a monument but the following ties are shown
- | | | | |
|------------|-------|--------------|-------|
| W Rail SSW | 60.3' | Tele Pole SE | 43.5' |
| E Rail SSE | 60.4' | | |
- 1963 "Section Corner Tie" Book at Yellow Medicine County Highway Department indicates ties to an unknown monument.
- | | | | |
|--------------------|-------|--------------------|-------|
| Cor. Fence Post NW | 70.9' | Cor. Fence Post SE | 58.2' |
|--------------------|-------|--------------------|-------|
- 1993 Survey by Lyle Moseng (LS 11943) in the Northeast Quarter indicates found iron pin over granite monument. No ties are given.

2000 Yellow Medicine County Highway Department indicated unknown monument on highway plan. The following ties are shown:
Power Pole NW 75.45' X on Box SW 61.5'
Spike in Road E 100' X on Box SE 61.8

2009 Field Crew from Minnesota Department of Natural Resources (DNR) located a PK nail at the centerline-centerline road intersection (N, S & E). No excavation of the site was undertaken as the found PK nail fit the 2000 ties by the highway department. We have accepted the found PK Nail as the position of the subject corner.

For more information concerning this survey contact Minnesota Department of Natural Resources.