

Doc# 248619 Fee: \$0.00 2 Pages
Office of County Recorder
Yellow Medicine County, Minnesota
I hereby certify that the within instrument
was filed on July 23, 2009 at 10:00 AM

Kay Zempel, Yellow Medicine County Recorder

Heidi J. Bakkelund Deputy

N/C Daniel G. Nickols, PLS
Minnesota Dept. of Natural Resources
500 Lafayette Road
St. Paul, MN 55155-4037

Index No. J-15

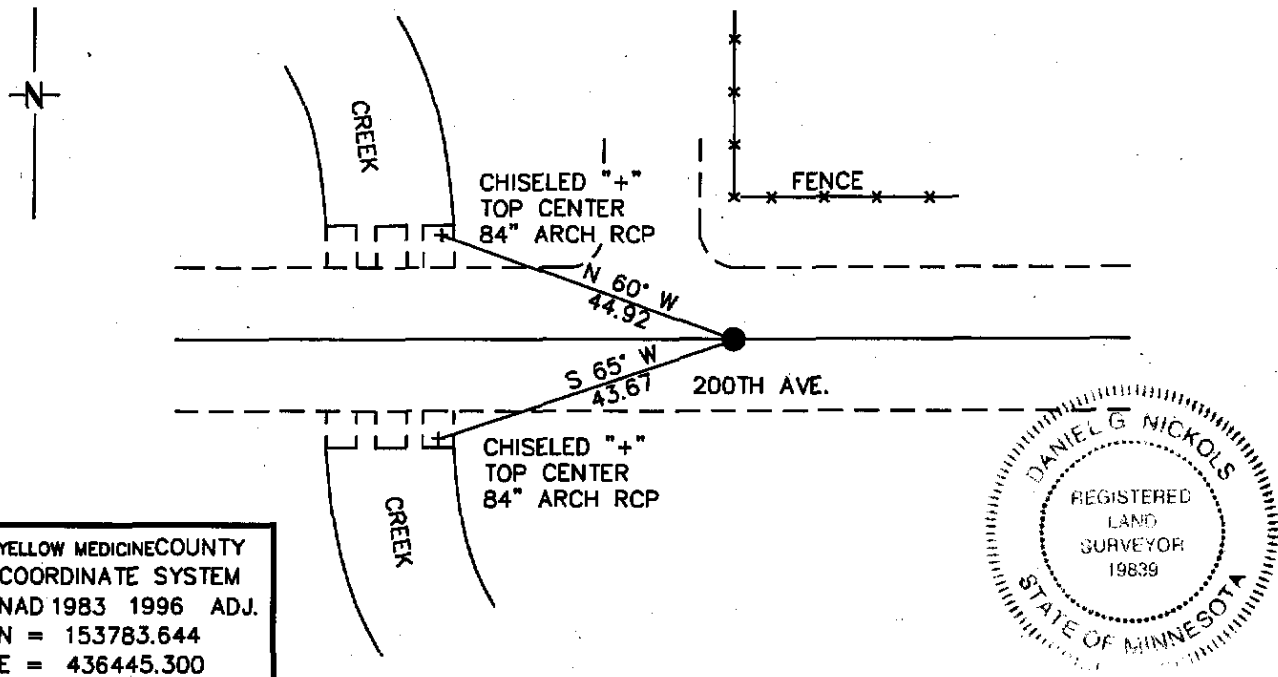
CERTIFICATE OF LOCATION OF GOVERNMENT CORNER

NORTH QUARTER Corner of Section 15, Township 114, Range 44

5 Principal Meridian, State of Minnesota, County of YELLOW MEDICINE

At the corner location shown on the sketch:

- On _____ found a _____
DATE
- left monument as found, lowered monument, removed monument (explain)
- On 5/19/09 Placed a 3/4" X 24 REBAR WITH PLASTIC CAP
DATE
STAMPED "MN DNR LS 19839" SET, FLUSH



Statement of evidence for this corner location is on back of this page.

07/06/09
WMA01797.00.00.01

I certify that this document was researched and prepared by me or under my direct supervision.

SIGNATURE Daniel G. Nickols DATE May 19, 2009 License Number 19839

Title: Land Surveyor Professional Engineer County Surveyor County Engineer

Statement of Evidence for the North Quarter Corner of Section 15, Township 114
North, Range 44 West of the 5th Principal Meridian.

1874 The subject corner was established by L. Harrington. His notes state that he ran east on random line between Sections 15 & 22. At 40.00 Chains he set a temporary a quarter section post. At 79.76 chains Intersect N & S line 19 links North of the corner to Secs 14, 15, 22 & 23 from which he ran N 89-52 W on true line. At 39.88 Chains Set post in mound with pits for ¼ Sec Cor. (No ties taken).

At 79.76 Chains The Corner to Sections 14, 15, 22 & 23.

Neither Mr. Harrington's monument nor accessories were found during our survey.

1994 Highway plans obtained from Yellow Medicine County Highway Department indicate an unidentified monument at this location

2009 Field Crew from Minnesota Department of Natural Resources (DNR) was unable to find any monument at this location. An excavation was not undertaken as this is an area of substantial fill due to the proximity of creek and there being no historic monuments in the record after the original survey. The corner was established on the centerline of the road and at proportional distance shown on the highway plan.

For more information concerning this survey contact Minnesota Department of Natural Resources.