

Office of County Recorder
Yellow Medicine County, Minnesota
I hereby certify that the within instrument
was filed on July 23, 2009 at 10:05 AM

Kay Zempel, Yellow Medicine County Recorder

Heidi G. Bakkefjord Deputy

N/C Daniel G. Nickols, PLS
Minnesota Dept. of Natural Resources
500 Lafayette Road
St. Paul, MN 55155-4037

Index No. J-17

CERTIFICATE OF LOCATION OF GOVERNMENT CORNER

NORTHEAST Corner of Section 15, Township 114, Range 44

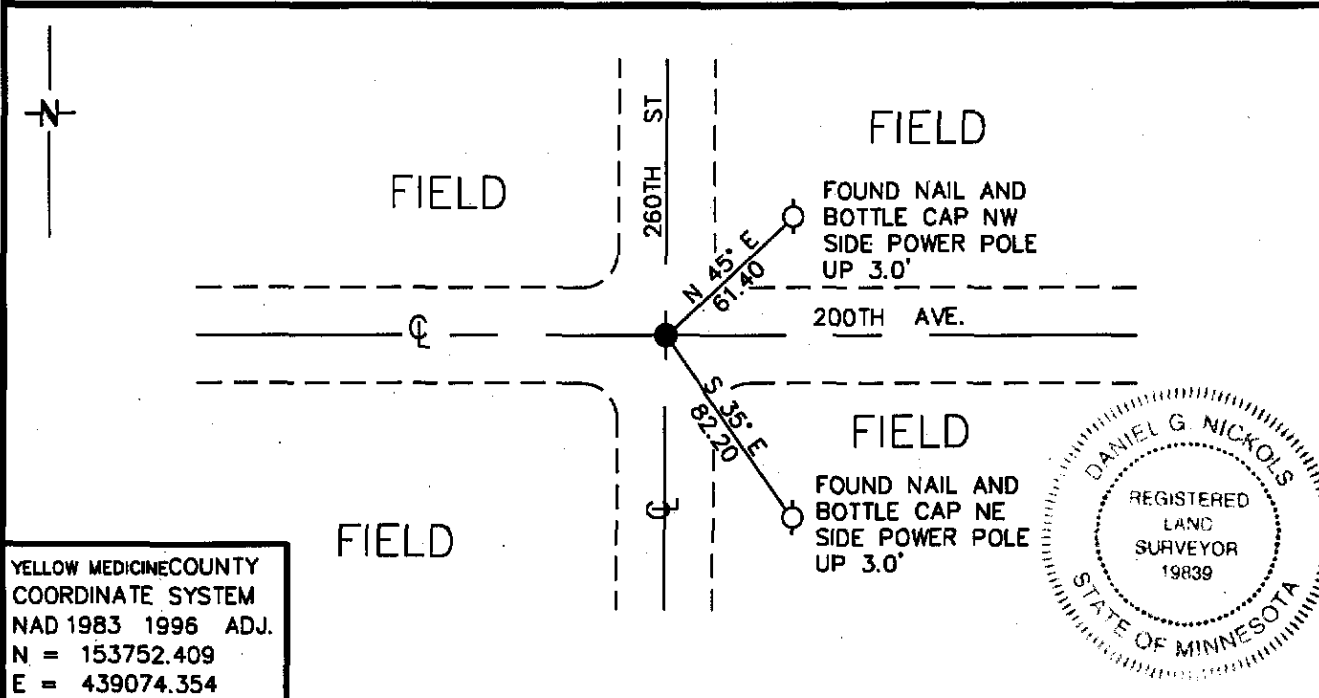
5 Principal Meridian, State of Minnesota, County of YELLOW MEDICINE

At the corner location shown on the sketch:

On 3/25/09 found a SPIKE FOUND DN 0.1'
DATE

left monument as found, lowered monument, removed monument (explain)

On 3/25/09 Placed a 3/4" X 24" REBAR WITH PLASTIC
DATE
STAMPED "MN DNR LS 19839" SET, FLUSH REPLACING FOUN SPIKE



YELLOW MEDICINE COUNTY
COORDINATE SYSTEM
NAD 1983 1996 ADJ.
N = 153752.409
E = 439074.354

Statement of evidence for this corner location is on back of this page.

07/08/09
WMA01797.00.00.01

I certify that this document was researched and prepared by me or under my direct supervision.

SIGNATURE Daniel G. Nickols DATE MARCH 25, 2009 License Number 19839

Title: Land Surveyor Professional Engineer County Surveyor County Engineer

Statement of Evidence for the Northeast Corner of Section 15, Township 114 North,
Range 44 West of the 5th Principal Meridian.

1871 The subject corner was established by L. Harrington. His notes state that he ran north on true line between Sections 14 & 15. At 40.00 Chains he set a quarter section post. At 80.00 chains he a post in a mound per instructions for the corner of Sections 10, 11, 14 & 15. (No ties taken).

Neither Mr. Harrington's monument nor accessories were found during our survey.

1901 County Surveyor John Norgaard set a 6" X 6" X 24" jasper granite monument 1" above ground at the location of found Government mound and pits.

1909 County Surveyor John Norgaard found stone.

Unknown Yellow Medicine County Highway Department records indicate ties to unknown monument.

Iron Pipe NE 45.0'	Iron Pipe SE 45.0'
4 th Fence Post NE 80.0'	3 rd Fence Post NW 68.8'
Cor. Fence Post SE 48.0'	Cor. Fence Post NE 48.0'

Unknown Yellow Medicine County Highway Department records indicate ties to unknown monument.

Nail in Fe Post NE 48.6'	Cap in PP NE 61.7'
Nail in Fe Post SE 48.2'	Cap in PP SE 81.9'

1990 Yellow Medicine County Highway Department found field stone and charred hub over square stone monument. Down 2.5'.

Nail and Disc in PP NE 61.40	Spike in CL road N 100'
Nail and disc in PP SE 82.20	Spike in CL road S 100'

2009 Field Crew from Minnesota Department of Natural Resources (DNR) located a spike (down 0.1') in centerline-centerline of the roads. 1990 ties by Yellow Medicine County Highway Department to the power poles NE & SE fit for distance. We feel that the spike being placed over the stone set by Norgaard is a perpetuation of the original corner. Set ¾" X 24" capped rebar marked MN DNR LS 19839 in place of the found spike.

For more information concerning this survey contact Minnesota Department of Natural Resources.