

Doc# 248621 Fee: \$0.00 3 Pages  
 Office of County Recorder  
 Yellow Medicine County, Minnesota  
 I hereby certify that the within instrument  
 was filed on July 23, 2009 at 10:10 AM

N/C Daniel G. Nickols, PLS  
 Minnesota Dept. of Natural Resources  
 500 Lafayette Road  
 St. Paul, MN 55155-4037

Kay Zempel, Yellow Medicine County Recorder  
*Heidi J. Bakke* Deputy

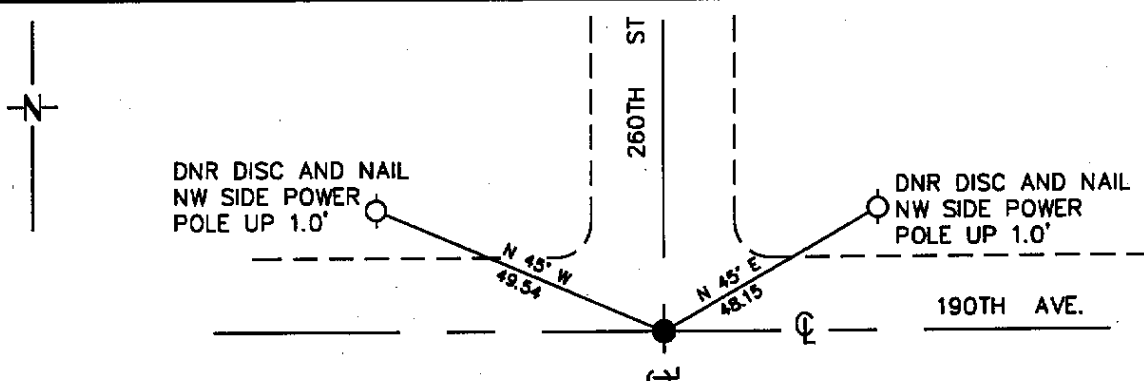
Index No. H-17

# CERTIFICATE OF LOCATION OF GOVERNMENT CORNER

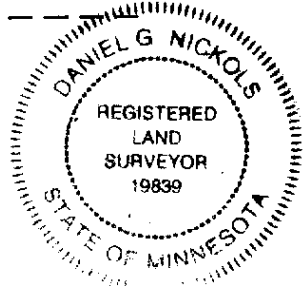
NORTHEAST Corner of Section 22, Township 114, Range 44  
5 Principal Meridian, State of Minnesota, County of YELLOW MEDICINE

At the corner location shown on the sketch:

- On \_\_\_\_\_ found a REBAR MARKED 19092  
DATE
- left monument as found,  lowered monument,  removed monument (explain)
- On 5/19/09 Placed a 3/4" X 24 REBAR WITH PLASTIC CAP  
DATE  
STAMPED "MN DNR LS 19839" SET. DN. 0.4' REPLACING FOUND REBAR



YELLOW MEDICINE COUNTY  
 COORDINATE SYSTEM  
 NAD 1983 1996 ADJ.  
 N = 148463.757  
 E = 439113.658



Statement of evidence for this corner location is on back of this page. 07/06/09  
WMA01797.00.00.01

I certify that this document was researched and prepared by me or under my direct supervision.

SIGNATURE Daniel G. Nickols DATE MAY 19, 2009 License Number 19839

Title:  Land Surveyor  Professional Engineer  County Surveyor  County Engineer

Statement of Evidence for the Northeast Corner of Section 22, Township 114 North,  
Range 44 West of the 5<sup>th</sup> Principal Meridian.

1871 The subject corner was established by L. Harrington. His notes state that he ran north on true line between Sections 22 & 23.  
At 12.00 Chains he intersected a dry creek or slough;  
At 40.00 Chains he set a post in raised mound for ¼ Section Corner;  
At 80.00 chains set a post in raised mound for the corner to Sections 14, 15, 22 & 23. (No ties taken).

Neither Mr. Harrington's monument nor accessories were found during our survey.

1901 Surveyors Record Book B, Page 187: County Surveyor John Norgaard found stone and stake in Government Mound set a 6" X 6" X 24" jasper granite monument 2" above ground.

1910 Large Red Surveyors Record Book, County Surveyor John Norgaard states that he established the North Quarter Corner of Section 22 equal distance and on line between Section Corners. However no description of what was found or set at the Northeast Corner of Section 22 is given nor are ties shown.

Unknown "Section Corner Tie" Book at Yellow Medicine County Highway Department No description of a monument set is given. The following ties are shown  
4<sup>th</sup> Fence Post WSW 83.0' 1<sup>st</sup> Steel Fence Post WSW 84.5'  
3<sup>rd</sup> Fence Post SW 61.0' Corner Fence Post NE 46.8

2009 Field Crew from Minnesota Department of Natural Resources (DNR) found a monument marked 19092 (Marihart) at the centerline-centerline road intersection. Contacted Roy Marihart and he said that he placed monument at centerline-centerline without any other found monument. MN DNR performed an excavation of the site 8' X 8' X 3' as the record indicates that there had been a stone marking the location of the corner. No stones or other evidence of the corner could be found. We have accepted Marihart's position of the subject corner and have placed a ¾" X 24" Rebar capped MN DNR LS 19839.

For more information concerning this survey contact Minnesota Department of Natural Resources.

Statement of Evidence for the North Quarter Corner of Section 15, Township 114  
North, Range 44 West of the 5<sup>th</sup> Principal Meridian.

1874            The subject corner was established by L. Harrington. His notes state that he ran east on random line between Sections 15 & 22. At 40.00 Chains he set a temporary a quarter section post. At 79.76 chains Intersect N & S line 19 links North of the corner to Secs 14, 15, 22 & 23 from which he ran N 89-52 W on true line. At 39.88 Chains Set post in mound with pits for ¼ Sec Cor. (No ties taken).

At 79.76 Chains The Corner to Sections 14, 15, 22 & 23.

Neither Mr. Harrington's monument nor accessories were found during our survey.

1994            Highway plans obtained from Yellow Medicine County Highway Department indicate an unidentified monument at this location

2009            Field Crew from Minnesota Department of Natural Resources (DNR) was unable to find any monument at this location. An excavation was not undertaken as this is an area of substantial fill due to the proximity of creek and there being no historic monuments in the record after the original survey. The corner was established on the centerline of the road and at proportional distance shown on the highway plan.

For more information concerning this survey contact Minnesota Department of Natural Resources.