

Doc# 248622 Fee: \$0.00 2 Pages

Office of County Recorder
Yellow Medicine County, Minnesota
I hereby certify that the within instrument
was filed on July 23, 2009 at 10:15 AM

N/C Daniel G. Nickols, PLS
Minnesota Dept. of Natural Resources
500 Lafayette Road
St. Paul, MN 55155-4037

Kay Zempel, Yellow Medicine County Recorder

By Heidi J. Burkholder Deputy

Index No. N-15

CERTIFICATE OF LOCATION OF GOVERNMENT CORNER

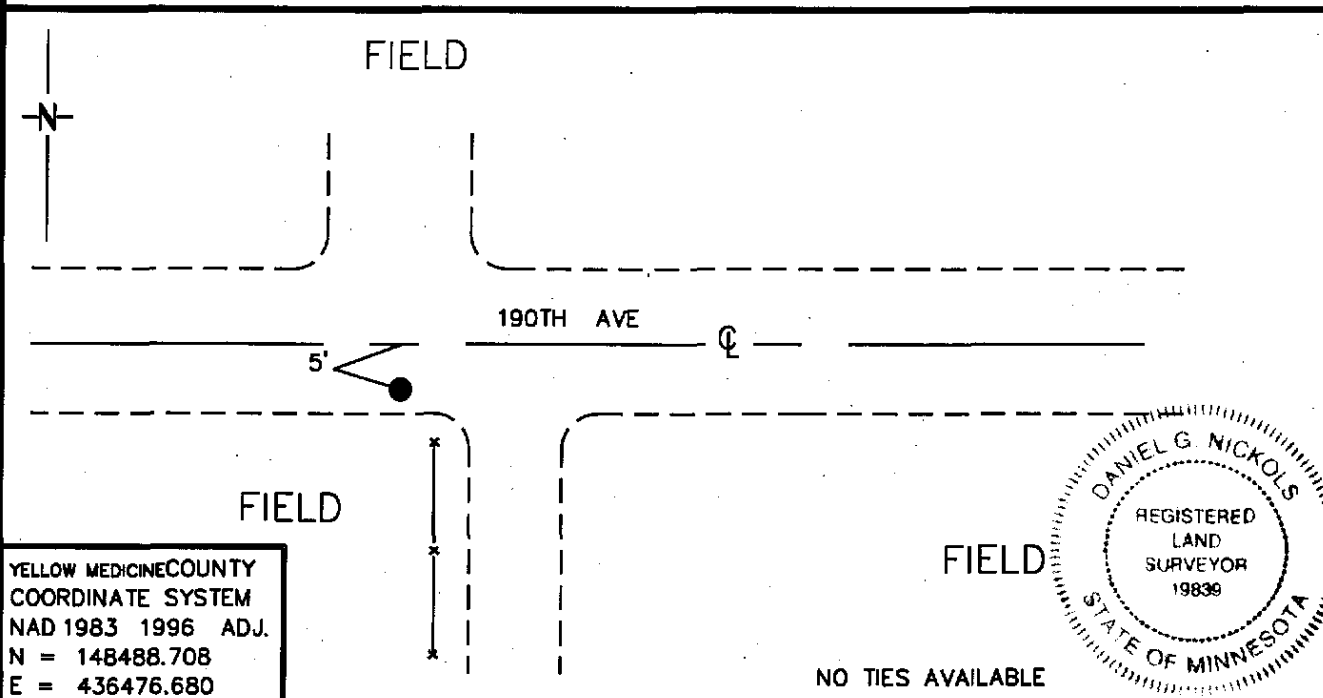
NORTH QUARTER Corner of Section 22, Township 114, Range 44

5 Principal Meridian, State of Minnesota, County of YELLOW MEDICINE

At the corner location shown on the sketch:

- On 5/19/09 found a 8"X 8"X 15" STONE DOWN 3.2'
DATE
- left monument as found, lowered monument, removed monument (explain)
- On 5/19/09 Placed a 1/2"X 12" REBAR WITH PLASTIC CAP
DATE

STAMPED "MN DNR LS 19839" SET. W. EDGE STONE



YELLOW MEDICINE COUNTY
COORDINATE SYSTEM
NAD 1983 1996 ADJ.
N = 148488.708
E = 436476.680

NO TIES AVAILABLE

Statement of evidence for this corner location is on back of this page.

07/06/09
WMA01797.00.00.01

I certify that this document was researched and prepared by me or under my direct supervision.

SIGNATURE Daniel G. Nickols DATE MAY 19, 2009 License Number 19839

Title: Land Surveyor Professional Engineer County Surveyor County Engineer

Statement of Evidence for the North Quarter Corner of Section 22, Township 114
North, Range 44 West of the 5th Principal Meridian.

1871 The subject corner was established by L. Harrington. His notes state that he ran East on a random line between Sections 15 & 22.
At 40.00 Chains he set a temporary post for ¼ Section Corner;
At 79.76 Chains he intersected N & S line 19 links N of the corner to Sections 14, 15, 22 & 23. He returned along true line and
At 39.88 Chains set post for ¼ Section and raised mound per instructions;
At 79.76 Chains The corner to Sections 14, 15, 22 & 23. (No ties taken).

Neither Mr. Harrington's monument nor accessories were found during our survey.

1910 Large Red County Surveyor Record Book; County Surveyor John Norgaard Set a stone on line and equal distance between Section Corners.

2009 Field Crew from Minnesota Department of Natural Resources (DNR) was unable to find any surface monument at this location. An excavation was undertaken and a 10' X 10' X 4' hole was excavated and at a depth of 3.2' and 5' south of centerline an 8" X 8" X 15" cut stone in a vertical position was found. The stone has been accepted as Norgaard's 1910 monument and a ¾" X 12' capped Rebar marked MN DNR LS 19839 was placed mark its location. The stone was left beneath the rebar.

For more information concerning this survey contact Minnesota Department of Natural Resources.