

Doc# 248623 Fee: \$0.00 2 Pages

Office of County Recorder  
Yellow Medicine County, Minnesota  
I hereby certify that the within instrument  
was filed on July 23, 2009 at 10:20 AM

N/C Daniel G. Nickols, PLS  
Minnesota Dept. of Natural Resources  
500 Lafayette Road  
St. Paul, MN 55155-4037

Kay Zempel, Yellow Medicine County Recorder

By Hedvig Bakkefjord Deputy

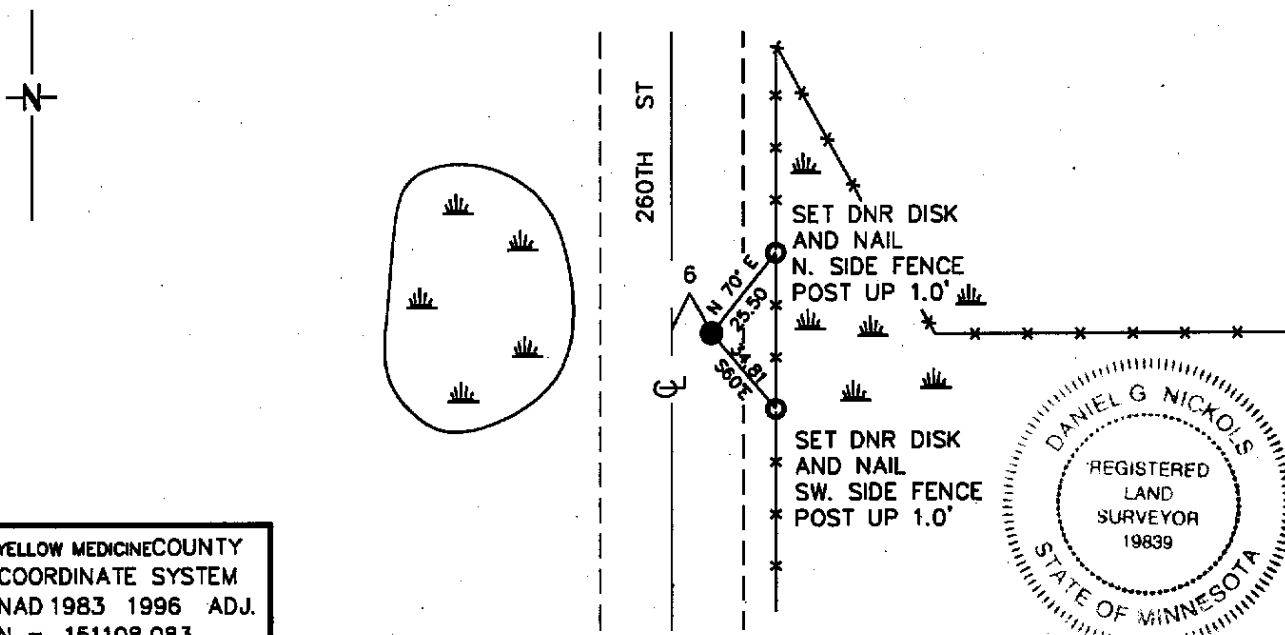
Index No. L-17

# CERTIFICATE OF LOCATION OF GOVERNMENT CORNER

EAST QUARTER Corner of Section 15, Township 114, Range 44  
5 Principal Meridian, State of Minnesota, County of YELLOW MEDICINE

At the corner location shown on the sketch:

- On \_\_\_\_\_ found a \_\_\_\_\_  
DATE
- left monument as found,  lowered monument,  removed monument (explain)
- On 3/25/09 Placed a 3/4" X 24" REBAR WITH PLASTIC STAMPED "MN DNR LS  
DATE 19839" SET, FLUSH MIDWAY AND ON LINE BETWEEN NE & SE CORNERS



YELLOW MEDICINE COUNTY  
COORDINATE SYSTEM  
NAD 1983 1996 ADJ.  
N = 151108.083  
E = 439094.006

Statement of evidence for this corner location is on back of this page.

07/06/09  
WMA01797.00.00.01

I certify that this document was researched and prepared by me or under my direct supervision.

SIGNATURE Daniel G. Nickols DATE MARCH 25, 2009 License Number 19839

Title:  Land Surveyor  Professional Engineer  County Surveyor  County Engineer

Statement of Evidence for the East Quarter Corner of Section 15, Township 114  
North, Range 44 West of the 5<sup>th</sup> Principal Meridian.

1871 The subject corner was established by L. Harrington. His notes state that he ran north on true line between Sections 14 & 15. At 40.00 Chains he set a post for the quarter section post and raised mound per instructions. At 80.00 chains he set post in mound with pits for Section Corner. (No ties taken).

Neither Mr. Harrington's monument nor accessories were found during our survey.

2009 Field Crew from Minnesota Department of Natural Resources (DNR) was unable to find any monument at this location. An excavation was not undertaken as this is an area of substantial fill due to the proximity of low land and there being no historic monuments in the record after the original survey. The corner was determined to be lost and was established midway and on line between the NE & SE corners of Section 15.

For more information concerning this survey contact Minnesota Department of Natural Resources.