

Office of County Recorder
Yellow Medicine County, Minnesota
I hereby certify that the within instrument
was filed on July 23, 2009 at 10:25 AM

N/C Daniel G. Nickols, PLS
Minnesota Dept. of Natural Resources
500 Lafayette Road
St. Paul, MN 55155-4037

Kay Zempel, Yellow Medicine County Recorder

Haidi J. Bakkefjord Deputy

Index No. L-13

CERTIFICATE OF LOCATION OF GOVERNMENT CORNER

EAST QUARTER Corner of Section 16, Township 114, Range 44

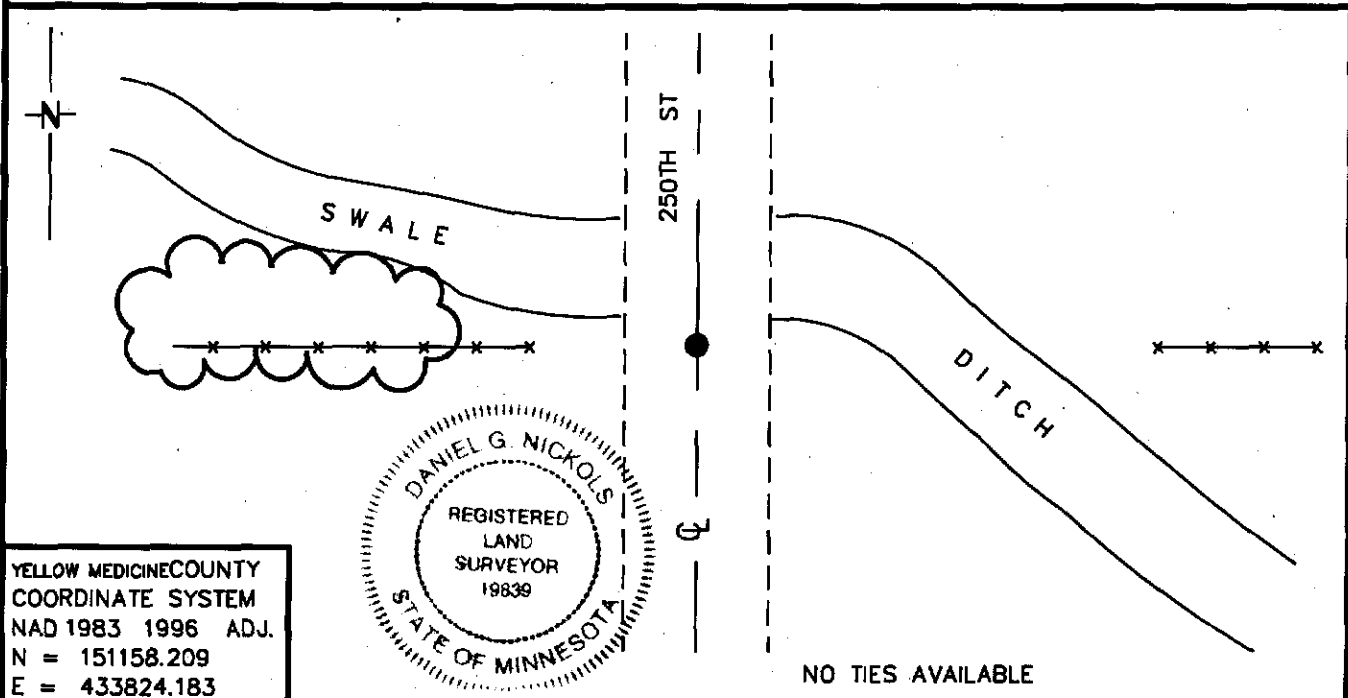
5 Principal Meridian, State of Minnesota, County of YELLOW MEDICINE

At the corner location shown on the sketch:

On _____ found a _____
DATE

left monument as found, lowered monument, removed monument (explain)

On 5/19/09 Placed a 3/4" X 12" REBAR WITH CAP STAMPED "MN DNR LS 19839"
DATE
SET FLUSH, MIDWAY AND ON LINE BETWEEN NE & SE CORNERS



Statement of evidence for this corner location is on back of this page.

07/08/09
WMA01797.00.00.01

I certify that this document was researched and prepared by me or under my direct supervision.

SIGNATURE Daniel G. Nickols DATE MARCH 25, 2009 License Number 19839

Title: Land Surveyor Professional Engineer County Surveyor County Engineer

Statement of Evidence for the East Quarter Corner of Section 16, Township 114
North, Range 44 West of the 5th Principal Meridian.

- 1871 The subject corner was established by L. Harrington. His notes state that he ran north on true line between Sections 15 & 16.
 At 0.50 Chains he intersected a dry creek, 5 links wide;
 At 40.00 Chains he set a post for ¼ Section Corner;
 At 41.00 Chains he intersected a dry creek, 5 links wide;
 At 60.00 Chains same creek;
 At 80.00 chains Set a post in raised mound for the corner to Sections 9, 10, 15 & 16. (No ties taken).

Neither Mr. Harrington's monument nor accessories were found during our survey.

- 2009 Field Crew from Minnesota Department of Natural Resources (DNR) was unable to find any monument at this location. An excavation was not undertaken as this is an area of substantial fill due to the proximity of low land and there being no historic monuments in the record after the original survey. The corner was determined to be lost and was established midway and on line between the NE & SE corners of Section 16.

For more information concerning this survey contact Minnesota Department of Natural Resources.